

GOVERNMENT CORNER RESTORATION FORM

Township 28 S Range 7 W Sec. 25 County DOUGLAS

State OR Date 12/5/83 No. _____

Corner Designation

$\frac{1}{4}$ S 25
S 36

- Condition Report Only
- Not Found
- Renewed
- Unrecorded
- Surveyed In
- Referenced Out

Previous Renewals # 105

MONUMENT DETAIL

Monument(s) Found: (Condition and Source)

1 1/2" IRON PIPE WITH BRASS CAP (REN #105)
PROTRUDING 13 1/2" ABOVE GROUND

COUNTY SURVEYORS OFFICE

$\frac{1}{4}$ S 25
S 36

T285 R7W

1958

Accessories Found:

- 1 ORIGINAL 20" W. OAK NOW 30" DIAM. HOLLOWED OUT TREE STUMP ALIVE
NO SCRIBING VISIBLE, BEARS N10°W, 26.4 FT.
- 2 ORIGINAL 18" B. OAK NOW A DEPRESSION IN THE GROUND, NO REMAINS OF BT,
BEARS S42°W, 57.4 FT.
- 3 16" NOW 12" DIAM. FIR STUMP 4 1/2 FT HIGH, WITH WELL HEALED DOUBLE BLAZE,
BEARS N82°E, 38.1 FT (REC 3716) PER REN #105.
- 4 8" W. OAK NOW 9" DIAM. WITH WELL HEALED DOUBLE BLAZE
BEARS S81°W, 6.0 FT. PER REN #105.

#247 X

G. S. Title Co. 62/9-10
C

RENEWAL

Monument Set (Procedure and Description)

Monument Detail

NONE

New Accessories

10" B. OAK DOUBLE BLAZED AND SCRIBED "1/4 S 36 CS BT" B
BEARS S59°E, 44.5 FT.

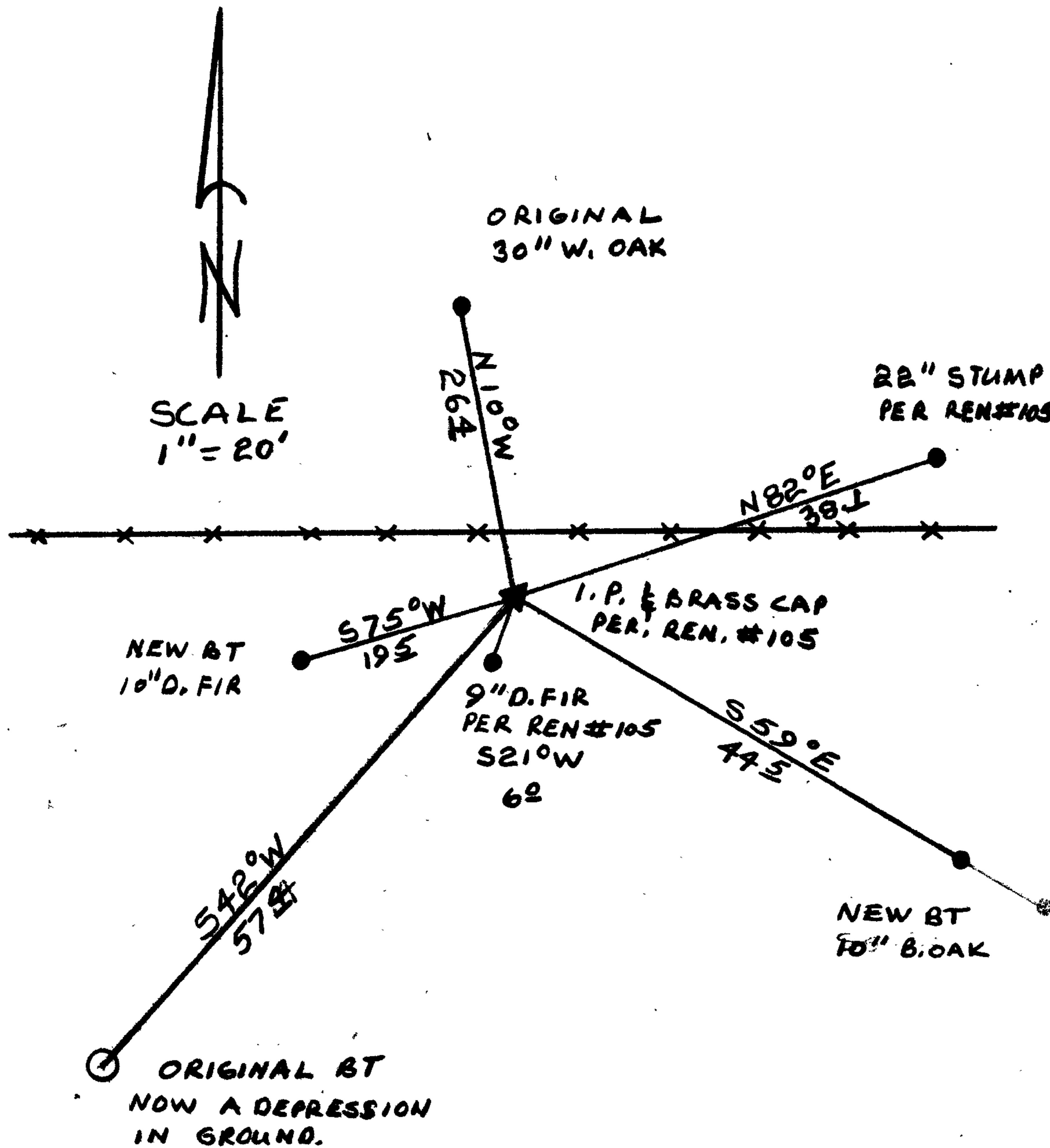
10" D. FIR DOUBLE BLAZED AND SCRIBED "1/4 S 36 CS BT"
BEARS S75°W, 19.5 FT.

Sketch of Monument, Accessories, and General Area

Location & Comments

THIS CORNER LIES 5 FT SOUTH
OF A EAST, WEST FENCELINE,
ON A SMALL ^{KNOLL} APPROX.
1000 FT SOUTH OF STATE
HWY 42.

Comp. Declin. 19° EAST
 Agency DCSO
 Party Chief RANDALL W. SMITH
 Notekeeper Randall W. Smith
 Witnesses P. L. BAIR



Surveyor's Seal
 REGISTERED
 PROFESSIONAL
 LAND SURVEYOR

Larry E. Monrean

OREGON
 JULY 13, 1979
 LARRY E. MONREAN
 #1830