

GOVERNMENT CORNER RESTORATION FORM

Township 24S Range 1W Sec. 28 County DOUGLAS

State OR Date 9-28-83 No. \_\_\_\_\_

Corner Designation

29	28
32	33

- \_\_\_\_\_ Condition Report Only
- \_\_\_\_\_ Not Found
- Renewed
- \_\_\_\_\_ Unrecorded
- \_\_\_\_\_ Surveyed In
- \_\_\_\_\_ Referenced Out

Previous Renewals #2, #106 104

MONUMENT DETAIL

Monument(s) Found: (Condition and Source)

NO TRACE OF COUNTY CAP (#2)

NO TRACE OF 3/4" I.R. (#106)  
104

Accessories Found:

FD. ORIG 6" DIAM. PINE (NOW 18" STUMP WITH THE LOWER PORTION OF BYRON'S RESCRIPTING VISIBLE) (REC. S28 1/2° E 25 IKS)

ORIG. 6" DIAM. PINE (REC. N39° W 44 IKS) FALLS IN ROADBED - GONE

ORIG. 6" DIAM. PINE (REC. S42 1/2° W 15 IKS) - GONE

ORIG 14" DIAM. PINE (REC N60° E 32 IKS) - GONE, DOWN AND ACROSS ROAD.

BYRON'S 15" DIAM. PINE (REC. S5A° W 27.9 FT) LYING DEAD ON EDGE OF BANK

FD 1970 COUNTY SURVEYOR'S B.C. FOR WITNESS CORNER MARKED

T24S  
32E  
332  
60 FT. E  
1370

BEARS S89° W 60.0 FT FROM CORNER (RECORD WEST 60.0 FT)

FD 10" PINE (NOW SNAG) BEARS N76° W 14.5 FT (15.3 FT) FROM W.C.

FD 11" D. FIR (NOW SNAG) BEARS N38 1/2° E 31.3 FT (31.4 FT) FROM W.C.

#144

RENEWAL

Monument Set (Procedure and Description)

Monument Detail

USING FD ORIG 6" PINE (NOW 18" STUMP)  
WE PULL RECORD S28 1/2° E 16.5 FEET  
AND SET BRASS CAP IN DRILL HOLE FLUSH WITH  
ROCK ON A STEEP CUT BANK, MATERIAL  
WILL SLOUGH OFF BANK AND COVER  
CAP.

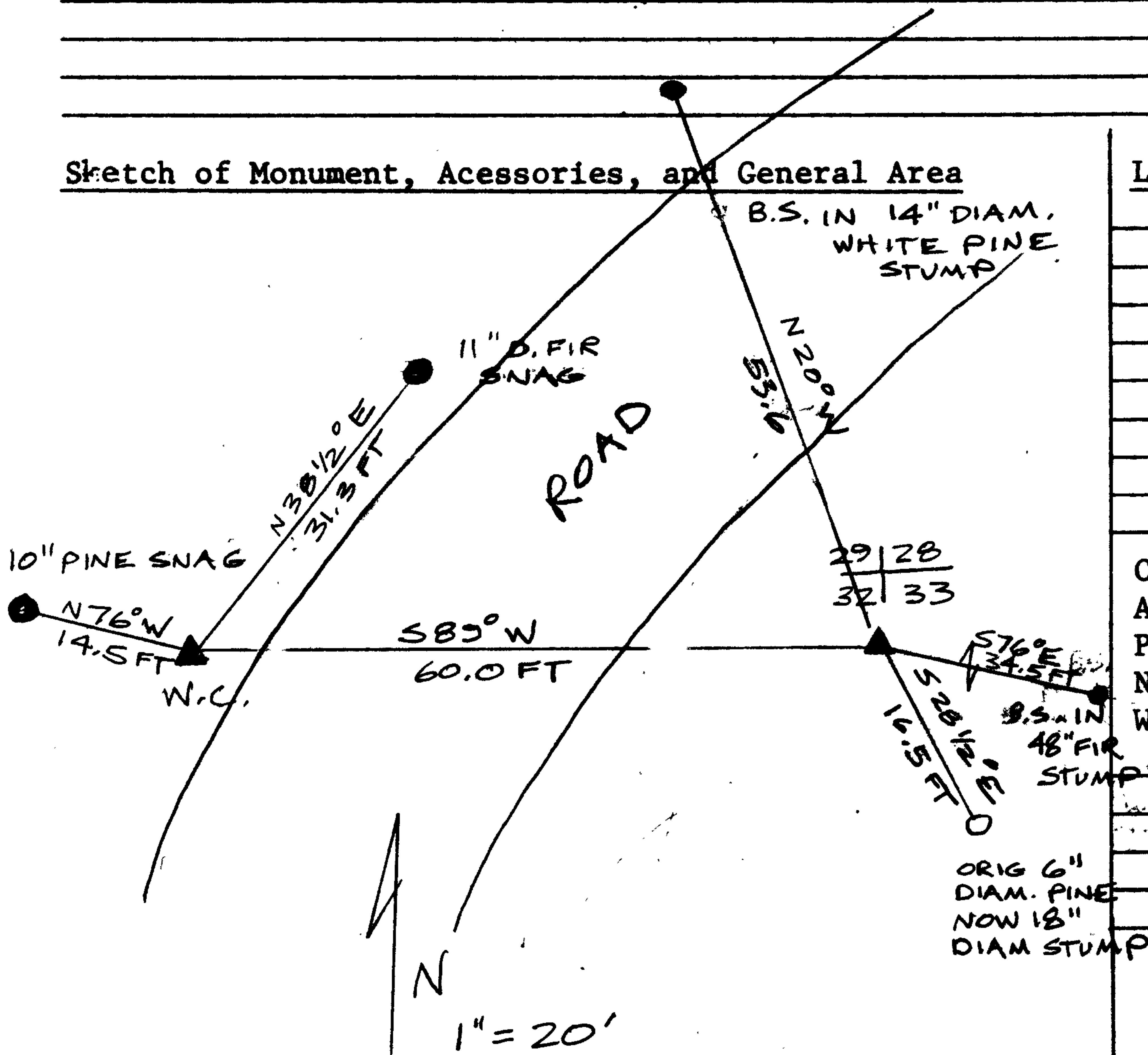
COUNTY SURVEYORS OFFICE  
29 | 28  
32 | 33  
T245 P983  
RIW

BLM NOTIFIED US IN 9/83 THAT THEY  
DISAGREE WITH THE RECORD BEARING  
FROM THE CORNER TO THE W.C.  
WE FIND THAT THE W.C. IS S89° W  
60.0 FT FROM CORNER

New Accessories

B.SPIKE IN 48" DIAM FIR STUMP BEARS S76° E 34.5 FT  
B.SPIKE IN 14" DIAM WHITE PINE STUMP BEARS N20° W 53.6 FT.

Sketch of Monument, Accessories, and General Area



Location & Comments

Comp. Declin. 19° E  
Agency DCSO  
Party Chief L. E. MONREAN  
Notekeeper J. LUNDEEN  
Witnesses J. POWELL

REGISTERED SURVEYOR'S Seal  
PROFESSIONAL  
LAND SURVEYOR

*Janet R. Lundeen*

OREGON  
FEBRUARY 4, 1983  
JANET R. LUNDEEN  
2032