

GOVERNMENT CORNER RESTORATION FORM

Township 26 S Range 4 W Sec. 13 County DOUGLAS

State OR Date 5-12-83 No. \_\_\_\_\_

Corner Designation

T 26 S  
INT. L  
DLC. 43  
R 4 W

- \_\_\_\_\_ Condition Report Only
- \_\_\_\_\_ Not Found
- Renewed
- \_\_\_\_\_ Unrecorded
- \_\_\_\_\_ Surveyed In
- \_\_\_\_\_ Referenced Out

Previous Renewals # 8 # 104

MONUMENT DETAIL

Monument(s) Found: (Condition and Source)

FD. BRASS CAP PER REN. #104  
LYING ALONGSIDE GRAVEL ROAD  
WITH PIPE BADLY BENT.

COUNTY SURVEYORS OFFICE  
T 26 S

INT. L  
DLC 43

R 4 W

1971

Accessories Found:

FD. 14" FIR PER REN. # 8 ; NOW 30" STUMP WITH  
SCRIED "T" VISIBLE IN OPENED BLAZE.

FD. 36" B. OAK PER REN. #104 , NOW 38" WITH  
HEALED OVER BLAZE.

#1214

62/7-50

RENEWAL

Monument Set (Procedure and Description)

Monument Detail

I SET A 1"x30" IP WITH BRASS CAP ATTACHED AT RECORD BEARING 401.8 FT. FROM THE TWO REMAINING BT'S.

BRASS CAP PROTRUDES 12" ABOVE GROUND ALONG WEST EDGE OF ONE LANE GRAVEL ROAD. I PLACE FENCE POST & WITNESS SIGN ONE FOOT WEST OF CORNER.

BEARINGS & DIST'S USED TO SET CAP ARE:

FROM 30" FIR STUMP S 48 1/2° W 48.0 FT.

FROM 38" OAK S 1° W 185.1 FT.

DOUGLAS CO. SURVEYOR  
T265

INT. L  
DLC. 43

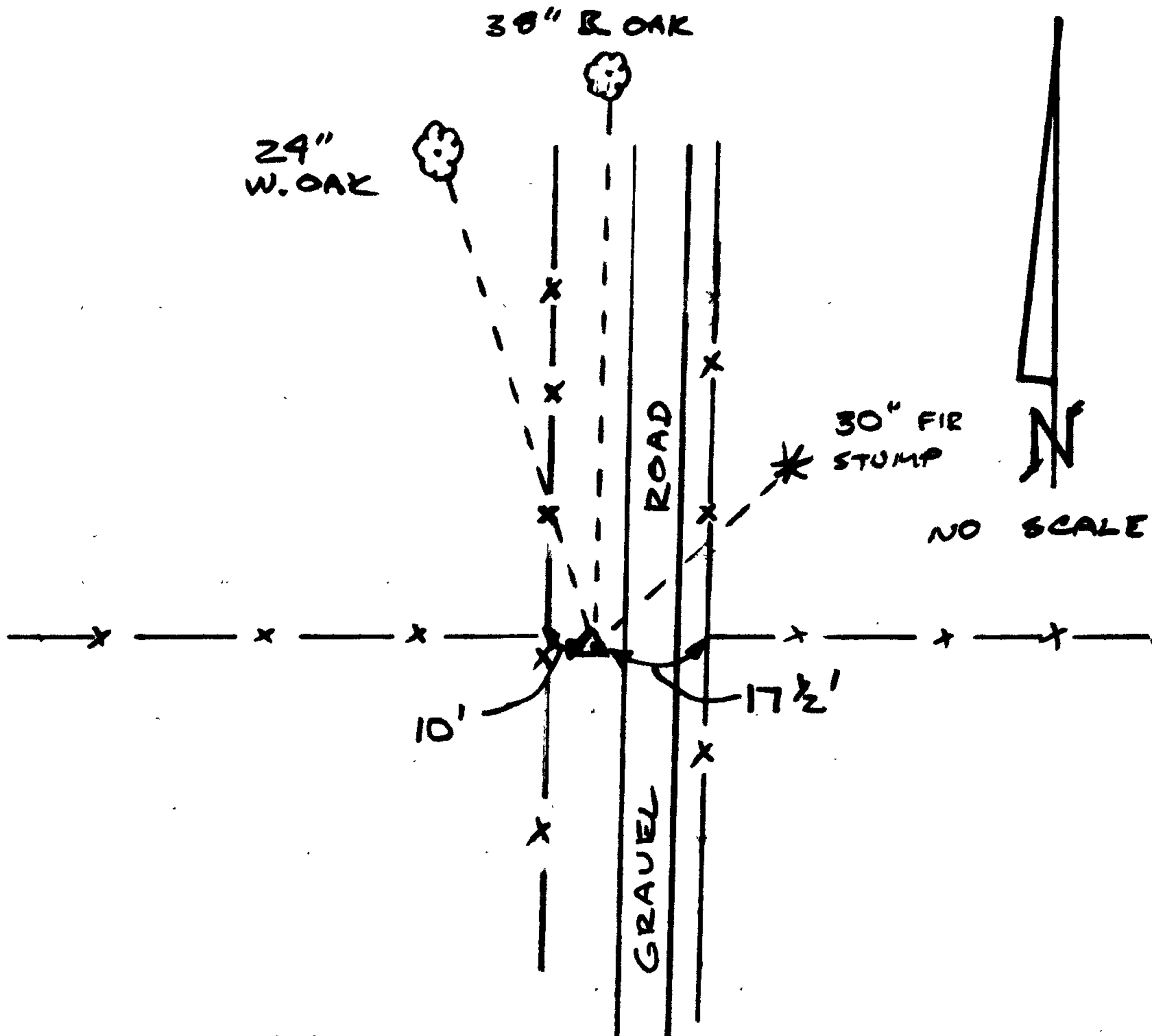
RAW

1983

New Accessories

24" W. OAK SCRIBED "INT L DLC 43 CS BT" IN DOUBLE BLAZE BEARS N 18° W 179.8 FT.

Sketch of Monument, Accessories, and General Area



Location & Comments

Comp. Declin. 19° E

Agency DCSD

Party Chief GREGORY E. QUIBELL

Notekeeper "

Witnesses JOHN POWELL

Surveyor's Seal

REGISTERED  
PROFESSIONAL  
LAND SURVEYOR

*Gregory E. Quibell*

OREGON  
JULY 13, 1979  
GREGORY E. QUIBELL  
1834