

PROPERTY SURVEY

TRACT LOCATED IN SEC. 36, T.22S., R.9 W.W.M. DOUGLAS COUNTY, OREGON.

PRELIMINARY

PRELIMINARY

PRELIMINARY

1/4 COR. FO. BRASS CAP & B.T.'S
30" FIR N 8° E ~ 13.2'
34" FIR S 2° W ~ 47.5'
34" FIR N 58° E ~ 37.8'
6" D. FIR N 58° E ~ 37.8'
(TREES NOW LARDED)

ORIG. DIST. 80.77 CHAINS
PROP. DIST. FROM EAST
COR. OFF 25 FT
SHOWS OF TRUE POSITION
WEST DON'T FIND OTHER
IF YOU EVIDENCE AT TRAGED
TREE.

FOR: INTERNATIONAL PAPER COMPANY
SURVEY PERFORMED AT REQUEST OF INTERNATIONAL
PAPER CO. TO LOCATE & POST PROPERTY LINE.

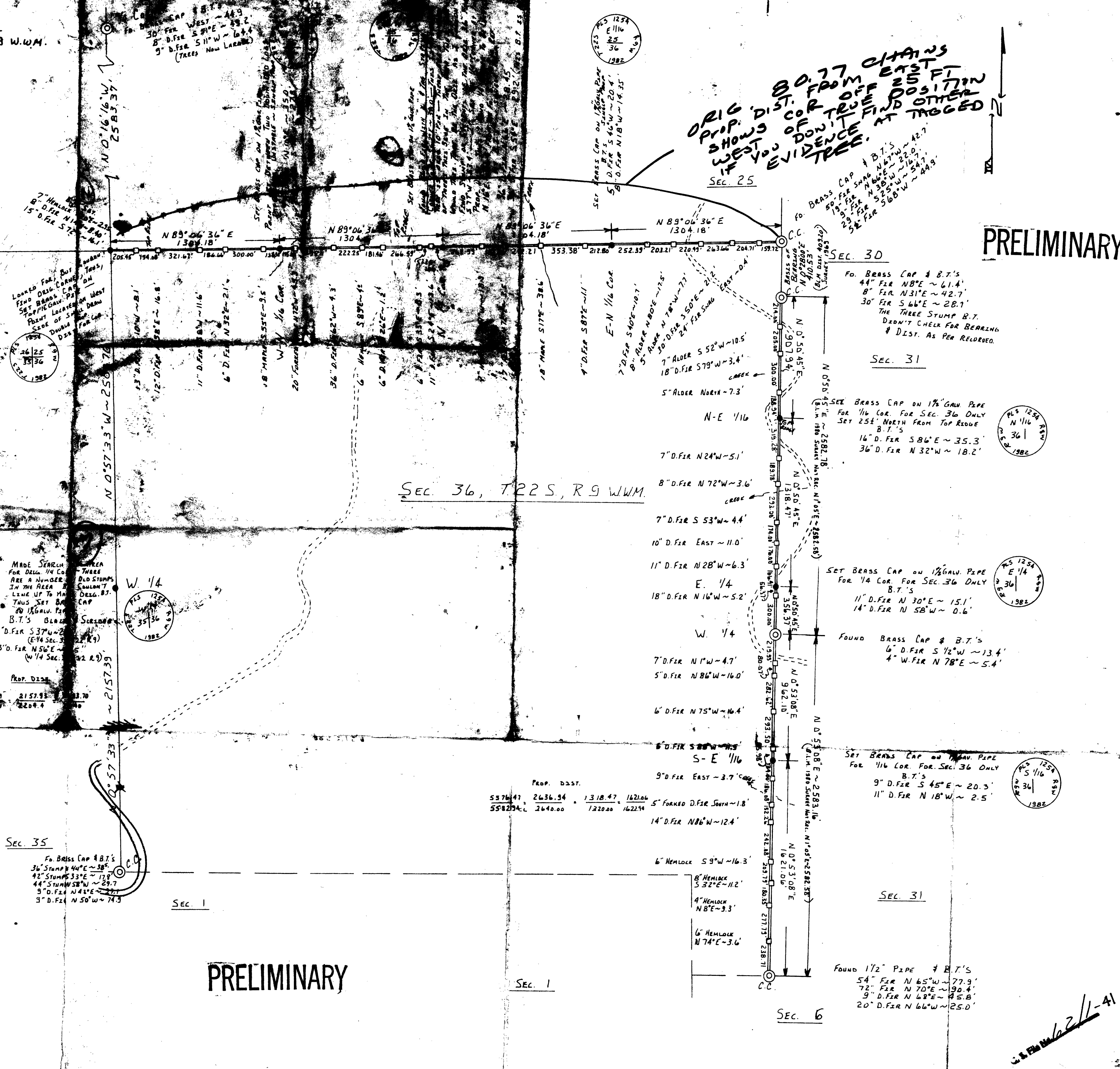
LEGEND
MONUMENT FOUND (circle with dot)
MONUMENT SET (circle with dot)
LINE STAKES (square)
LINE BLAZED & FLAGGED (dashed line)
BASIS OF BEARING FROM SURVEY BY
U. S. DEPT. OF INT. - B. L. M. DATED
JULY 25, 1963.
REQUESTED & RECEIVED NOTES & MAPS FROM
DOUGLAS COUNTY SURVEYORS OFFICE & B.L.M.
OFFICE IN COOS BAY, OREGON.
LOCATED FOUND POINTS IN FIELD
USED THEODOLITE & F.D.M. TO TIE CORNERS
RAN RANDOM LINE EXCEPT ALONG LINE TO
BE FLAGGED.
CALC. LOCATION FOR CORNERS & TIE LINE
SET POINTS BLAZED & FLAGGED
SET CORNER LOCATION ON MAP FOR
MORE INFORMATION ON CORNERS

WORK DONE BY: LUCKMAN ENGINEERING & SURVEYING
Rt. No. 1 Box 565
COQUILLE ORE.

Scale: 1" = 500'
Date: Nov. 30, 1982

REGISTERED
PROFESSIONAL
LAND SURVEYOR

ROCKY R. LUCKMAN
OREGON
SEPT. 1977
1254



PROP. DIST.

4741.09	2157.93	13.70
1844.40	2209.4	

PROP. DIST.

5576.41	2636.34	1318.47	1621.06
5582.94	2640.00	1220.00	1622.94

PLS 1254
E 1/16
36
1982

PLS 1254
E 1/4
36
1982

PLS 1254
S 1/16
36
1982

C. B. F. No. 6211-41