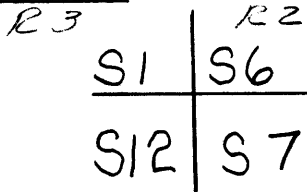


GOVERNMENT CORNER RESTORATION FORM

Township 24S Range 2W Sec. 6 County DOUGLAS

State OREGON Date 12/16/82 No. _____

Corner Designation

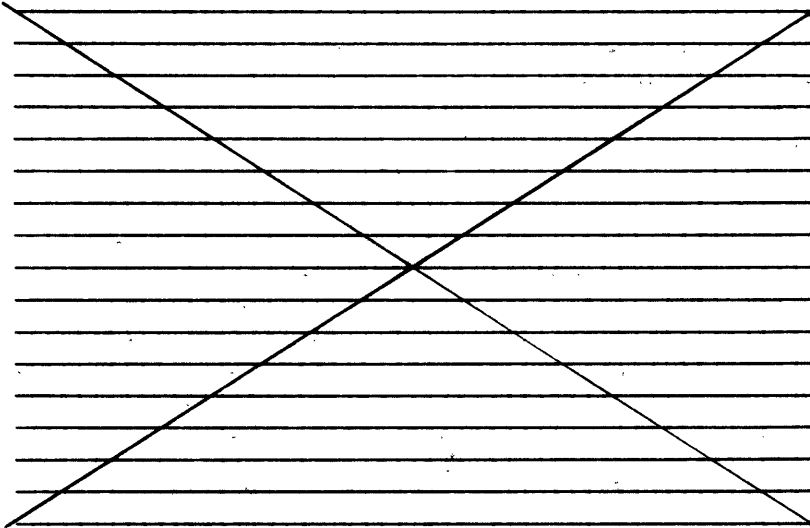


- Condition Report Only
- Not Found
- Renewed
- Unrecorded
- Surveyed In
- Referenced Out

Previous Renewals 1972 WEYERHAEUSER RENEWAL

MONUMENT DETAIL

Monument(s) Found: (Condition and Source)



Accessories Found:

FOUND ORIGINAL 24" HEMLOCK, NOW 28" 7 FOOT HIGH STUMP WITH
SCRIBED T@S, (R)W, S12, (S)T VISIBLE IN PREVIOUSLY
OPENED BLAZE

FOUND 40" FIR STUMP WITH "W" NAIL IN FACE PER WEY. CO.
RENEWAL

93 T24-3 ✓
114 T24-2 ✓

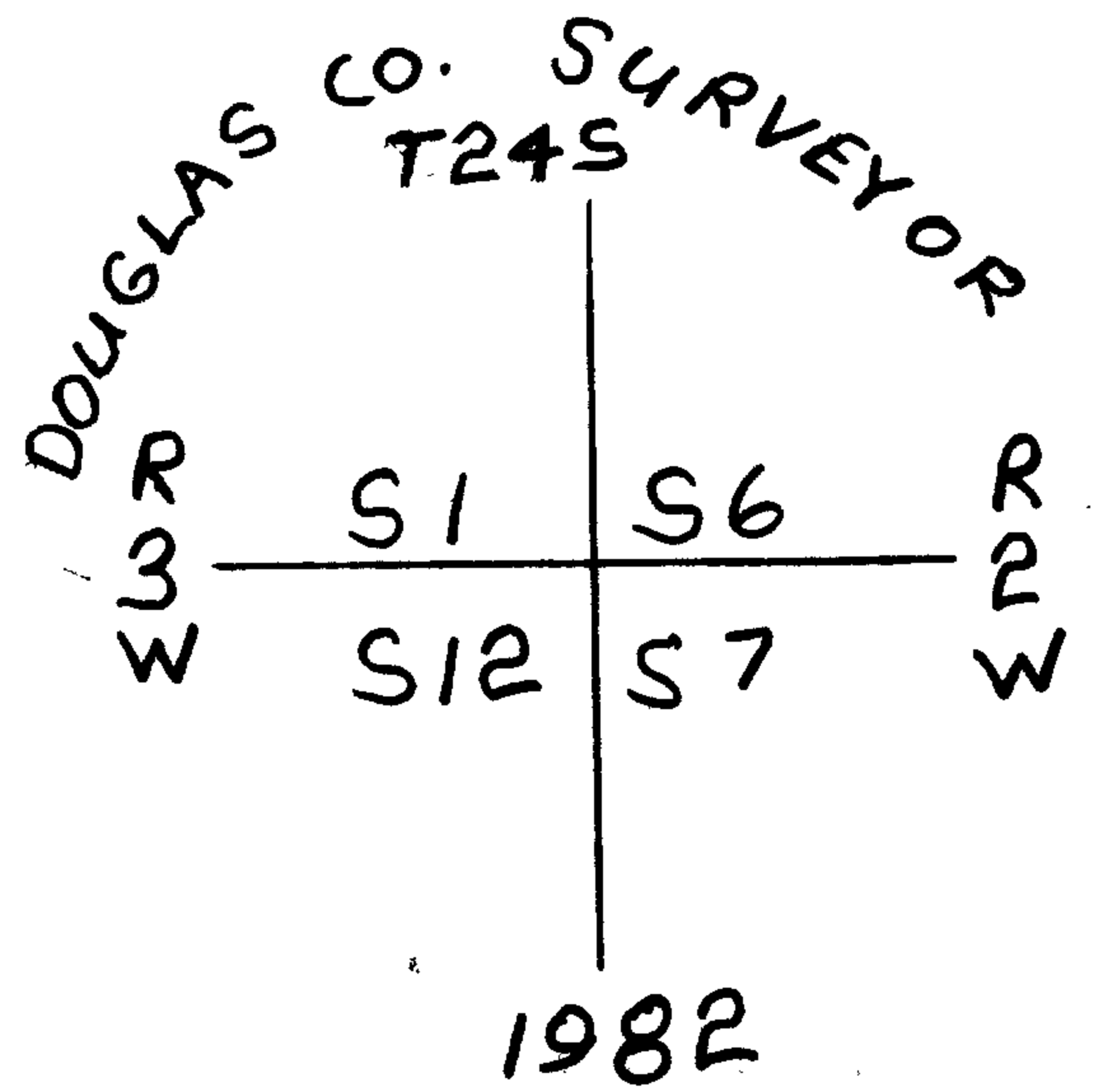
File No. 62/1-36 C

RENEWAL

Monument Set (Procedure and Description)

SET 1" X 30" L.P. WITH BRASS CAP
 ATTACHED IT RECORD BRG. AND DIST.
 (N25°E, 205') FROM ORIGINAL HEMLOCK BT

Monument Detail



New Accessories

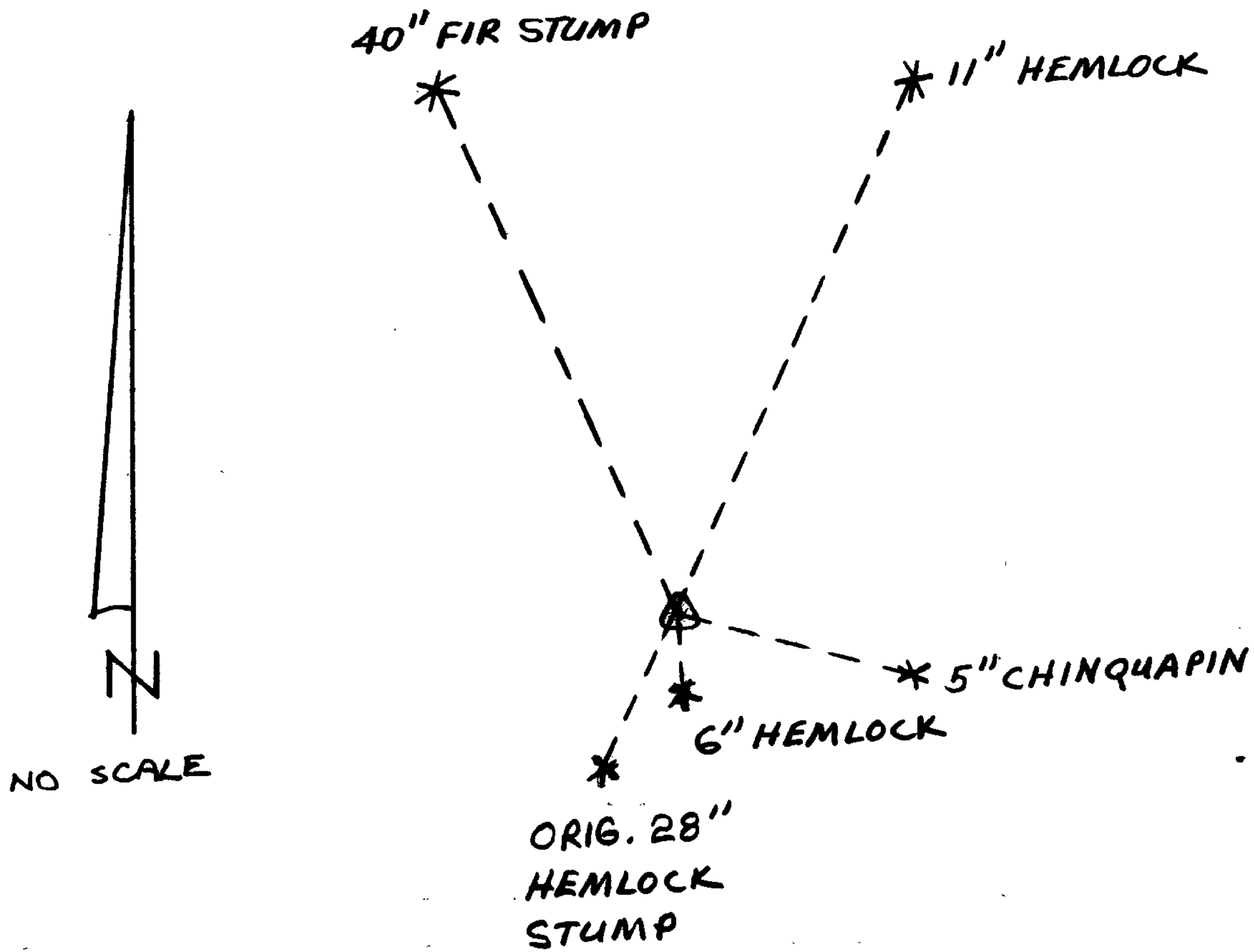
40" FIR STUMP BEARS N24W 47² FT. TO "W" NAIL (ON FACE)

6" HEMLOCK SCRIBED "S12 CS BT" IN DOUBLE BLAZE BEARS S2°E 11²'

11" HEMLOCK SCRIBED "S6 CS BT" IN DOUBLE BLAZE BEARS N25°E 47³'

5" CHINQUAPIN SCRIBED "S7 CS BT" IN DOUBLE BLAZE BEARS S74°E 25²

Sketch of Monument, Accessories, and General Area



Location & Comments

DCSO BT TAGS ON ALL TREES

END OF ROAD 711 AND LINE
 CROSSING TAG BEARS N20°E
 APROX. 600' FROM CORNER

Comp. Declin. 19°E

Agency DCSO

Party Chief GREG E. QUIBELL

Notekeeper Randy Smith

Witnesses JOHN POWELL

Surveyor's Seal *open*

**REGISTERED
 PROFESSIONAL
 LAND SURVEYOR**

Gregory E. Quibell

OREGON
 JULY 13, 1979
 GREGORY E. QUIBELL
 1834

RENEWAL

Monument Set (Procedure and Description)

~~Empty lined area for Monument Set (Procedure and Description)~~

Monument Detail

New Accessories

~~Empty lined area for New Accessories~~

Sketch of Monument, Accessories, and General Area

Location & Comments

~~Empty lined area for Location & Comments~~

Comp. Declin. _____

Agency DCSO

Party Chief GREGORY E. QUIBELL

Notekeeper GREGORY E. QUIBELL

Witnesses KAREN REED

TERRIE PLOUFF

Surveyor's Seal

REGISTERED
PROFESSIONAL
LAND SURVEYOR

Gregory E. Quibell

OREGON
JULY 13, 1979
GREGORY E. QUIBELL
1834

GOVERNMENT CORNER RESTORATION FORM

Township 24S Range 3W Sec. 1 County DOUGLAS

State OR Date 10-21-82 No. _____

Corner Designation

T 24S

R	1 6	R
3	12 7	2
W		W

- Condition Report Only
- Not Found
- Renewed
- Unrecorded
- Surveyed In
- Referenced Out

Previous Renewals UNRECORDED WEYERHAEUSER REN

Monument(s) Found: (Condition and Source)

(ATTACHED)

MONUMENT DETAIL

NOTHING FOUND

Accessories Found:

NOTHING FOUND

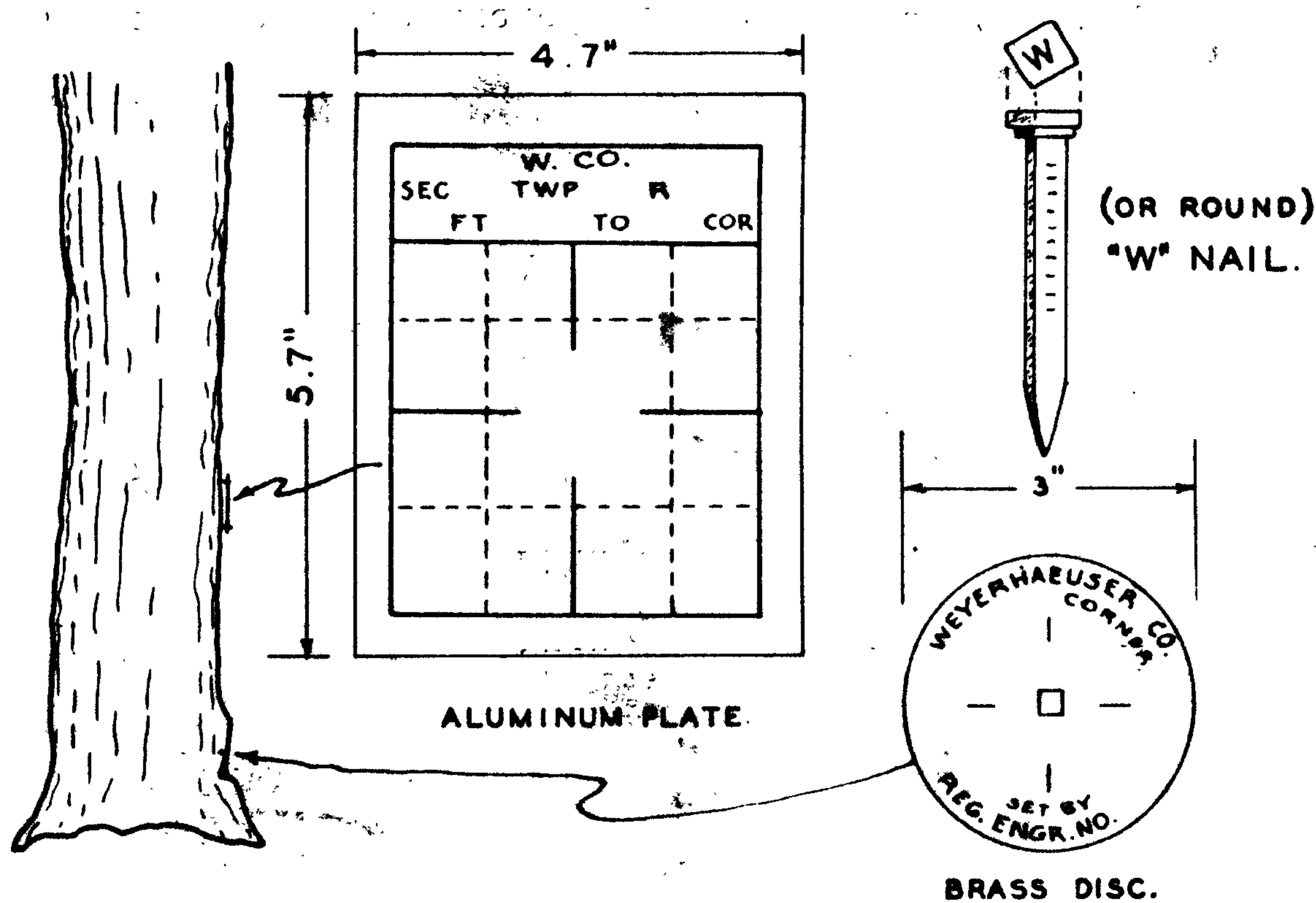
36	31	32	33	34	35	36	31
1	6	5	4	3	2	1	6
12	7	8	9	10	11	12	7
13	18	17	16	15	14	13	18
24	19	20	21	22	23	24	19
25	30	29	28	27	26	25	30
36	31	32	33	34	35	36	31
1	6	5	4	3	2	1	6

WEYERHAEUSER COMPANY

CORNER REFERENCE METHOD CONSISTS OF:

A "W" NAIL DRIVEN THRU THE HOLE IN A BRASS DISC, INTO A NOTCH CUT LOW ON A TREE, STAMPED WITH THE OREGON REGISTERED LAND SURVEYOR OR PROFESSIONAL ENGINEER REGISTRATION NUMBER.

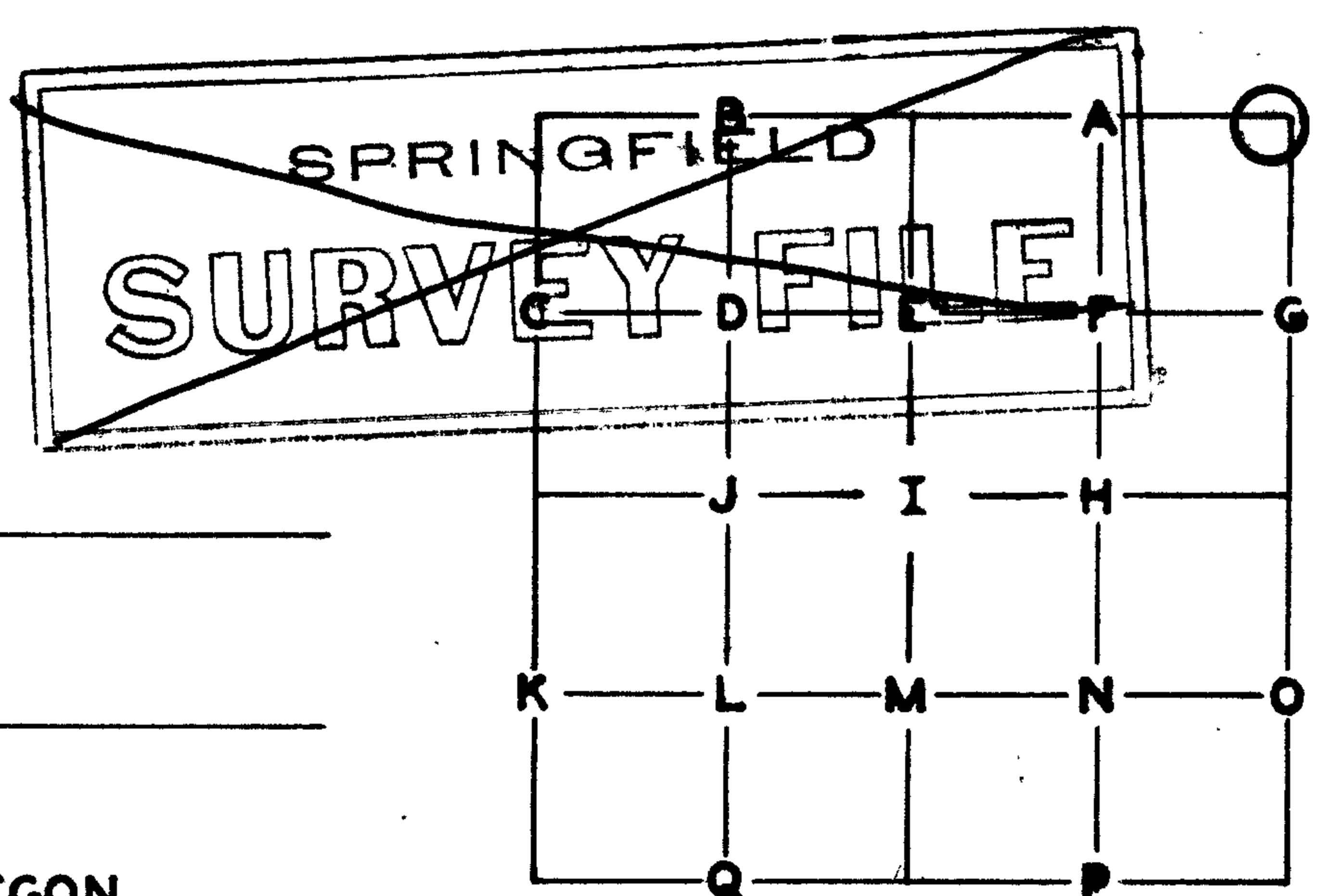
AN EMBOSSED ALUMINUM PLATE, NAILED HEAD HIGH ON SAME TREE WITH 8D ALUMINUM NAILS, WITH DISTANCE AND BEARING FROM THE "W" NAIL TO THE CORNER STAMPED ON IT.



FORM 771 1/69

PUBLIC LAND CORNERS

WEYERHAEUSER COMPANY
SPRINGFIELD BRANCH



TOWNSHIP 24S RANGE 3W
SECTION 12 CORNER NE
COUNTY Douglas OREGON

GLO SURVEY RECORD

DATE: 1871
CORNER 4' x 4" x 4" yew post

PRESENT CONDITION - (DESCRIBE FULLY - USE PAGE 2 IF NEEDED FOR EXPLANATION.)

Gone

ACCESSORIES:

	BEARING-	LINKS-	FEET-	
7" Maple	N71E	20	13.2	Lost to logging
12" Yew	S55E	70	46.2	Found Yew uproot - open face, no scribing
24" Hemlock	S25W	31	20.5	32" Hemlock stump - scribing visible
18" Yew	N60W	13	8.6	Lost to logging

SURVEY RECORD
DATE: _____

PRESENT CONDITION: _____

CORNER SET: 24" x 2" square Yew post

MAG. DECL.: 20°E

BEARING AND DISTANCE TO ABOVE IDENTIFIED SURVEY ACCESSORIES:

BEARING-	FEET-	SURVEY -	
S25W	20.5	1871	Center of stump measurement
S55E	46.0	1871	Center of uproot hole

G. & E. File No. 6211-36

SEAL 62/1-36

WORK DONE FOR W. CO. _____

FIELD NOTES IN BOOK: _____

UNDER THE SUPERVISION OF: _____

BY: Ken Perkins
 DATE: 17 January 1972

ASSISTED BY: Len Wilson

COPIES SENT TO: _____

FROM CORNER -

NORTH:	-42%	50° then steeper
SOUTH:	+25%	100° to ridge top
EAST:	+35%	150° then descend
WEST:	-30%	200° then steeper

SLOPE FACES (GIVE BEARING IN DEGREES) ON MINUS (-) % 45

(USING FORM LINES SKETCH TOPOG AT CORNER ON PAGE 2 PLAT)

GROUND COVER: Logged over - scattered Hemlock 10' - 12' high

INFORMATION ON LOCATION OF CORNER AS NOW SET:

IDENTIFIED ON PHOTO:

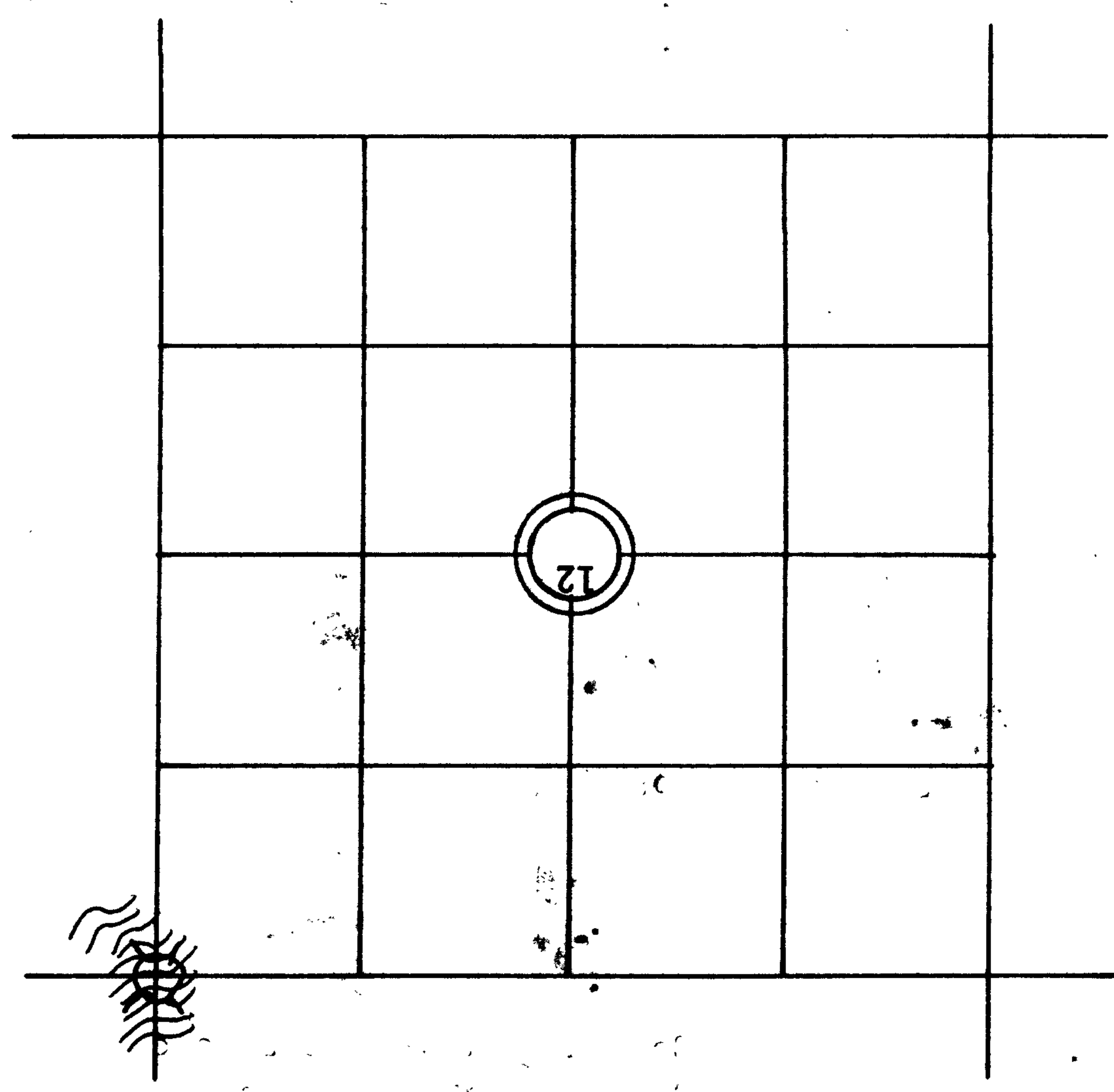
BEAR	FEET	ORIG. B.T.	"W" NAIL	PLATE	BRASS DISC
S26W	18.9	X	X	X	X
N24W	47.0	-	X	X	X

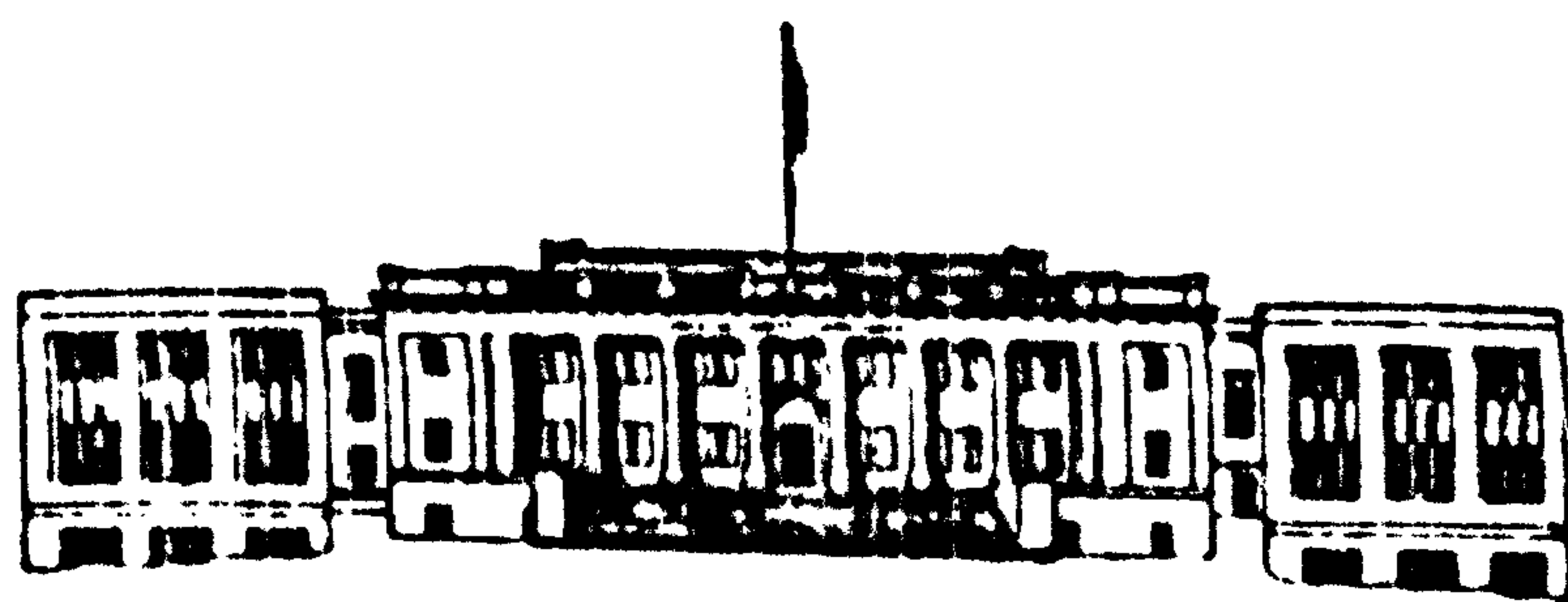
ACCESSORIES ADDED THIS DATE:

MAGNETIC DECLINATION 20° E

○ KNOWN CORNER
 ○ REFERENCED CORNER BY WEYERHAEUSER METHOD

LINE MARKED BY NOTCH CUT IN BLAZE





COUNTY OF DOUGLAS
OFFICE OF THE SURVEYOR
ROSEBURG, OREGON 97470

November 2, 1978

GET KEY

NE
12/24/3

Weyerhaeuser Company
Springfield Branch
Land Surveys Division
785 N. 42nd Street
Springfield, OR 97477

Attention: Ken Perkins

Dear Mr. Perkins:

Enclosed are copies of field work done in 1972 concerning a survey corner on Weyerhaeuser land which is in need of permanent monumentation. Survey crews from this office have searched for this corner and to date have been unable to locate it.

We would appreciate any assistance you may give us in the form of maps, aerial photo copies or written information that will enable us to find this corner location.

Sincerely yours,

Gary L. Langlitz
Field Deputy
Douglas County Surveyor's Office

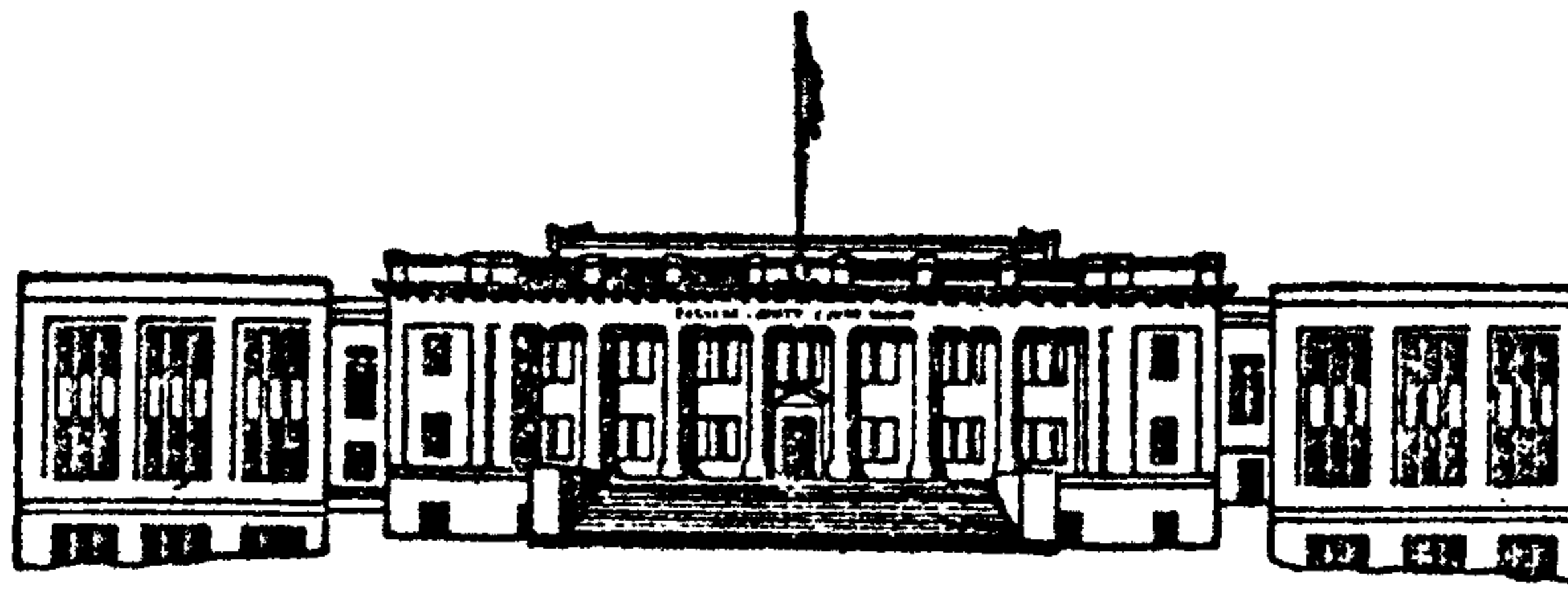
KR/gl

encl.

Ken, Has this letter supplied
by? The corner is the NE of section

12 T 24S R3W

C.S. File No. 12/1-36



COUNTY OF DOUGLAS
OFFICE OF THE SURVEYOR
ROSEBURG, OREGON 97470

September 7, 1976

12-24-3

*waiting
for review
8-27-78
Steve*

Weyerhaeuser Company
Springfield Branch
Land Surveys Division
785 N. 42nd Street
Springfield, OR 97477

Attention: Ken Perkins

Dear Mr. Perkins:

Enclosed are copies of field work done in 1972 concerning a survey corner on Weyerhaeuser land which is in need of permanent monumentation. Survey crews from this office have searched for this corner and to date have been unable to locate it.

We would appreciate any assistance you may give us in the form of maps, aerial photo copies or written information that will enable us to find this corner location.

Sincerely yours,

Gary L. Langlitz
Field Deputy
Douglas County Surveyor's Office

GL/gt

encl.

J. S. File No. 6211-36