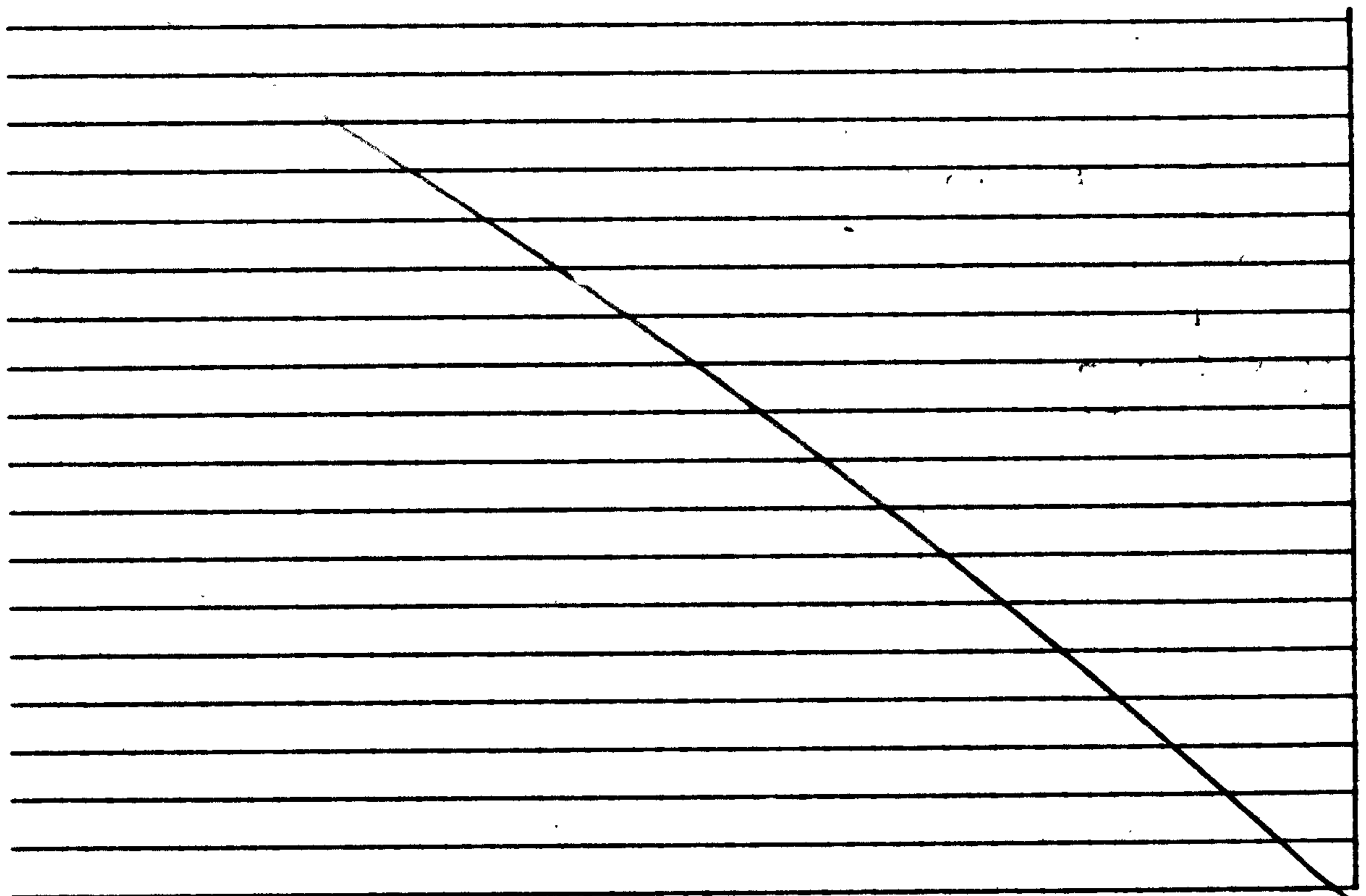




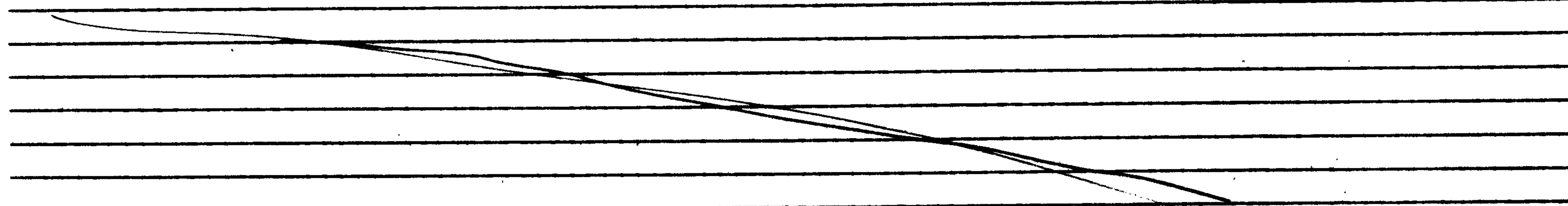
RENEWAL

Monument Set (Procedure and Description)

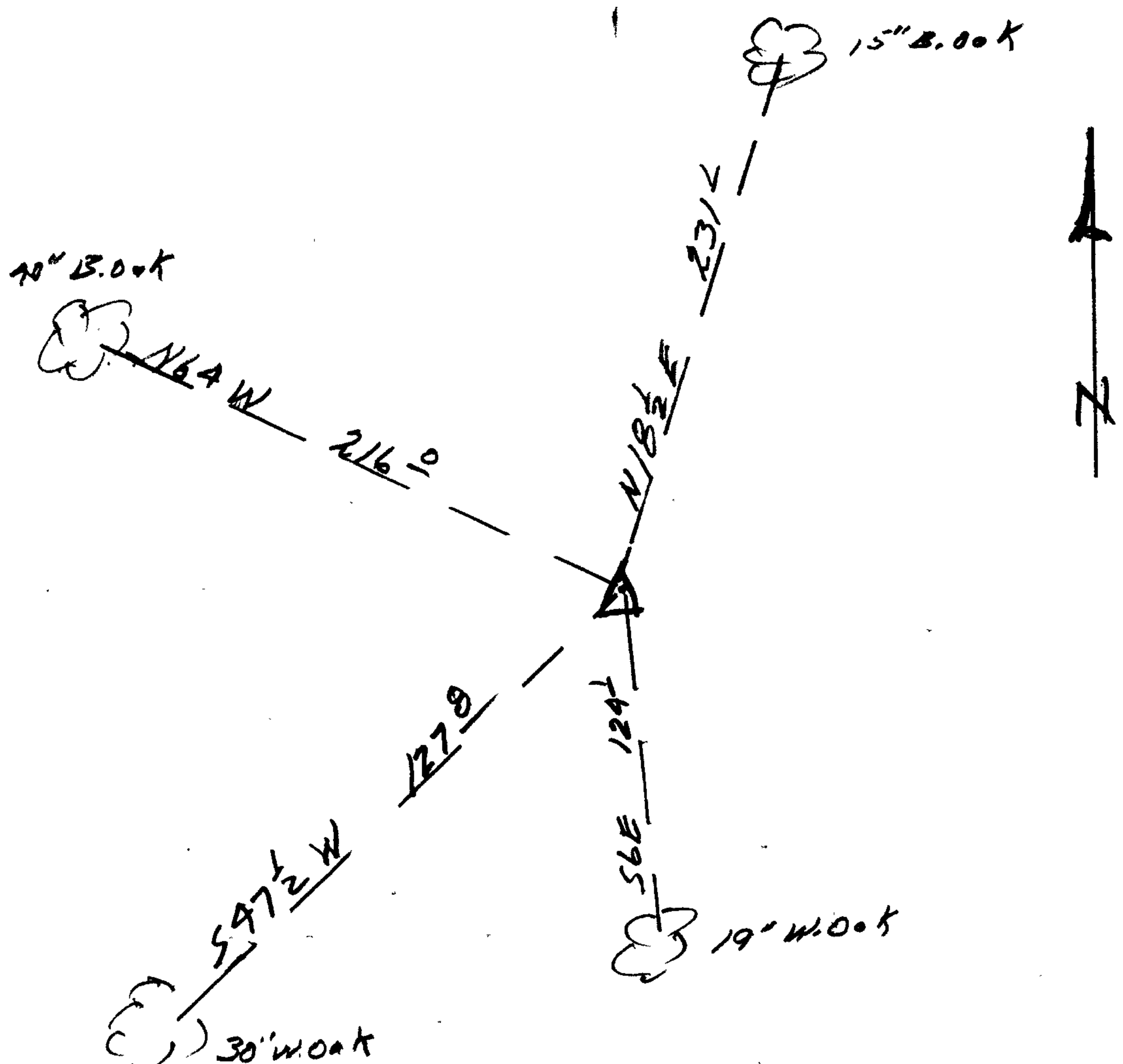
Monument Detail



New Accessories



Sketch of Monument, Accessories, and General Area



Location & Comments

This cor. lies in field approx 200 ft northerly from Little River Rd.  
 Cor. checked to be sure it is safe from construction work

Comp. Declin. 19° East  
 Agency DCSD  
 Party Chief J  
 Notekeeper J  
 Witnesses RS

Surveyor's Seal

REGISTERED  
 PROFESSIONAL  
 LAND SURVEYOR

*Larry E. Monrean*  
 OREGON  
 JULY 13, 1979  
 LARRY E. MONREAN  
 #1830