

GOVERNMENT CORNER RESTORATION FORM

Township 22 S Range 12 W Sec. 8 County DOUGLAS

State OREGON Date 10-18-82 No. \_\_\_\_\_

Corner Designation

T 22 S R 12 W

S 8	S 9
S 17	S 16

- Condition Report Only
- Not Found
- Renewed
- Unrecorded
- Surveyed In
- Referenced Out

Previous Renewals NONE

Monument(s) Found: (Condition and Source)

ORIGINAL (1857 4x4 WOOD POST) NOT FOUND

MONUMENT DETAIL

Accessories Found:

1. A 30 INCH SPRUCE NOW A 36" DIA DECAYED STUMP BEARING N 7° E 47<sup>2</sup> FEET. WE REMOVE PITCH XO FROM A PREVIOUSLY OPENED BLAZE AND FIND FAINT SCRIBING " T R 12 " THE FIGURES R 12 BEING THE MOST LEGIBLE.

AT RECORD BEARING AND DISTANCE WL (S 7° W 47<sup>5</sup> FEET) FROM THE FOUND EVIDENCE WE SET A TEMPORARY POINT AND SEARCH FOR THE REMAINING B.T. EVIDENCE AS FOLLOWS.

2. A 30 INCH SPRUCE BEARING S 73° W 18<sup>5</sup> FEET, WE FIND ROTATED REMAINS OF A SPRUCE SIZE INDETERMINATE BEARS S 76° W 18<sup>0</sup> FEET. NO BLAZE OR SCRIBING FOUND.

3. A SPRUCE 18 INCH DIAM. BEARING N 70° W 50<sup>2</sup> FEET, WE FIND A BADLY DECAYED STUMP, SIZE INDETERMINATE BEARS N 70° W 45.5 FEET. NO BLAZE OR SCRIBING FOUND.

4. WE FOUND NO SIGN OF THE 5 INCH DIAM SPRUCE AT S 79° E 25<sup>1</sup> FEET

#1702

G. & E. N. 62/11-25 C

RENEWAL

Monument Set (Procedure and Description)

AT THE TEMPORARY POINT NOTED AT RECORD BEARING AND DISTANCE FROM THE FOUND NE BEARING TREE STUMP WE SET A 1" X 30" IRON PIPE WITH A BRASS CAP ATTACHED AND STAMPED AS NOTED. MONUMENT PROTRUDES 10" ABOVE GROUND.

Monument Detail

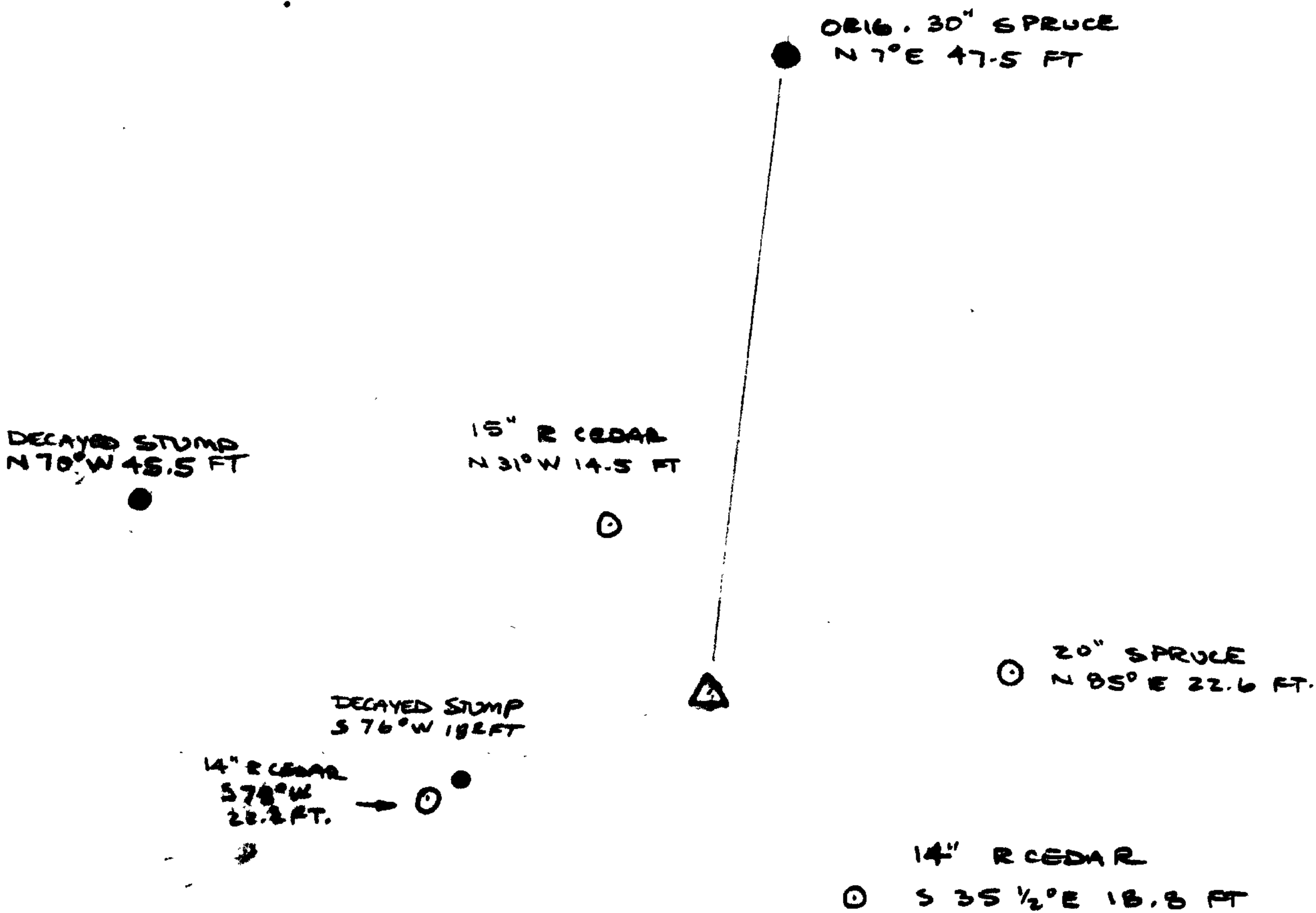
DOUGLAS CO. SURVEYOR

T 22 S  
 S 8 | S 9  
 S 17 | S 16  
 R 12 W  
 1982

New Accessories

1. R. CEDAR 15" DIA DOUBLE BLAZED AND SCRIBED "T 22 S R 12 W S 8 CS BT" BEARS N 31° W 14.5 FEET.
2. A SPRUCE 20" DIA DOUBLE BLAZED AND SCRIBED "T 22 S R 12 W S 9 CS BT" BEARS N 85° E 22.6 FEET.
3. R. CEDAR 14" DIA DOUBLE BLAZED AND SCRIBED "T 22 S R 12 W S 16 CS BT" BEARS S 35 1/2° E 18.8 FEET.
4. R. CEDAR 14" DIA DOUBLE BLAZED AND SCRIBED "T 22 S R 12 W S 17 CS BT" BEARS S 73° W 22.3 FEET.

Sketch of Monument, Accessories, and General Area



Location & Comments

NEW BT'S TAGGED

Comp. Declin. 19° EAST  
 Agency DOUGLAS COUNTY SURVEYOR'S OFFICE  
 Party Chief LARRY E. MONREAN  
 Notekeeper Larry E. Monrean  
 Witnesses J. M. POWELL  
 T. R. FRANSENN

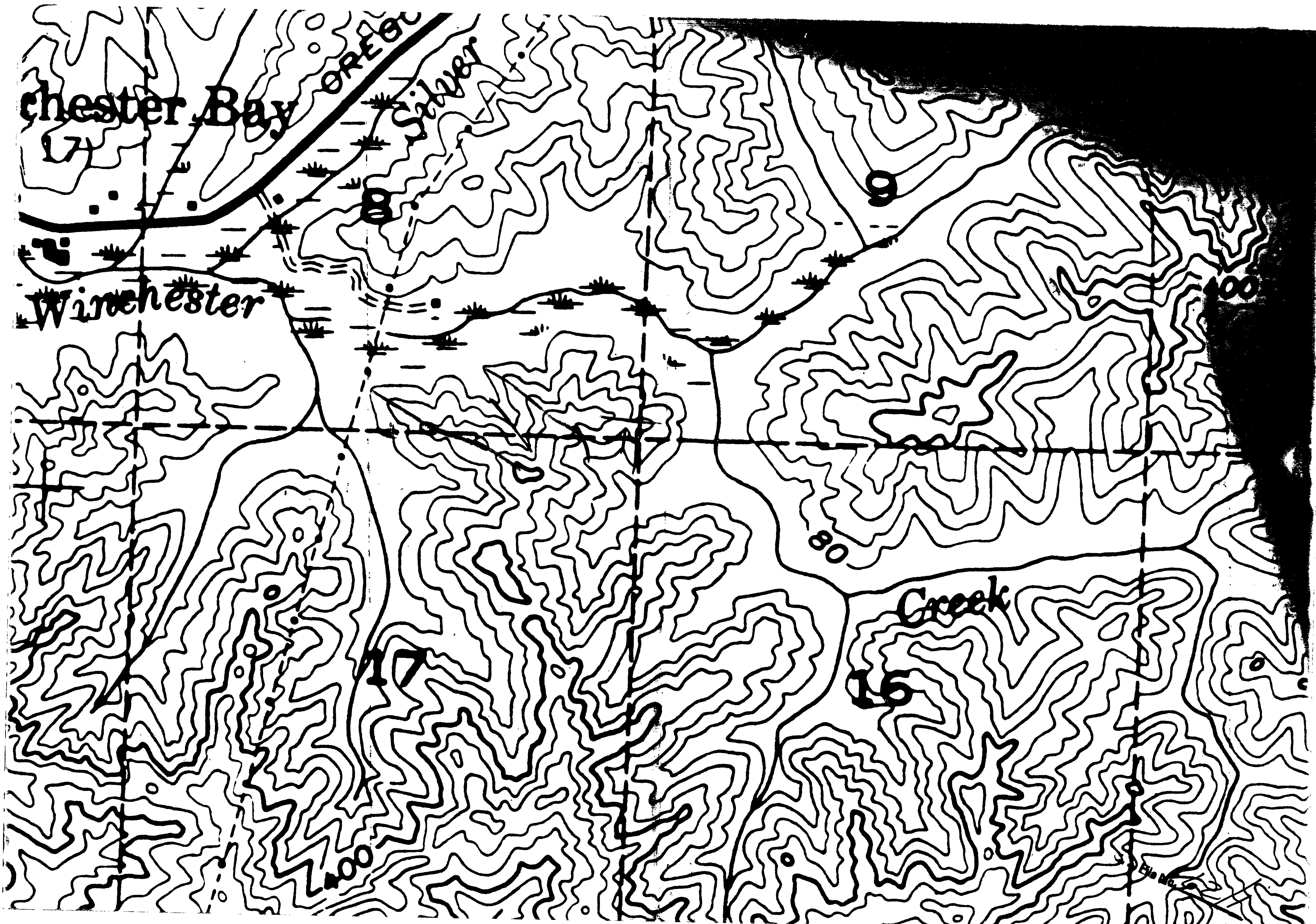
Surveyor's Seal

REGISTERED  
 PROFESSIONAL  
 LAND SURVEYOR

*Larry E. Monrean*

OREGON  
 JULY 13, 1979  
 LARRY E. MONREAN  
 21830

● ORIG. F.D.  
 ○ NEW BT  
 △ SET BRASS CAP NOW.  
 SCALE APROX 1" = 20'



Chester Bay Creek

Winchester

Creek

100

80

90

100

EAST Random line from 8/17

8/16/82  
Clear

BC  $\pi$  M  
CD AX HC

T225 R12W

STA HD SD % off set

0+00					
1+94 <sup>9</sup>	194 <sup>9</sup>	200	+23		
2+54 <sup>9</sup>	54 <sup>2</sup>	70	+63		
3+96 <sup>5</sup>	142 <sup>4</sup>	150	+33		
4+66 <sup>2</sup>	69 <sup>2</sup>	70	+9	052'N	
5+75 <sup>2</sup>	109 <sup>5</sup>	110	-10	053'N	
6+52 <sup>3</sup>	76 <sup>6</sup>	80	+30	"	
8+44 <sup>4</sup>	192 <sup>2</sup>	200	-8	ON LINE	
9+04 <sup>0</sup>	59 <sup>6</sup>	60	-12		
10+43 <sup>7</sup>	139 <sup>7</sup>	140	+7	8-31-82	
11+37 <sup>2</sup>	93 <sup>5</sup>	110	-62	053'N	
13+31 <sup>3</sup>	194 <sup>1</sup>	195	-10	(9) ON LINE	

0+00 = 1/4 cor 8/17 T225 R12W  
Fd IP & Brass Cap set by City Surveyor

9+04 Ridge Run SE/NW  
side Ridge Run N25E

189<sup>L</sup>  
5<sup>2</sup>  
194<sup>L</sup>  
(10)

File No. 6211-25

13+31<sup>3</sup>

29<sup>8</sup> 30 +12

13+61<sup>1</sup>

159<sup>6</sup> 160 +7

15+20<sup>2</sup>

103<sup>5</sup> 130 +76

16+24<sup>2</sup>

OS3'S

16+56<sup>5</sup>

32<sup>0</sup> 40 ~~+70~~

16+92<sup>4</sup>

36<sup>2</sup> 40 +47

17+58<sup>5</sup>

66<sup>L</sup> 70 -35

18+30<sup>1</sup>

72<sup>4</sup> 80 -47

19+42<sup>0</sup>

111<sup>L</sup> 121 -43

20+01<sup>9</sup>

59<sup>9</sup> 60 +7

20+49<sup>8</sup>

47<sup>a</sup> 50 -30

21+75<sup>9</sup>

126<sup>L</sup> 130 -25

22+38<sup>3</sup>

62<sup>3</sup> 65 +29

(11)

31

14+20 Draw S 15° E

16+92 Ridge Run N-5

19+80 draw <sup>110<sup>3</sup></sup> Run

21+10 draw run S 35 E

9/1/82

57<sup>Σ</sup>  
4<sup>Σ</sup>  
62<sup>Σ</sup>

(12)

C. & F. No. 62/1-

22+38<sup>2</sup>

129<sup>1</sup> 130 -12

23+67<sup>3</sup>

119<sup>2</sup> 130 -42

24+87<sup>2</sup>

104<sup>5</sup> 110 +33

25+91<sup>2</sup>

44<sup>2</sup> 45 +12

26+36<sup>4</sup>

52<sup>6</sup> 53 -12

26+89<sup>2</sup>

20 22 -45

27+09<sup>0</sup>

28<sup>6</sup> 32 -50

27 27<sup>4</sup>

(13)

22+38<sup>2</sup>

Top small Ridge S10W

24+92

draw S20W

2640  
2590  
50

49<sup>6</sup>  
3  
526

39<sup>2</sup>  
5  
417

18<sup>3</sup>  
18  
202

25740

26740

27740

18  
260  
286

5912

2540

26  
512

(14)

C. S. F. No. 6211-