

GOVERNMENT CORNER RESTORATION FORM

Township 23 S Range 8 W Sec. 33 County DOUGLAS

State OR Date 10-13-82 No. \_\_\_\_\_

Corner Designation  
T23S R8W  
S33 | S34

- \_\_\_\_\_ Condition Report Only
- \_\_\_\_\_ Not Found
- Renewed
- \_\_\_\_\_ Unrecorded
- \_\_\_\_\_ Surveyed In
- \_\_\_\_\_ Referenced Out

Previous Renewals #52

Monument(s) Found: (Condition and Source)

AREA COMPLETELY COVERED  
BY FILL FROM NEW ROAD  
CONSTRUCTION.

MONUMENT DETAIL

Accessories Found:

FD. ORIG. 40" FIR, NOW 45" (AKIVE) WITH WELL HEALED  
BLAZE.

FD. ORIG. 60" FIR, NOW 45" STUMP WITH NO  
VISIBLE BARK SCRIBING REMAINING.

FD. 16" FIR PER REN. #52, NOW 15" STUMP WITH  
GOOD SCAR.

~~#121 T23-SV~~  
~~#102 T24-BV~~

G. & E. No. 62/1-23 c

RENEWAL

Monument Set (Procedure and Description)

Monument Detail

USING RECORD DISTANCES FROM THE TWO REMAINING ORIG. BT'S AND NEAR RECORD DIST. FROM THE ONE REMAINING REN. #52 BT. I SET A 1" x 30" I.P. WITH BRASS CAP ATTACHED FOR THE SEC. COR. TO SEC 33 & 34 ONLY. COR FALLS ON A STEEP, ROCKY, ROAD FILL APPROX 47 FT. (SLOPE DIST) SOUTH OF A NEW ROAD BEARING & DIST'S TO FOUND BT'S ARE:

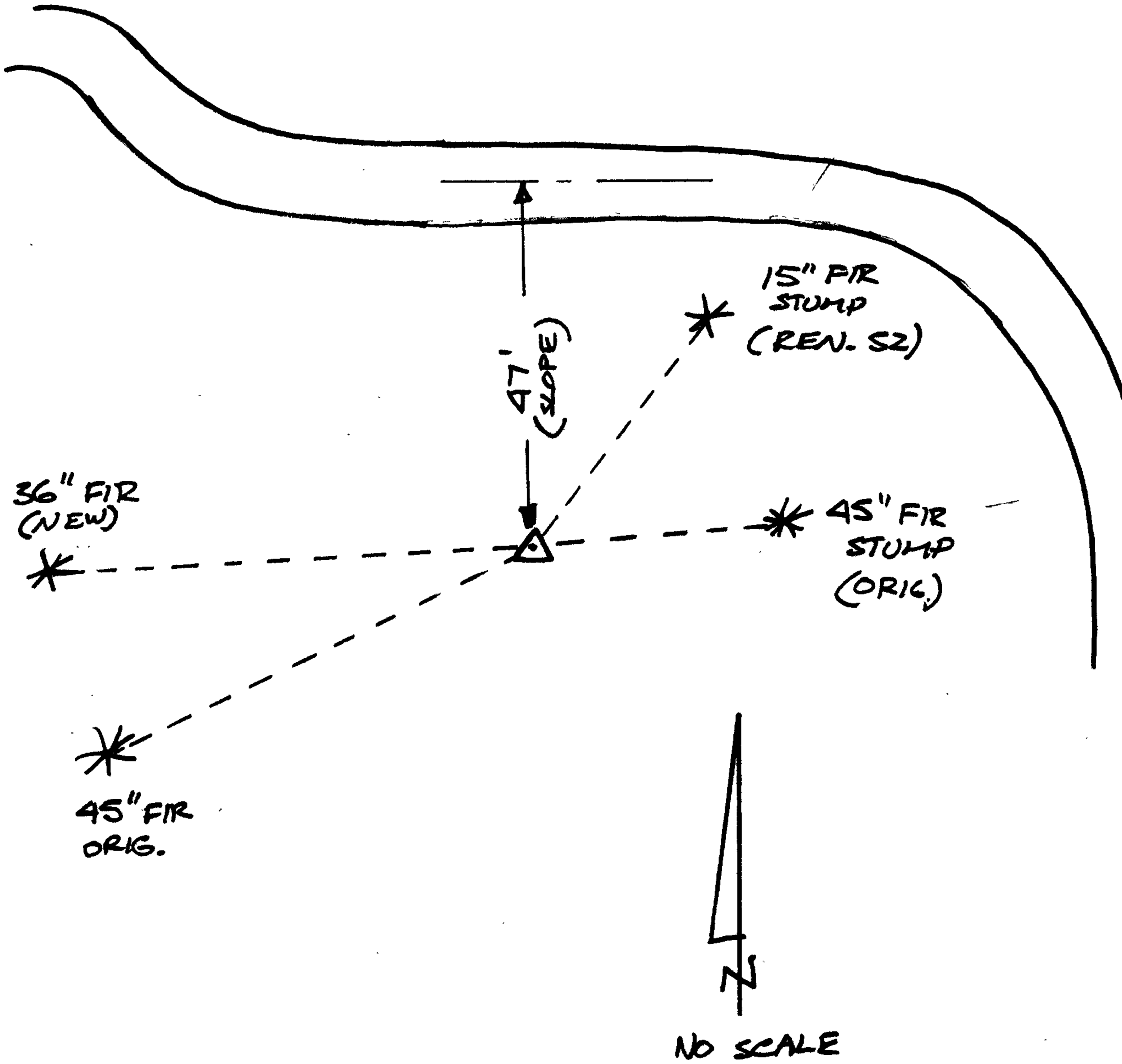
60" NOW 45" FIR (STUMP) BEARS NB5E 19<sup>L</sup>. (REC NB3E)  
 40" NOW 45" FIR (ALIVE) BEARS S63W 40<sup>2</sup>. (REC S67W)  
 16" NOW 15" FIR (STUMP) BEARS N38<sup>2</sup>E 22<sup>2</sup>. (REC N34<sup>2</sup>E 22<sup>2</sup>)

DOUGLAS  
 CO  
 T235  
 S33/S34  
 RBW  
 1982  
 SURVEYOR

New Accessories

36" FIR SCRIBED "T245 RBW S3CS BT" IN SINGLE BLAZE BEARS S86W 46<sup>2</sup> FT.

Sketch of Monument, Accessories, and General Area



Location & Comments

DCSO BT TAGS ON ALL TREES

Comp. Declin. 19°E  
 Agency DCSO  
 Party Chief GREGORY E. QUIBELL  
 Notekeeper Gregory E. Quibell  
 Witnesses KAREN REED  
 JOHN POWELL

Surveyor's Seal

REGISTERED  
 PROFESSIONAL  
 LAND SURVEYOR

*Gregory E. Quibell*

OREGON  
 JULY 13, 1979  
 GREGORY E. QUIBELL  
 1834