

GOVERNMENT CORNER RESTORATION FORM

Township 23 S Range 6 W Sec. 1 County DOUGLAS

State OR Date 8-2-82 No. _____

Corner Designation

T 23 S R 6 W

WIT.
COR.

1/4

S 1
S 12

- Condition Report Only
- Not Found
- Renewed
- Unrecorded
- Surveyed In
- Referenced Out

Previous Renewals 1957 RESURVEY - # 62

Monument(s) Found: (Condition and Source)

FD. 1957 BLM BRASS CAP, RESET
 IN REN. #62, BURIED 12" DEEP
 IN SWAMP LAND NEXT TO CREEK
 WIT. POST ALONG SIDE.

T 23 S R 6 W

1/4 S 1
S 12

1957

Accessories Found:

36" FIR PER REN #62, NOW 40, BEARS N52°W 310' (REC. PER RESURVEY N51W 312')

40" FIR PER REN. #62 NOW WASHED OUT BY CREEK. I AM UNABLE TO DETERMINE ORIG. POSITION OF TREE, HOWEVER APPROX. LOCATION FITS REASONABLY WELL.

18" FIR PER REN. #62, NOW 20" WITH GOOD SCARS BEARS S54°W 56'.

#76 ✓

RENEWAL

Monument Set (Procedure and Description)

SINCE BLM BRASS CAP WAS APPARENTLY RE-SET IN ERROR NS2W 310² RATHER THAN NS1W 312², I ESTABLISH A NEW TEMP. POSITION FROM 40" FIR AT REC. BEARING & DIST. (NS1W 312²) SINCE THIS FALLS IN SWAMP LAND WHICH IS COVERED BY WATER IN THE WINTER I SET A WIT. COR. WEST 85² FT.

MON. SET IS A 1" x 30" IP WITH BRASS CAP ATTACHED AND PROTRUDES 3" ABOVE GROUND. WIT. POST & SIGN BEARS EAST 85² FT.

A LEITZ RED-1 WAS USED TO MEASURE THE DISTANCE.

CORRECT 1/4 COR. LOCATION TO BLM BRASS CAP IS N22E 45² BLM BRASS CAP WAS LEFT IN PLACE AND ALL COR. MARKS WERE OBLITERATED.

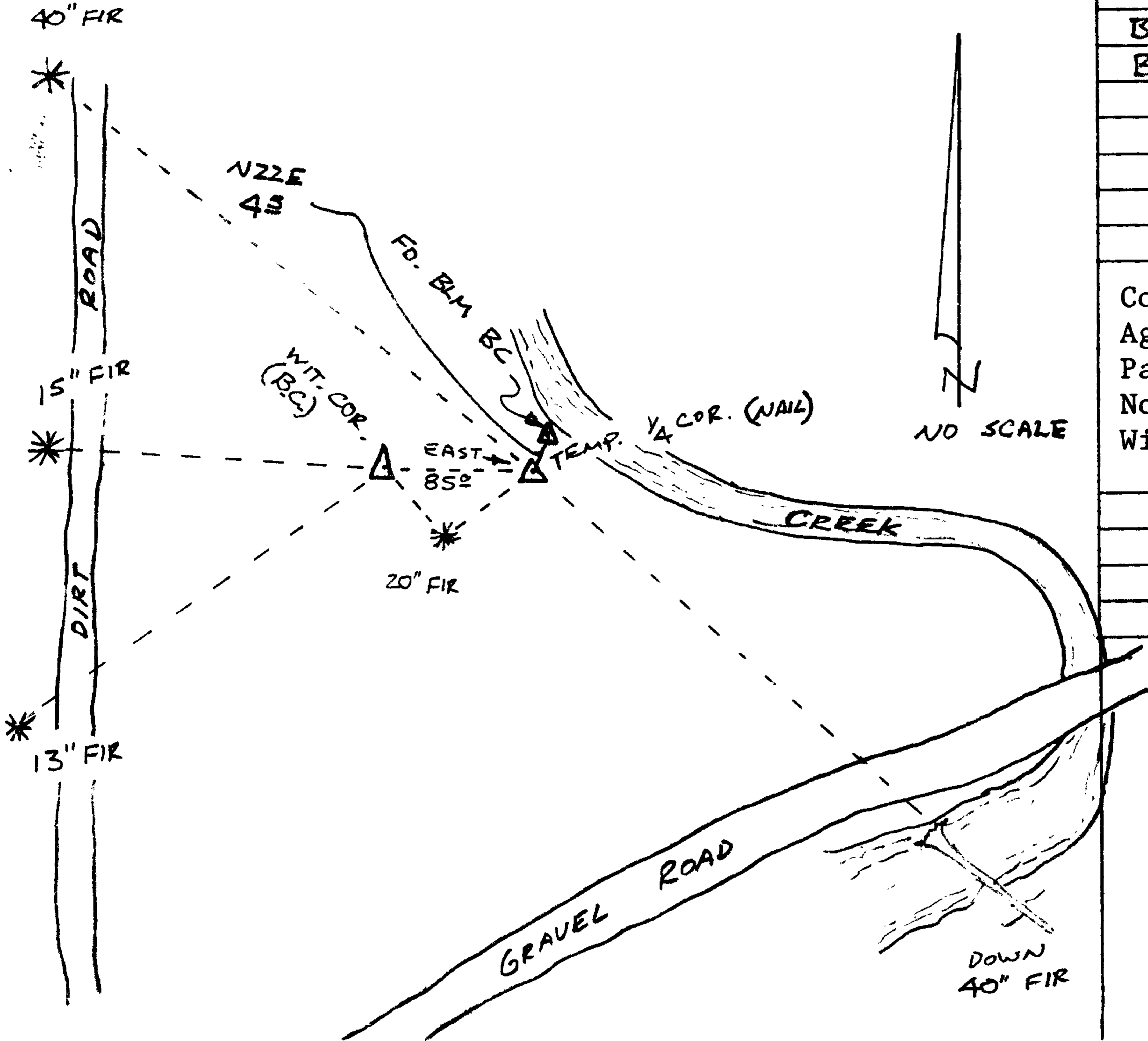
New Accessories

18" FIR BT PER REV. #62, NOW 20", BEARS S56⁰W 52² FROM THE CORRECT 1/4 POSITION AND ALSO BEARS S55E 51² FROM WIT. COR.

13" FIR SCRIBED "CS X BT" IN DOUBLE BLAZE BEARS S55W 210² FROM WIT. COR.

15" FIR SCRIBED "X CS BT" IN DOUBLE BLAZE BEARS N87W 165² FROM WIT. COR.

Sketch of Monument, Accessories, and General Area



Location & Comments

BT TAG PUT ON ALL BT'S

Comp. Declin. 19° E
 Agency DCSO
 Party Chief GREGORY E. QUIBELL
 Notekeeper Gregory E. Quibell
 Witnesses KAREN REED

OK JEM

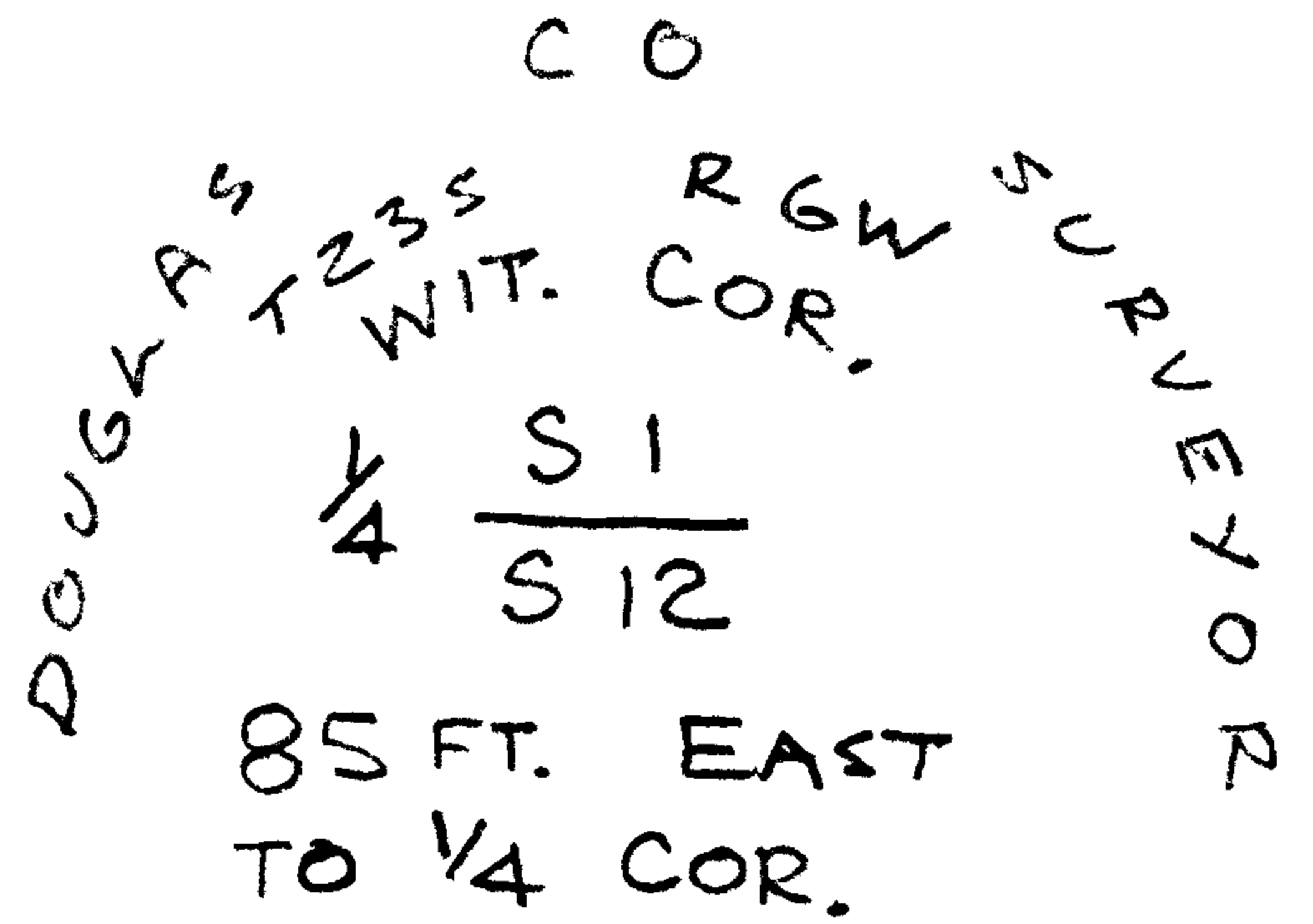
Surveyor's Seal

REGISTERED
PROFESSIONAL
LAND SURVEYOR

Gregory E. Quibell

OREGON
JULY 13, 1979
GREGORY E. QUIBELL
1834

Monument Detail



1982