

GOVERNMENT CORNER RESTORATION FORM

Township 26S Range 3E Sec. 29 County DOUGLAS

State OR. Date 6-4-82 No. _____

Corner Designation T 26 S R 3 E

1/4 30 | 29

- Condition Report Only
- Not Found
- Renewed
- Unrecorded
- Surveyed In
- Referenced Out

Previous Renewals _____

MONUMENT DETAIL

Monument(s) Found: (Condition and Source)

FD. ORIG. 8" FIR, NOW 9", FOR
1/4 COR. GOOD SCAR ON EAST
AND WEST SIDES AS PER
ORIG. NOTES. TREE IS
ALIVE.

Accessories Found:

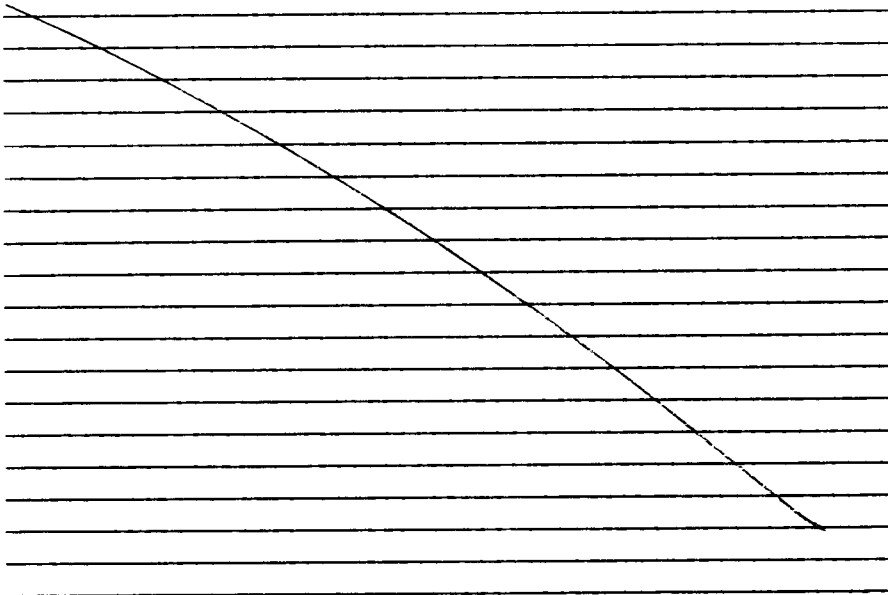
FD. ORIG. 26" NOW 35" FIR WITH GOOD SCAR BEARS
S 70 1/2° E 77 1/2 FT. (REC. S 69° E)

FD. ORIG. 16" NOW 18" FIR WITH GOOD SCAR BEARS N 60° W
24 1/2 FT (REC. N 56° W)

RENEWAL

Monument Set (Procedure and Description)

Monument Detail



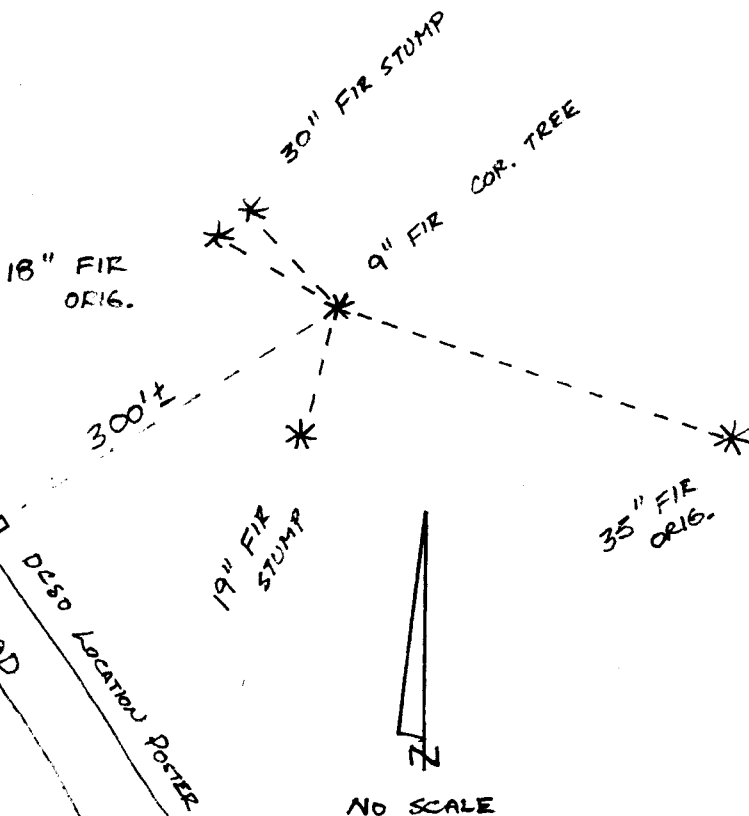
New Accessories

SET SPIKE STAMPED "BO 1" IN TOP OF 30" FIR STUMP BEARS
N 44° W 22 1/2 FT (TO SPIKE)

SET SPIKE STAMPED "BO 2" IN TOP OF 19" FIR STUMP BEARS
S 14 1/2° W 23 1/4 FT (TO SPIKE)

Sketch of Monument, Accessories, and General Area

Location & Comments



DCSO BT TAGS PUT
ON ALL TREES.

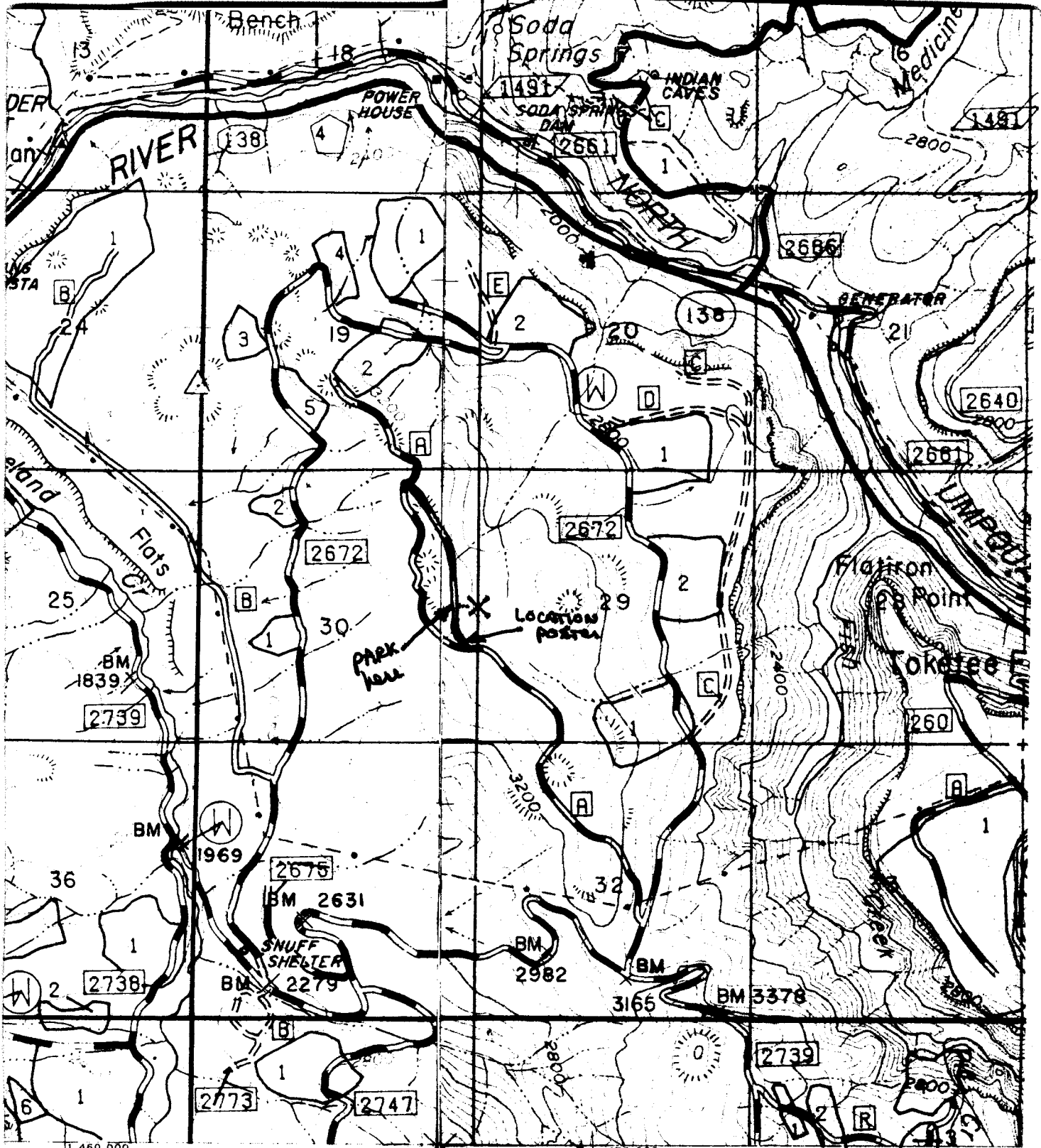
Comp. Declin. 19° E
Agency DCSO
Party Chief GREGORY E. QUIBELL
Notekeeper Gregory E. Quibell
Witnesses JOHN POWELL

Surveyor's Seal

REGISTERED
PROFESSIONAL
LAND SURVEYOR

Gregory E. Quibell

OREGON
JULY 13, 1979
GREGORY E. QUIBELL
1834



R 35 122°30'

R: