

GOVERNMENT CORNER RESTORATION FORM

Township 26 S Range 9 W Section 22

County DOUGLAS State OR

Date 6-2-82 No. _____

Corner Designation _____

Condition Report Only
Not Found
 Renewed
Unrecorded
Surveyed In
Referenced Out

Previous Renewals _____

Monument(s) Found: (Condition and Source)

FD. ORIG. 15" x 12" x 10" SANDSTONE, NOW 15" x 10" x 7" WITH "4 S" VISIBLE ON NORTH FACE. STONE WAS FIRMLY SET PROTRUDING 5" OUT OF GROUND.

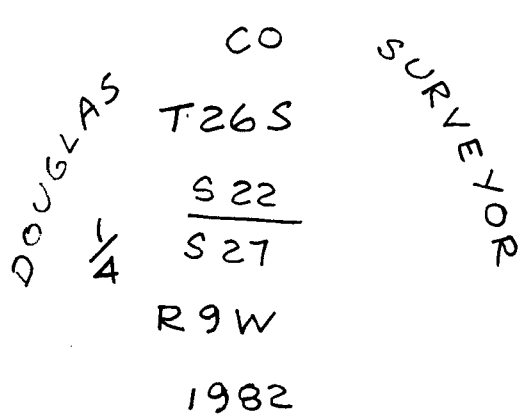
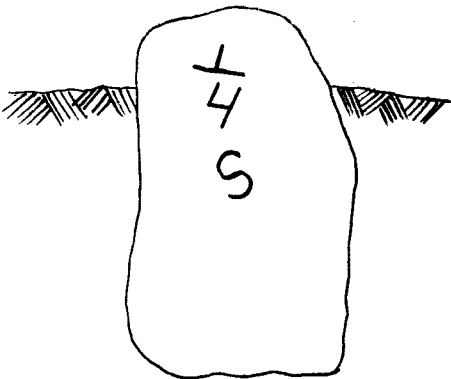
Accessories Found:

FD. ORIG. 13" NOW 24" CEDAR, PREVIOUSLY OPENED SHOWING ROTTED FACE WITH NO SCRIBING VISIBLE, BEARS S 64° E 23.8 (REC. S 60 E).

FD. ORIG. 26" NOW 32" CEDAR PREVIOUSLY OPENED SHOWING ROTTED FACE WITH NO SCRIBING VISIBLE, BEARS N 51° W 58' (REC. N 47 W).

Detail Found Monument

Detail Set Monument



Monument Set (Procedure and Description)

AT THE LOCATION OF THE FOUND STONE I SET A 1" x 30" IP WITH BRASS CAP ATTACHED PROTRUDING 8" OUT OF THE GROUND. I PLACE ORIG. STONE ALONG NORTH EDGE OF BRASS CAP AND LEAVE IT PROTRUDING 5" OUT OF GROUND.

New Accessories

11" HEMLOCK SCRIBED "4 S 22 CS BT" IN DOUBLE BLAZE BEARS N 46 E 36.2

I RESCRIBE ORIG. 13" NOW 24" CEDAR "4 S 27 CS BT" IN DOUBLE BLAZE.

I RESCRIBE ORIG. 26" NOW 32" CEDAR "4 S 22 CS BT" IN DOUBLE BLAZE

Location & Comments

Comp. Dec.

19° E

Agency

DCSO

Party Chief

GREGORY E. QUIBELL

Notes

GREGORY E. QUIBELL

Witnesses

JOHN POWELL

Surveyor's Sealed
PROFESSIONAL
LAND SURVEYOR

GREGORY E. QUIBELL

OREGON
JULY 13, 1979
GREGORY E. QUIBELL
1834

234

CLERK 6/1/82 36-19

OK
JEM

C

