

GOVERNMENT CORNER RESTORATION FORM

Township 26S Range 9W Section 22

County DOUGLAS State OR

Date 5-27-82 No. \_\_\_\_\_

Corner Designation T26S R9W

22	23
27	26

Condition Report Only  
 Not Found  
 Renewed  
 Unrecorded  
 Surveyed In  
 Referenced Out

Previous Renewals \_\_\_\_\_

Monument(s) Found: (Condition and Source)

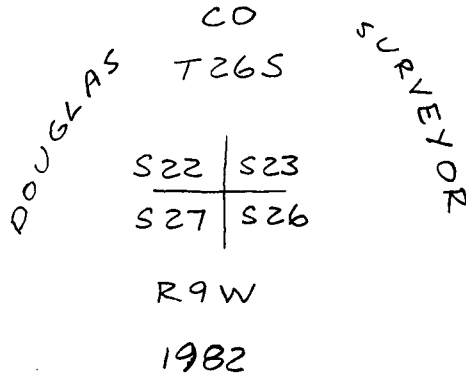
FD. UNRECORDED 3/4" IP PROTRUDING 6" OUT OF GROUND.

Accessories Found:

FD. ORIG. 32" FIR, NOW 33" WINDFALL STUMP WITH GOOD SCARS.  
FD. ORIG. 14" HEMLOCK NOW 20" STUMP, SCRIBED "T26S R9W S27" VISIBLE IN PREVIOUSLY OPENED BLAZE.  
FD. ORIG. 12" HEMLOCK, NOW 18" STUMP, I OPEN BURLED FACE AND FIND SCRIBED "BT"  
ORIG. 13" HEMLOCK TAKEN OUT BY CAT ROAD.

Detail Found Monument

Detail Set Monument



Monument Set (Procedure and Description)

I SET A 1"X30" IP WITH BRASS CAP ATTACHED AT THE INTERSECTION OF THE TWO REMAINING HEMLOCK BT STUMPS USING REC. DISTANCES TO THE CENTERS OF THE STUMPS. BEARINGS & DISTANCE TO THESE TREES ARE AS FOLLOWS: ORIG. 14" NOW 20" HEMLOCK BEARS S31W 32<sup>3</sup> (REC. S33W). ORIG. 12" NOW 18" HEMLOCK BEARS N30W 31<sup>0</sup> (REC. N33W) THE ORIG. FIR WINDFALL DOES NOT HAVE A DEFINITE STUMP HOLE, BUT APPEARS TO FIT CORNER LOCATION QUITE WELL.

New Accessories

SPIKE IN TOP OF 30" HEMLOCK STUMP BEARS N86W 23<sup>0</sup>  
SPIKE IN TOP OF 30" HEMLOCK STUMP BEARS S75E 35<sup>1</sup>  
SPIKE IN TOP OF 23" HEMLOCK STUMP BEARS N37E 65<sup>2</sup>  
FD. UNRECORDED 3/4" IP BEARS S9E 2<sup>6</sup> FT.

Location & Comments

Comp. Dec.

Surveyor's Seal

\_\_\_\_\_  
 \_\_\_\_\_  
 \_\_\_\_\_  
 \_\_\_\_\_  
 \_\_\_\_\_  
 \_\_\_\_\_  
 \_\_\_\_\_

19° E  
 Agency DCSO  
 Party Chief GREGORY E. QUIBELL  
 Notes GREGORY E. QUIBELL  
 Witnesses JOHN POWELL  
CARY L. LAKE

REGISTERED PROFESSIONAL LAND SURVEYOR  
GREGORY E. QUIBELL  
 OREGON  
 JULY 13, 1979  
 GREGORY E. QUIBELL  
 1834

C.S. BROWN  
6/30-17

C

