

GOVERNMENT CORNER RESTORATION FORM

Township 27S Range 8W Section 25

County DOUGLAS State OR.

Date 5-18-82 No. _____

Corner Designation T27S R8W

1/4 S26 | S25

- Condition Report Only
- Not Found
- Renewed
- Unrecorded
- Surveyed In
- Referenced Out

Previous Renewals _____

Monument(s) Found: (Condition and Source)

FD. UNRECORDED 1 1/4" IP PROTRUDING 8" OUT OF GROUND.

Accessories Found:

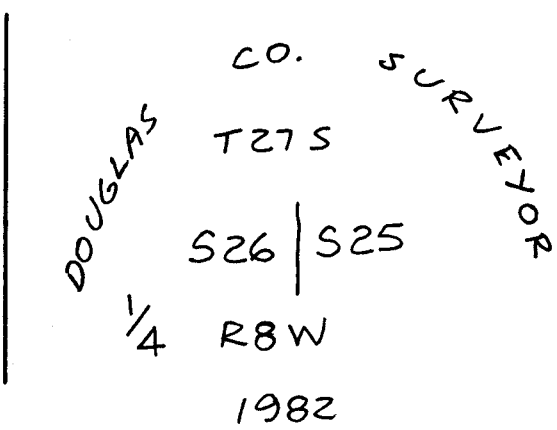
FD. ORIG. 30" NOW 40" FIR STUMP WITH WELL HEALED-OVER DOUBLE BLAZE.

FD UNRECORDED 33" FIR STUMP WITH HEALED UP SCAR, I OPENED AND FOUND 1/4S BT IN DOUBLE BLAZE.

ORIG. SW FIR BT IS COMPLETELY GONE.

Detail Found Monument

Detail Set Monument



Monument Set (Procedure and Description)

USING RECORD BEARING & DISTANCE FROM ORIG.
30" NOW 40" FIR BT (S40W 9.2 FT) I SET A
1" x 30" IP WITH BRASS CAP ATTACHED. BRASS CAP PROTRUDES
9" OUT OF GROUND.
UNRECORDED 1 1/4 IP BEARS S40W 1.65 FT. (APPEARS
TO HAVE BEEN SET BY MEASURING FROM FACE OF FIR BT.)

New Accessories

7" CHINQUAPIN SCRIBED "1/4 S25CS BT" IN DOUBLE BLAZE BEARS S60E 13.6.
17" CEDAR STUMP WITH "W" NAIL IN FACE AND 1/4 IN BARK BEARS 97SE 6.4 TO NAIL.
12" YEW SCRIBED "1/4 S 25CS BT" IN DOUBLE BLAZE BEARS N16E 44.6
33" FIR STUMP WITH FOUND SCRIBED "1/4 S BT" BEARS N44W 35.1 TO
PK NAIL SET IN FACE.
38" FIR STUMP WITH "W" NAIL IN FACE BEARS N71W 45.6
TO NAIL.

Location & Comments

Comp. Dec. 19° E

Agency DCSO

Party Chief

GREGORY E. QUIBELL

Notes

GREGORY E. QUIBELL

Witnesses

JOHN POWELL

Surveyor's Seal
 REGISTERED
 PROFESSIONAL
 LAND SURVEYOR

GREGORY E. QUIBELL
 OREGON
 JULY 13, 1979
 GREGORY E. QUIBELL
 1834

#684
 CLS No. 61/36-12

