

GOVERNMENT CORNER RESTORATION FORM

Township T28S Range 7W Section SE 13

County DOUGLAS State OREGON

Date 5-11-82 No. \_\_\_\_\_

Corner Designation

R 7 W	T28S		R 6 W
	S13	S18	
	S24	S19	

- Condition Report Only
- Not Found
- Renewed
- Unrecorded
- Surveyed In
- Referenced Out

Previous Renewals 223, CS 56/14

Monument(s) Found: (Condition and Source)

A 1 IN. DIAM. IRON PIPE SET FIRMLY IN THE GROUND PROTRUDING 0.9 FT. ABOVE GROUND WITH BRASS CAP STAMPED "COUNTY SURVEYORS OFFICE T28S S13 S18 S24 S19 R7W R6W 1973"

Accessories Found:

A 48" DIAM. COTTONWOOD BEARING S. 46 1/2° W., 15.0 FT. DIST WITH VISIBLE SCRIBE "T28S 7W S2 S BT" IN A PARTIALLY HEALED SINGLE BLAZE.

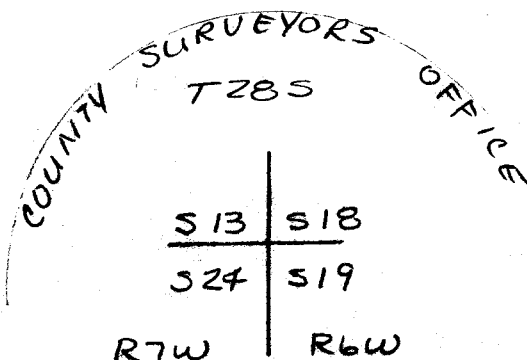
A 12" DIAM. MAPLE (EASTERLY FORK OF DOUBLE TRUNK TREE) BEARS N. 34° W., 19.2 FT. DIST. WITH VISIBLE SCRIBE "T28S R7W S13 CS BT" IN A DOUBLE BLAZE.

AN 18" DIAM. MAPLE, NOW 19" (SOUTHERLY FORK OF A DOUBLE TRUNK TREE) BEARS N. 65° E., 143.6 FT. DIST. WITH VISIBLE SCRIBE "T28S R6W S18 CS BT" IN A SINGLE BLAZE.

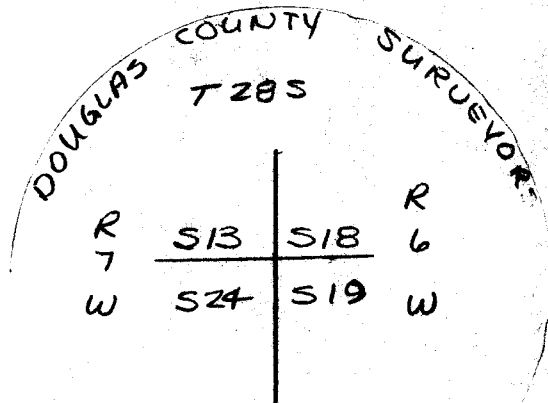
A 20" DIAM. COTTONWOOD, NOW 22" DIAM. DOWN TREE WITH VISIBLE SCRIBE "18 R" IN A SINGLE BLAZE, THE STUMP BEARS S 13 1/2° E., 41.5 FT. DIST.

(CONT. ON ADDITIONAL NARRATIVE)

Detail Set Monument



1973



1982

Monument Set (Procedure and Description)

SET A 1" X 3/8" IRON PIPE WITH BRASS CAP STAMPED "DOUGLAS COUNTY SURVEYOR T28S S13 S18 S24 S19 R7W R6W 1982" FIRMLY IN THE GROUND PROTRUDING 0.2 FT.

SET CORNER BY CALCULATING CORRECT POSITION FROM SURVEY BY F.L. INGRAM 1973 (SEE CS 56/14) NEW POSITION BEARS S 2° W., 29.8 FT. FROM FD MONUMENT. REMOVE CAP FROM SAME LEGAL PIPE IN POSITION. DRIVE YELLOW PLASTIC CAP MARKED "DOUGLAS COUNTY" INTO PIPE.

New Accessories

- USE FD ACCESSORIES NEW BEARING AND DIST. AS FOLLOWS:
- A 12" MAPLE BEARS N 9° W., 46.1 FT. DIST.
- A 19" MAPLE BEARS N 62° E., 150.9 FT. DIST.
- A 48" COTTONWOOD BEARS N 22 1/2° W., 21.7 FT. DIST. RESCRIBE "T28S R7W 13 CS BT" IN DOUBLE BLAZE. DEFACE OTHER BLAZE.
- \* A 47" COTTONWOOD BEARS S 44° E., 3.1 FT TO BOAT SPIKE SET ABOVE FENCING. (IMPRACTICAL TO SCRIBE) (\* NEW)

Location & Comments

CORNER LOCATED SLY SIDE DIM ROAD, 2 FT NORTH OF E-W FENCE

Comp. Dec. 20° EAST

DESO  
Agency  
KAREN REED  
Party Chief  
KAREN REED

Surveyor's Seal



Notes  
TERRIE PLOUFF  
Witnesses

Joy L. Monahan

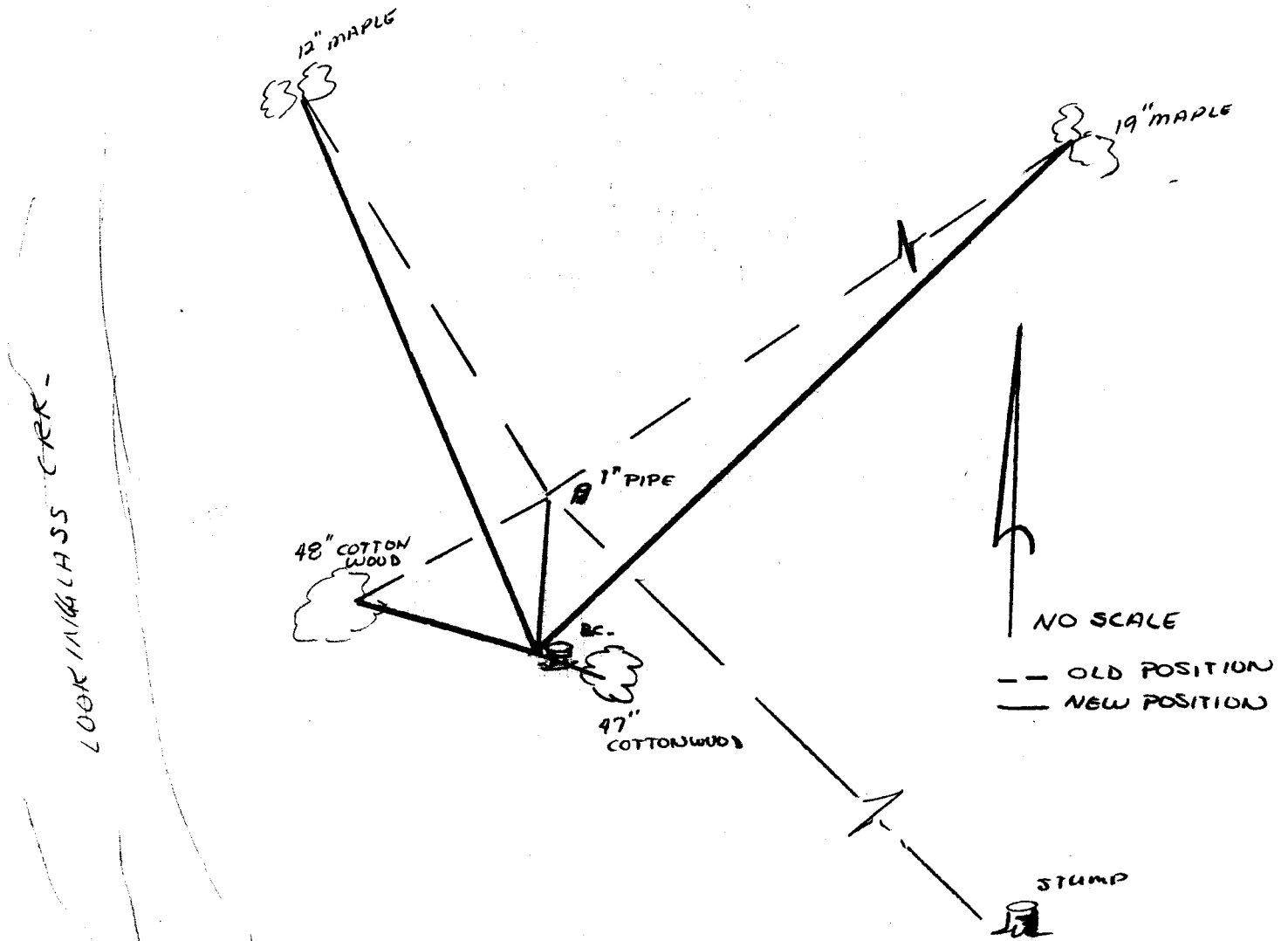


ADDITIONAL NARRATIVE  
(FD, ACCESS. CONT)

PLACE BOAT SPIKE IN STUMP AT RECORD BEARING  
AT A DIST OF 40.9 FT. NO ORIGINALS FD.

NO SUITABLE TREES IN SW QUADRANT

SKETCH OF MONUMENT, ACCESSORIES, AND GENERAL AREA



LAND SURVEYOR  
REGISTERED  
STATE OF TEXAS

*James H. [Signature]*

LAND SURVEYOR  
REGISTERED  
STATE OF TEXAS

GOVERNMENT CORNER RESTORATION FORM

Township 285 Range 7W Sec. 13 SE County DOUGLAS

State OREGON Date 5-11-82 No. \_\_\_\_\_

Corner Designation

T285

R	S13	S18	R
7			6
W	S24	S19	W

- Condition Report Only
- Not Found
  - Renewed
  - Unrecorded
  - Surveyed In
  - Referenced Out

Previous Renewals 223 CS 56/17 T28-7 T28-6 #150

Monument(s) Found: (Condition and Source)

A 1" IRON PIPE WITH BRASS CAP  
STAMPED "COUNTY SURVEYORS"  
OFFICE T285

S13	S18
S24	S19
R7W	R6W
1973	

PROTRUDING 0.9 FT ABOVE GROUND

I REMOVE CAP AND LEAVE IRON PIPE.

SET NEW CORNER 29.83 FT.  
AT AN ANGLE OF 3° 20' 09" RT. OF  
PREVIOUS TRAVERSE POINT FROM  
PRESENT LOCATION OF IRON PIPE.  
(SEE SURVEY CS 56/14)

COUNTY SURVEYORS  
T 285  
OFFICE

S13	S18
S24	S19
R7W	R6W

Accessories Found:

DUPLICATE  
1973

A 48" COTTONWOOD BEARING S 46 1/2 W., 15.0 FT. DIST  
WITH VISIBLE SCRIBE "285 7W S2 S BT" IN A  
PARTIALLY HEALED SPIKE BLAZE.

A 12" DIAM. MAPLE (EASTERLY FORK OF DOUBLE TRUNK TREE)  
BEARS N. 34° W., 19.2 FT. DIST. WITH VISIBLE SCRIBES  
"285 R7W S13 CS BT" IN A DOUBLE BLAZE.

AN 18" MAPLE NOW 19" DIAM. (SOUTHERLY FORK OF A DOUBLE  
TRUNK TREE) BEARS N 65 E, 143.6 FT. DIST. WITH  
VISIBLE SCRIBE "T285 R6W S18 CS BT" IN A SINGLE  
BLAZE.

A 20" DIAM COTTONWOOD NOW 22" DIAM. DOWN TREE STUMP OF  
WHICH BEARS S 13 1/2 E, 41.5 FT. DIST. WITH VISIBLE  
SCRIBES "28 R" IN A SINGLE BLAZE. PLACE BOAT  
SPIKE IN STUMP AT RECORDED BEARING AND A DIST. OF 40.9 FT.  
TO BOAT SPIKE

CS 56/17-8

RENEWAL

Monument Set (Procedure and Description)

Monument Detail

SET A 1" IRON PIPE WITH BRASS  
 THE STAMPED "DOUGLAS COUNTY SURVEYOR  
 T 285  
 R 513 | 518 R  
 7 524 | 514 6  
 W 1982  
 PROTRUDING 0.2 FT. ABOVE GROUND  
 SET THIS CORNER TO CORRECT  
 CORNER POSITION ESTABLISHED IN  
 A 1973 SURVEY BY F.L. INGRAM

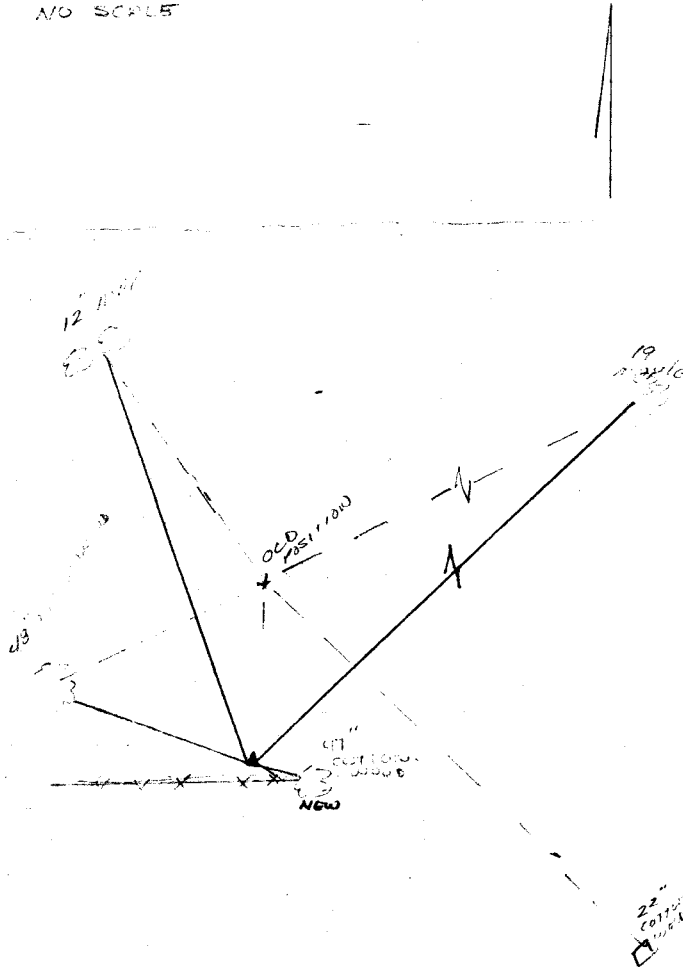
DOUGLAS COUNTY SURVEYOR  
 T 285  
 R 513 | 518 R  
 7 524 | 514 6  
 W 1982

OLD  
New Accessories

- A 43 IN DIAM. COTTONWOOD BEARS N 22 1/2° W. 21.7 FT. DIST. SCRIBED "T 285 R 7 W 513 CS BT" IN A DOUBLE BLAZE. I. DEFACE OLD SCRIBES.
- (NEW) A 47 IN. DIAM. COTTONWOOD WITH BOAT SPIKE ABOVE FENCING BEARS S 44° E. 3.1 FT. DIST. TO BOAT SPIKE. LOCATION OF FENCING MAKES BLAZING IMPRACTICAL.
- A 12" DIAM. MAPLE BEARS N 9° W. 46.1 FT. DIST. PREVIOUSLY N 34° W. 19.2 FT.
- A 19" DIAM. MAPLE BEARS N 62° E. 158.9 FT. DIST. PREVIOUSLY N 65° E. 143.6 FT.
- NO SUITABLE TREES IN SW QUADRANT - 1" DIAM IRON PIPE BEARS N 3° E. 29.83 FT. DIST.

Sketch of Monument, Accessories, and General Area

--- OLD  
 ——— NEW  
 NO SCALE



Location & Comments

COR. LOCATED OFF S.W. CORNER  
 OF DIRT ROAD 2 FT NORTH  
 OF E-W LINE

Comp. Declin. 20° EAST  
 Agency ICCO  
 Party Chief KAREN REED  
 Notekeeper KAREN REED  
 Witnesses T. PLOUFF

Surveyor's Seal