

GOVERNMENT CORNER RESTORATION FORM

Township 27S Range 8W Sec. 23 County DOUGLAS

State OR Date 5-6-82 No. \_\_\_\_\_

Corner Designation T 27S R 8W

S23  
S26

- Condition Report Only
- Not Found
- Renewed
- Unrecorded
- Surveyed In
- Referenced Out

Previous Renewals \_\_\_\_\_

MONUMENT DETAIL

Monument(s) Found: (Condition and Source)

FD. UNRECORDED 3/4" IP FIRMLY SET  
PROTRUDING 10" OUT OF GROUND.

Accessories Found:

FD. ORIG. 28" FIR NOW 33" STUMP WITH PITCHED OVER  
PREVIOUSLY OPENED FACE. "W" NAIL IN EDGE OF FACE. I  
OPEN MORE OF FACE AND FIND SCRIBED "18" VISIBLE UNDER  
LAYER OF PITCH.

ORIG. 30" FIR BT APPEARS TO BE DESTROYED BY LOGGING.

#624

RENEWAL

Monument Set (Procedure and Description)

Monument Detail

AT REL BEARING & DISTANCE FROM  
 ORIG. 28" NOW 33" FIR STUMP (N62E  
 18 1/2 FT) I SET A 1" x 30" IP WITH  
 BRASS CAP ATTACHED. FD. 3/4" IP  
 BEARS N 83W 1 1/2 FT. I DO NOT  
 DISTURB 3/4" IP.

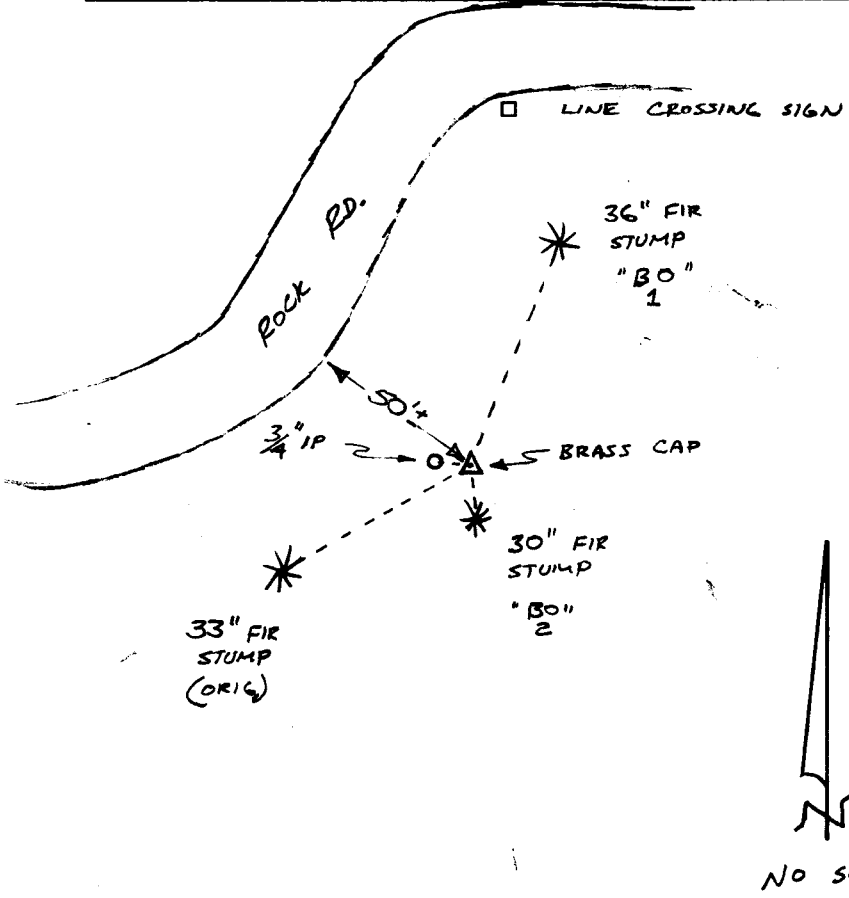
DOUGLAS CO SURVEYOR  
 T275  
 1/4 S23  
 S26  
 R8W  
 1982

New Accessories

SET SPIKE IN TOP OF 36" FIR STUMP BEARS N23E 27 1/2 FT. SPIKE IS STAMPED  
 "BO"  
 1

SET SPIKE IN TOP OF 30" FIR STUMP BEARS S5 1/2 E 7 1/2 FT. SPIKE IS STAMPED  
 "BO"  
 2

Sketch of Monument, Accessories, and General Area



Location & Comments

Comp. Declin. 19° E  
 Agency DCSO  
 Party Chief GREGORY E. QUIBELL  
 Notekeeper Gregory E. Quibell  
 Witnesses JOHN POWELL

Surveyor's Seal

REGISTERED  
 PROFESSIONAL  
 LAND SURVEYOR

*Gregory E. Quibell*

OREGON  
 JULY 13, 1979  
 GREGORY E. QUIBELL  
 1834

OK  
 JEM

NO SCALE