

GOVERNMENT CORNER RESTORATION FORM

Township 22S Range 4W Sec. 19 County DOUGLAS

State OR. Date 2-9-82 No. \_\_\_\_\_

Corner Designation T 22 S

R	24	19	R
S	25	30	4
W			W

- \_\_\_\_\_ Condition Report Only
- \_\_\_\_\_ Not Found
- Renewed
- \_\_\_\_\_ Unrecorded
- \_\_\_\_\_ Surveyed In
- \_\_\_\_\_ Referenced Out

Previous Renewals (T.22-4) #44, #74, 1973 RESURVEY  
(T.22-5) #58-78

MONUMENT DETAIL

Monument(s) Found: (Condition and Source)

FD. DCSD BRASS CAP SET IN REN. #44  
 (MARKED AS PER DETAIL ON RT) FIRMLY  
 SET PROTRUDING 9" OUT OF GROUND.

FD. STONE SET BY THEIL WITH "+" ON  
 TOP, MENTIONED IN REN. #44, JUST EAST  
 OF BRASS CAP. STONE PROTRUDES 4"  
 OUT OF GROUND.

COUNTY SURVEYORS OFFICE  
 T 22 S

RSW	S24	S19	RAW
	S25	S30	

1959

Accessories Found:

- ① FD. ORIG. 10" NOW ROTTED 28" FIR STUMP PREVIOUSLY OPENED  
 IN REN. #44 BEARS N52W 21<sup>8</sup> FT. SCRIBING NO LONGER  
 VISIBLE.
- ② FD. 6" NOW 13" FIR PER REN. #44 BEARS S32°E 26<sup>+</sup> FT.  
 REC. (S30E) WITH WELL HEALED DOUBLE BLAZE.
- ③ FD. 7" NOW 13" FIR PER REN. #74 BEARS S4½°W 41° FT.  
 (REC S6½W) WITH WELL HEALED DOUBLE BLAZE

NOTE: ALL OTHER BEARING TREES HAVE BEEN DESTROYED  
 BY RECENT LOGGING.

NOTE: DUE TO WIRE FENCE & 2 STEEL FENCE POSTS BEING  
 WITHIN APPROX 2 FT. OF BRASS CAP, ALL OF MY COMPASS  
 BEARINGS WERE TAKEN ON LINES PROJECTED BACK APPROX.  
 10 FT. FROM BRASS CAP.

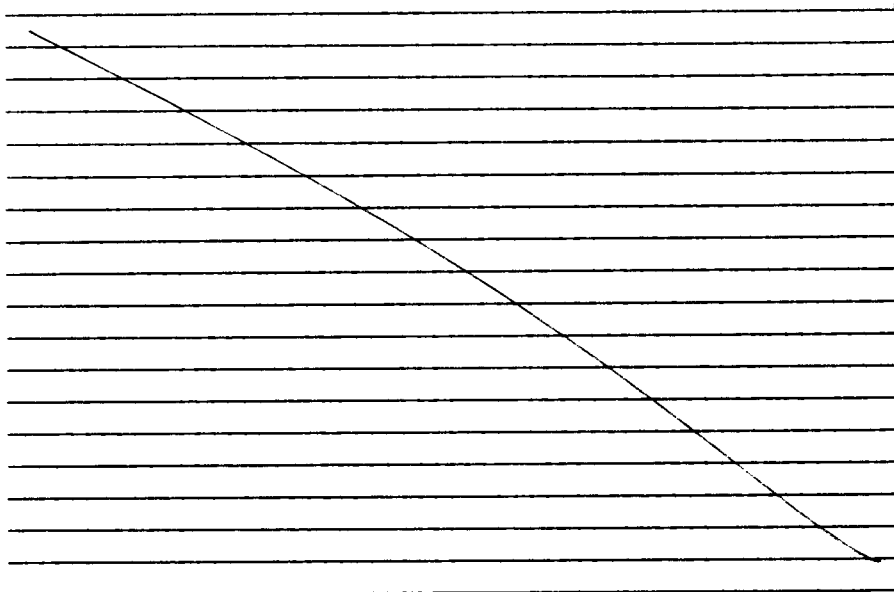
#138 T. 22-4 X

#170 T. 22-5 X

RENEWAL

Monument Set (Procedure and Description)

Monument Detail

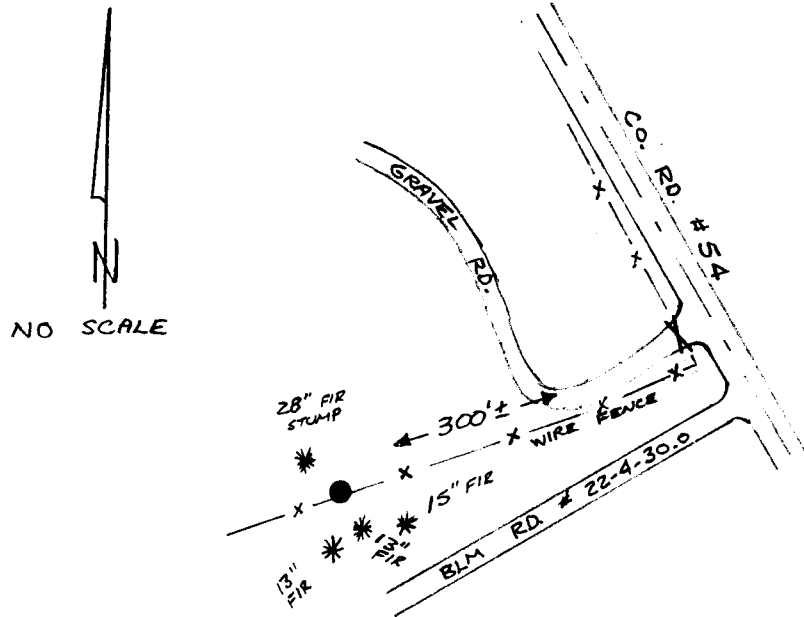


New Accessories

15" FIR SCRIBED "T22S R4W S 30 CS BT" IN DOUBLE BLAZE  
 BEARS S 63° E 54<sup>6</sup> FT.

Sketch of Monument, Accessories, and General Area

Location & Comments



Comp. Declin. 19° EAST  
 Agency DCSO  
 Party Chief GREGORY E. QUIBELL  
 Notekeeper Gregory E. Quibell  
 Witnesses TERRIE PLOUFF

*OK*  
*[Signature]*

Surveyor's Seal

REGISTERED  
 PROFESSIONAL  
 LAND SURVEYOR

*Gregory E. Quibell*

OREGON  
 JULY 13, 1979  
 GREGORY E. QUIBELL  
 1834