

GOVERNMENT CORNER RESTORATION FORM

Township 23 S Range 7 W Sec. 33 County DOUGLAS

State OR Date 1-6-82 No. \_\_\_\_\_

Corner Designation

T 23 S  
R 333 / MC  
7  
W S 4  
T 24 S

- \_\_\_\_\_ Condition Report Only
- \_\_\_\_\_ Not Found
- Renewed
- \_\_\_\_\_ Unrecorded
- \_\_\_\_\_ Surveyed In
- \_\_\_\_\_ Referenced Out

Previous Renewals # 147 T 23-7 # 127 T 24-7

MONUMENT DETAIL

Monument(s) Found: (Condition and Source)

FD. 5/8" x 30" IR PER REN. # 147 FIRMLY SET BURIED 4" IN THE GROUND, WITH A WHITE 2"x2" POST 1 FT HIGH ALONGSIDE.

Accessories Found:

FD. 40" NOW 44" FIR, PER REN. # 147, WITH PARTIALLY HEALED PITCHED OVER BLAZE BEARS N 52° W 43 1/2 FT. (REC. 423).

FD. 18" NOW 20" MAPLE PER REN. # 147 WITH SCRIBED "T 24 S, RTW S 4 MC BT" VISIBLE IN UNHEALED BLAZE, BEARS S 36° E 14° FT.

# 157 - T 23-7 X

# 144 - T 24-7 X

G. S. File No. 61/30-7 C

RENEWAL

Monument Set (Procedure and Description)

Monument Detail

AT THE LOCATION OF THE FD. 5/8" IR I  
 SET A 1"x30" IP WITH BRASS CAP ATTACHED  
 MARKED AS PER DETAIL ON RT. I  
 BURY 5/8" IR ALONG NORTH EDGE OF  
 BRASS CAP 6" DEEP.

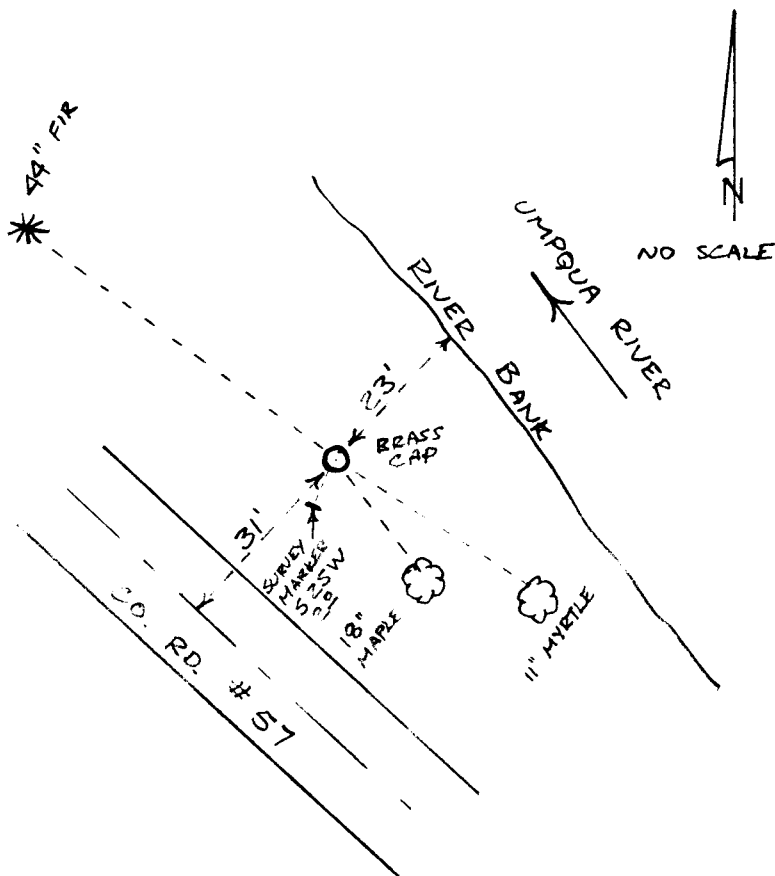
COUNTY SURVEYORS OFFICE  
 T235  
 R S33  
 7  
 W S4 / MC  
 T245  
 1982

New Accessories

11" MYRTLE SCRIBED "T245 R7W S4 MCCSBT" IN DOUBLE BLAZE BEARS  
 S57E 302 FT.

Sketch of Monument, Accessories, and General Area

Location & Comments



NO SCALE

Comp. Declin. 19° E  
 Agency DCSO  
 Party Chief GREG QUIBELL  
 Notekeeper Gregory E. Quibell  
 Witnesses JOHN M. POWELL

*[Signature]*

Surveyor's Seal