

GOVERNMENT CORNER RESTORATION FORM

Township 23 S Range R8W Sec. 4 County DOUGLAS

State OR Date 11-30-81 No. \_\_\_\_\_

Corner Designation

T 23 S R8W

5 | 4  
8 | 9

- Condition Report Only
- Not Found
- Renewed
- Unrecorded
- Surveyed In
- Referenced Out

Previous Renewals #51, REF. CS 59/30

Monument(s) Found: (Condition and Source)

MONUMENT DETAIL

BRASS CAP PER REN #51 REMOVED  
IN CS 59/30

FD. 5/8 IN. IR WITH ALUM. CAP STAMPED  
"BO 2" ALONG WITH PK NAIL IN  
24" FIR FOR A BACKSIGHT PER  
CS 59/30

FD. 5/8" IR WITH ALUM CAP STAMPED "BO 1"  
PER CS 59/30 . PK NAIL IN  
20" FIR FOR BACKSIGHT IS GONE.

THE ABOVE MENTIONED REF. MONS.  
WERE USED TO RE-ESTABLISH COR.  
POSITION FROM WHICH =

Accessories Found:

42" FIR WITH PARTIALLY OPENED SCAR BEARS N67W 25<sup>1</sup> FT.  
AS PER CS 59/30

14" FIR WITH GOOD SCAR BEARS S 18° E 15<sup>1</sup> FT. AS PER  
CS 59/30

10" FIR WITH GOOD SCAR BEARS N64E 5<sup>1</sup> FT AS PER  
CS 59/30

ALL OTHER BT'S MENTIONED IN CS 59/30 WERE  
"TAKEN OUT BY RD. CONST.

Monument Set (Procedure and Description)

Monument Detail

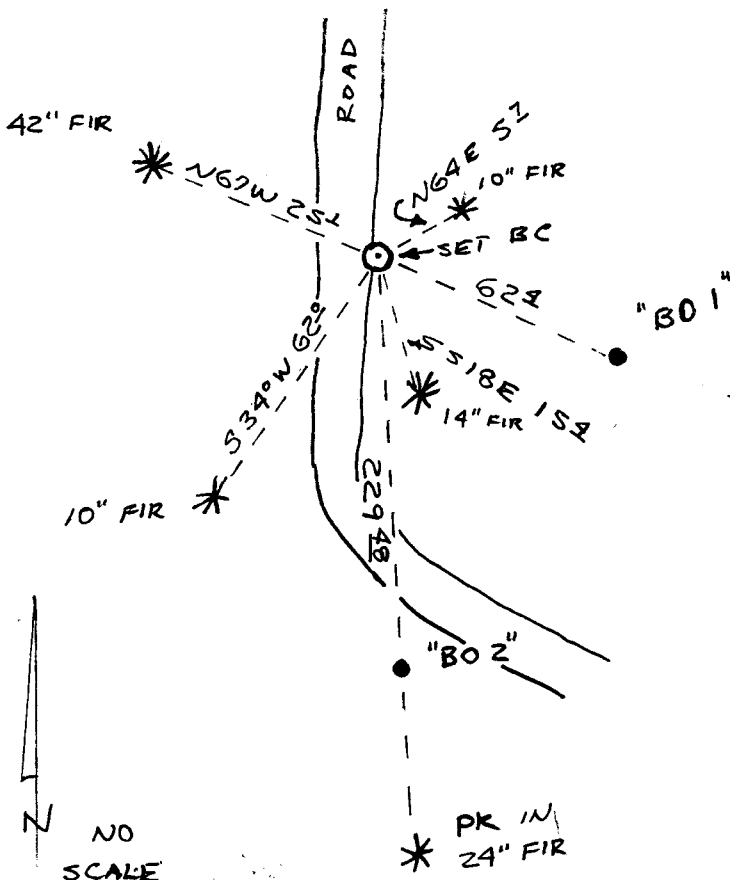
USING REF. MON. "BO2" ALONG  
 WITH ITS BACKSIGHT I ESTABLISH  
 A POSITION AT REC. DIST. PER  
 CS 59/30 (229.48 FT). SINCE "BO1"  
 NO LONGER HAS A BACKSIGHT I  
 CAN'T CHECK LINE FROM IT, BUT  
 DO CONFIRM REC. DIST. PER CS 59/30  
 (622 FT)  
 AT THIS POINT I SET A 1"x30"  
 IP WITH BC ATTACHED, MARKED AS  
 PER DETAIL ON RIGHT  
 SINCE I HIT BEDROCK DOWN ABOUT 12"  
 I BUILD A LARGE MOUND OF  
 DIRT AND STONES APPROX 18" HIGH  
 AROUND BRASS CAP  
 BRASS CAP IS ON EAST SHOULDER  
 OF NEW ROAD

DOUGLAS  
 CO SURVEYOR  
 T235  
 55 | 54  
 58 | 59  
 RBW  
 1981

New Accessories

10" FIR SCRIBED "T235 RBW S8 CS 1ST" IN DOUBLE BLAZE  
 BEARS S 34°W 622 FT.

Sketch of Monument, Accessories, and General Area



Location & Comments

Comp. Declin. 19° E  
 Agency DCSD  
 Party Chief Gregory C. Fairbell  
 Notekeeper GREG QUIBELL  
 Witnesses TERESA BULEY

*[Handwritten Signature]*

Surveyor's Seal

DATE: 9-4-79

T 23 S

S 5 | S 4

S 8 | S 9

R 8 W

Condition Report Only

Not Found

Renewed

Unrecorded

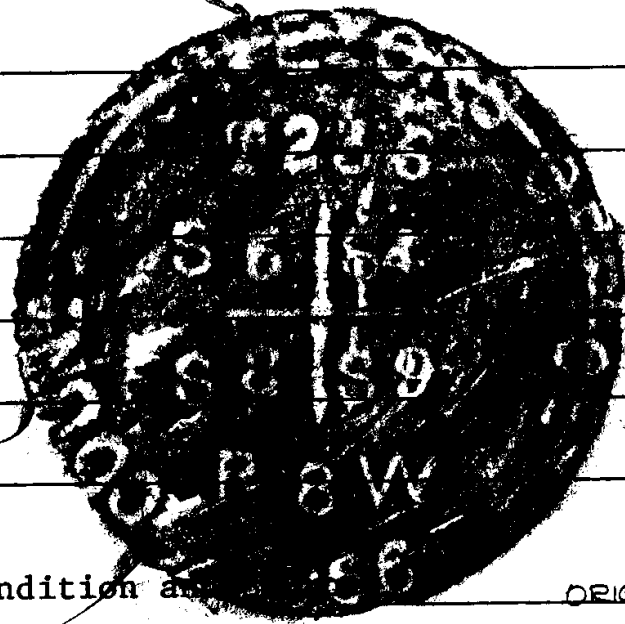
Surveyed In

X Referenced Out

Previous Renewal #'s 51

Monument(s) Found: (Condition and Source) ORIGINAL STONE NOT

FOUND. FOUND 1 INCH DIAM. IRON PIPE (FROM RENEWAL  
NUMBER 51) WITH ATTACHED BRASS CAP STAMPED AS FOLLOWS



Accessories Found: (Condition and Source) ORIGINAL

1) A FIR 24 NOW 42 INCH DIAMETER BEARS N 67° W 25 1/2 FEET

PARTIAL SCEIBING VISABLE OPENED BY TRACY RENEWAL 51.

2) A BADLY DECAYED FIR STUMP BEARS S 21° W 21 3/4 FEET (REC.

S 21° W 19 8/10 FEET) SIZE INDETERMINATE NO SCEIBING FOUND.

3) A BADLY DECAYED FIR STUMP BEARS S 10° E 47 1/2 FEET (REC.

S 10° E 46 2/3 FEET) SIZE INDETERMINATE NO SCEIBING FOUND.

*Ref. noted  
2.8*

C. S. File No. 61/29  
59/30

SHEET  
Page 2 of 2

TREES FROM RENEWAL NO. 51

- 4) A D. FIR 13 NOW 14 INCH DIA. BEARS S 21° W 23° FT. WITH WELL HEALED BLAZE
- 5) A D. FIR 12" NOW 14" BEARS S 18° E 19<sup>3</sup> FEET WITH WELL HEALED BLAZE
- 6) A D. FIR 8" NOW 10" DIA. BEARS N 64° E 5<sup>7</sup> FEET WITH WELL HEALED BLAZE
- 7) A D. FIR NOW DEAD 5" DIA BEARS N 28° W 8<sup>8</sup> FEET SCRIBING PITCHED OVER IN PARTIALLY HEALED BLAZE.

RENEWAL

Monument Set: (Procedure and Description) THIS MONUMENT IS TO  
BE DESTROYED BY NEW ROAD CONSTRUCTION. WE REFERENCE  
THE POSITION AS DETAILED ON SHEET 2. WE REMOVE THE  
BRASS CAP MONUMENT.

New Accessories: (Description) SEE ATTACHED SHEET

Location and Comments:	<u>20° EAST</u>	Compass Declination
	<u>DOUG. Co. SURV. OFF.</u>	Agency
	<u>LARRY E. MONROE</u>	Party Chief
	<u>Jerry E. Monro</u>	Notekeeper
	<u>KAREN REED</u>	Witnesses
	<u>PETE FARLE</u>	
	<u>FRANK SILAGY</u>	

OK  


9-4-79

DETAIL SKETCH TO REFERENCE POSITION

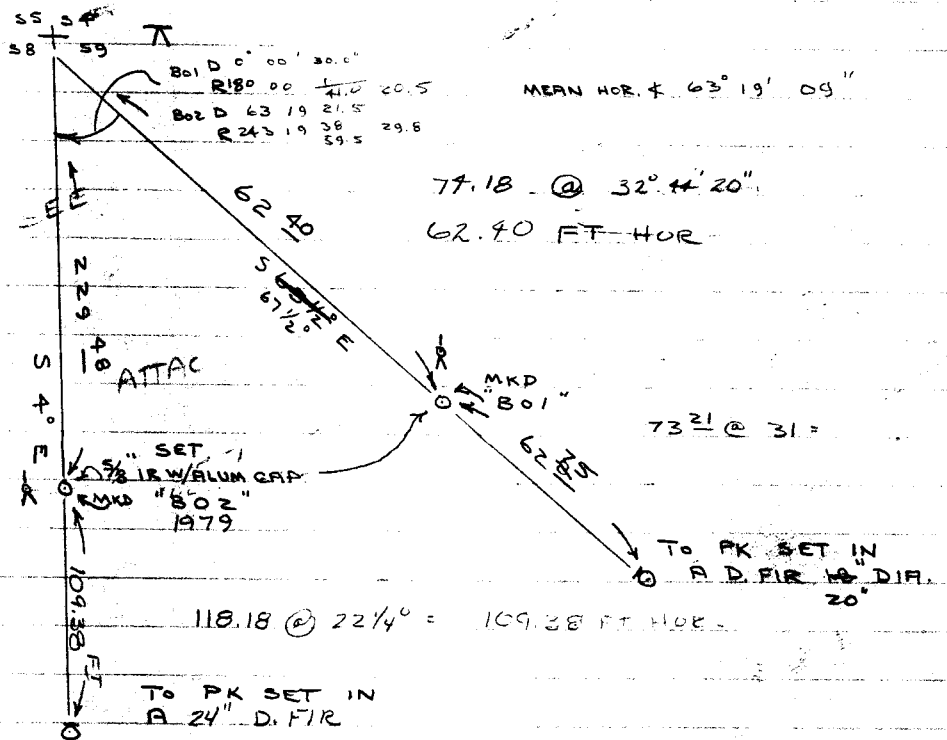
T 23 S R 8 W

- △ LEM
- ∇ FCS
- KR
- PLE

55	54
58	59



NO SCALE



ZEN + TO B02 MEAN 71° 34' 34"

D	71	34	33"
R	288	25	26
	553	59	59

LOC. TO B02  
241.88  
241.86 FT SLOPE

MEAN HOR. + 63° 19' 09"

77.18 @ 32° 44' 20"

62.40 FT HOR

73.21 @ 31°

118.18 @ 22 1/4° = 109.38 FT HOR

TO PK SET IN  
A 24" D. FIR

*M. J. ...*  
1/2