

GOVERNMENT CORNER RESTORATION FORM

Township 28 S Range 3 W Sec. 21 County DOUGLAS

State OR. Date 11-25-81 No. _____

Corner Designation

T 28 S R 3 W
1/4
S 21 | S 22

- Condition Report Only
- Not Found
- Renewed
- Unrecorded
- Surveyed In
- Referenced Out

Previous Renewals #111

MONUMENT DETAIL

Monument(s) Found: (Condition and Source)

FD. APPROX. 6" OF THE FLARE FROM THE BOTTOM OF THE IPI BRASS CAP SET BY DCSSO IN 1962 (REN. #111), BURIED ABOUT 18" IN THE GROUND.

FROM WHICH:

Accessories Found:

FD. ORIG. 36" NOW 41" FIR STUMP WITH METAL COVER BEARS N 83° E 9 1/2 FT. (REC. EAST) WITH BARK SCRIBED "1/4 S 22 BT" VISIBLE.

FD. ORIG. 15" NOW 21" FIR STUMP WITH METAL COVER BEARS N 45° W 24 1/2 FT WITH GOOD SCAR VISIBLE.

#154 ✓

G.S. File No. 61/29-36

RENEWAL

Monument Set (Procedure and Description)

Monument Detail

AT THE LOCATION OF THE REMAINING
PIECE OF PIPE FROM THE MON.
IN REN. #111, WHICH AGREES
CLOSELY WITH THE BEARING & DIST'S
STATED IN REN. #111, I SET A
1" x 30" IP WITH BRASS CAP ATTACHED
PROTRUDING 6" OUT OF GROUND AND
MARKED AS PER DETAIL ON RT.

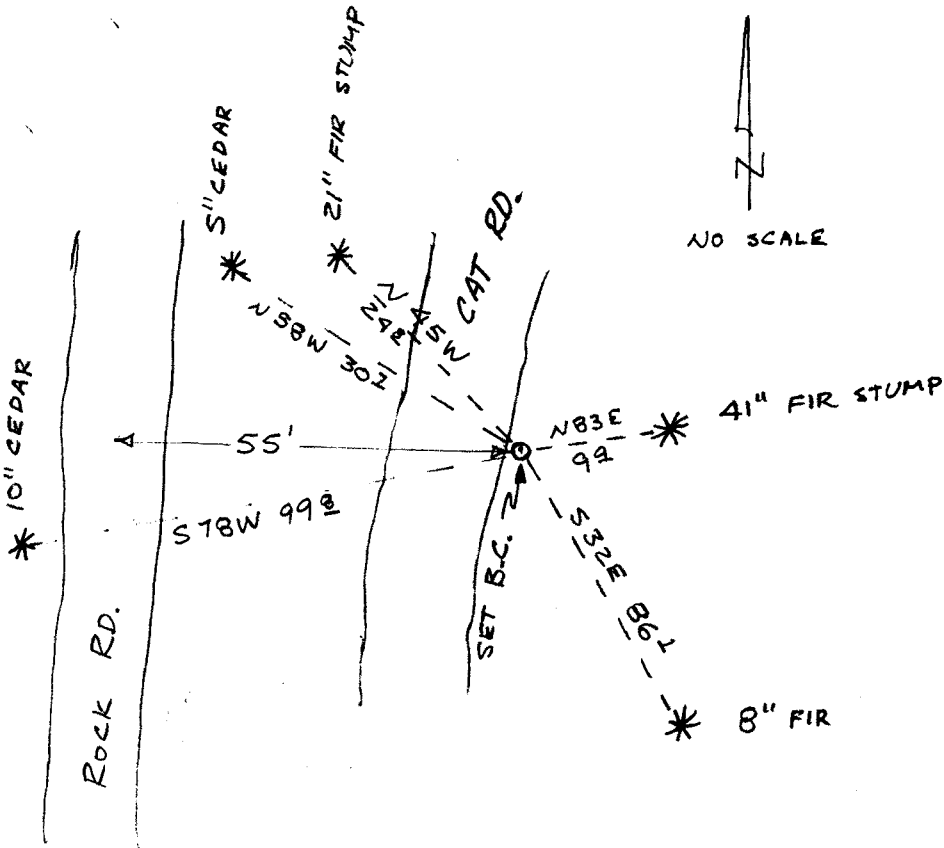
THE FD. PIECE OF PIPE WAS BURIED
WITH NEW MON.

DOUGLAS CO SURVEYOR
T 28 S
1/4
S 21 | S 22
R 3 W
1981

New Accessories

- 10" CEDAR SCRIBED "1/4 S 21 CS BT" IN DOUBLE BLAZE BEARS S 78° W 99⁸ FT.
- 5" CEDAR SCRIBED "1/4 S 21 CS BT" IN DOUBLE BLAZE BEARS N 58° W 30¹ FT.
- 8" FIR SCRIBED "1/4 S 22 CS BT" IN DOUBLE BLAZE BEARS S 32° E 86¹ FT.

Sketch of Monument, Accessories, and General Area



Location & Comments

Comp. Declin. 19° E
 Agency DCSD
 Party Chief Gregory E. Quibell
 Notekeeper GREG QUIBELL
 Witnesses JEAN H. CRAWFORD

[Signature]

Surveyor's Seal