

DATE: 4.29.81

T285 R8W
1/4
S23 | S24

Condition Report Only
 Not Found
 Renewed
 Unrecorded
 Surveyed In
 Referenced Out

Previous Renewal #'s 5, 65, 118, 168 also es file 59/30

Monument(s) Found: (Condition and Source) From renewal #168

a 2 1/2 inch brass cap on a 1inch diam. iron pipe protrudes 13 inches from ground and is firmly set. Cap is marked as follows below:

No evidence of previous monuments is found.

T285 R8W
1/4
S23 | S24
1980
PLS 536

Accessories Found: (Condition and Source) Original bearing trees are searched for and not found. From renewal #5

a White Oak 18" diam. now a dead, rotted and fallen oak snag 18 inches in diam. and 12 feet long lying with lower end in clearly evident rotted root crown.

This tree bears S 39 1/2° W, 217⁵ feet distant (as per record) and has the scribing 1/4 S visible on an

#169 ✓

opened blaze, possibly from rescribing recorded in renewal #65. The other bearing trees from renewals #5 and #65 are searched for but not found. From renewal #118 the southeast bearing tree (only new tree renewal #118)

cont'd pg 2

RENEWAL

Monument Set: (Procedure and Description) see pg. 3

New Accessories: (Description) see pg. 3

Location and Comments:	_____	Compass Declination
	_____	Agency
	_____	Party Chief
	_____	Notekeeper
	_____	Witnesses

DATE: 4.29.81

T285 R8W

1/4

cont'd from pg 1

S23 | S24

- Condition Report Only
- Not Found
- Renewed
- Unrecorded
- Surveyed In
- Referenced Out

Previous Renewal #'s _____

Monument(s) Found: (Condition and Source) _____

Accessories Found: (Condition and Source) (cont'd from pg. 1)

has been removed by quarry road work. From NCSO corner reference file CS 59/30 a 5/8 inch iron rod protruding 10 inches from ground and firmly set bears N88°W, 41⁵ feet distant (record due west, 40 feet distant). Three more ^{5/8 inch} iron rods set in a line running west from above iron rod are found as

recorded. The iron rods set to the Southwest are searched for but not found. From renewal #168 a 7" Maple now an 8 inch d.b.h. Maple bears N54½°W, 518 ft distant (record N50°W, 518 ft) and is scribed "E ¼ S23 BT" on

contd pg 3

RENEWAL

Monument Set: (Procedure and Description) see pg. 3

New Accessories: (Description) see pg. 3

Location and Comments:

Compass Declination
Agency
Party Chief
Notekeeper
Witnesses

DATE: 4.29.81

- Condition Report Only
- Not Found
- Renewed
- Unrecorded
- Surveyed In
- Referenced Out

T285 R8W

1/4

S23 | S24

contd from pg 2

Previous Renewal #'s _____

Monument(s) Found: (Condition and Source) _____

Accessories Found: (Condition and Source) cont'd from pg 2
a partially healed double blaze. And a 13" Myrtle
now a 14 inch d.b.b. Myrtle bears S06°E, 112⁶ feet
distant (record S 4°E, 113⁸ ft.) and is scribed
"N 1/4 S24" on a partially healed double blaze.

RENEWAL

Monument Set: (Procedure and Description) Because bearing and distance to fallen oak from renewal #5 agree with the record and ^{because} this bearing tree was established when evidence of original bearing trees existed the monument location is accepted. Steep terrain near monument may account for discrepancies from records found with other bearing trees.

New Accessories: (Description) _____

Found bearing trees are tagged with new DCSO bearing tree tags

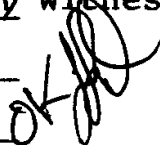
Location and Comments: _____ 19°E _____ Compass Declination

DCSO _____ Agency

Stephen John Flayse _____ Party Chief

Stephen John Flayse _____ Notekeeper

KAREN MOSLEY _____ Witnesses



(Reston)

1/4 COR T 285 R 8 W

Sec 23 & 24 #118

R NEED TO BE REFERENCED
OUT BECAUSE OF QUARRY
STRIPPING OPERATION

BECKLEY & THOMAS

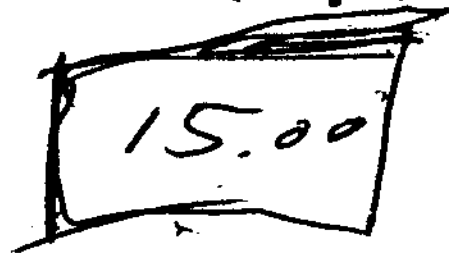
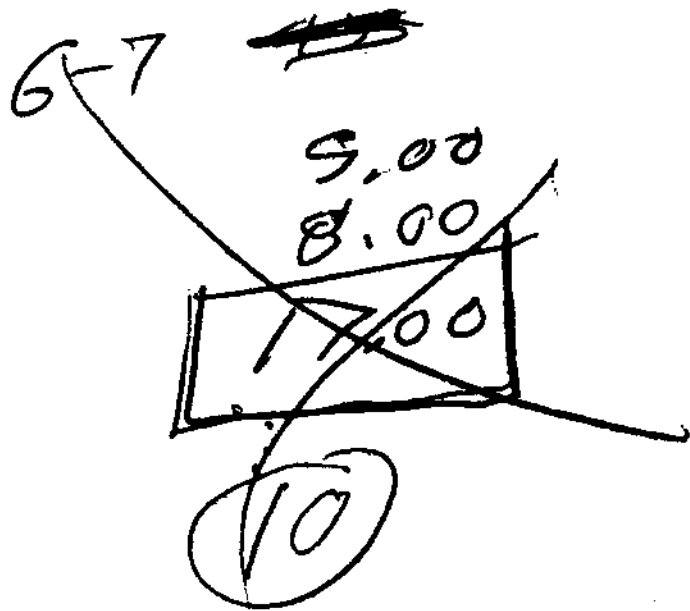
673-4373

~~C.S. File No. 6/119-55~~

CALL WHEN WE KNOW HOW SOON
WE CAN DO THIS

~~C.S. File No. 5/30~~

190



B. Cap — I Rod

(#118)

IN NS Fence (1909)

10" Myrtle S $8\frac{1}{2}$ E 114.1

11/2 approx 175° north of

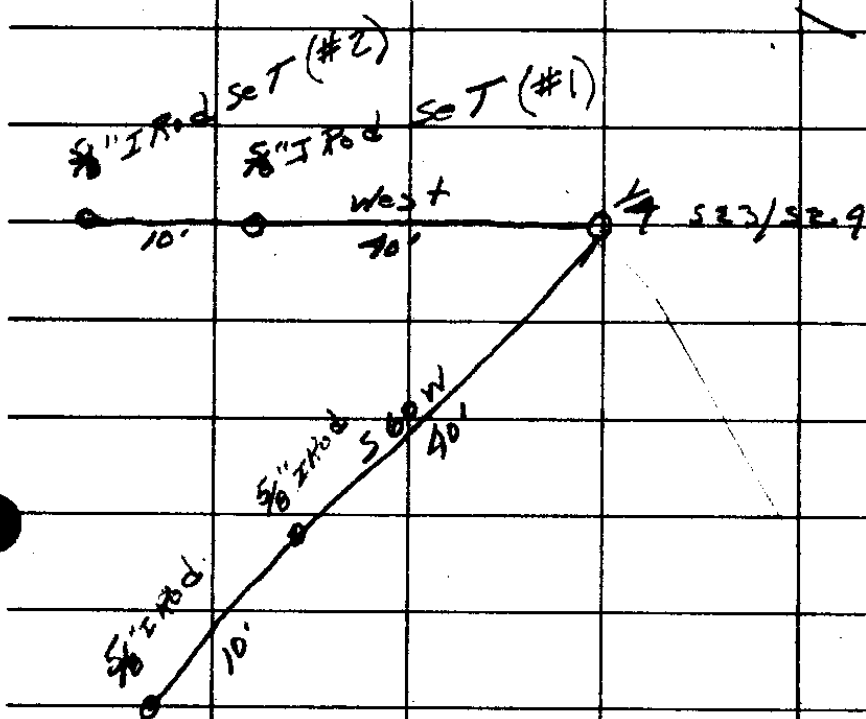
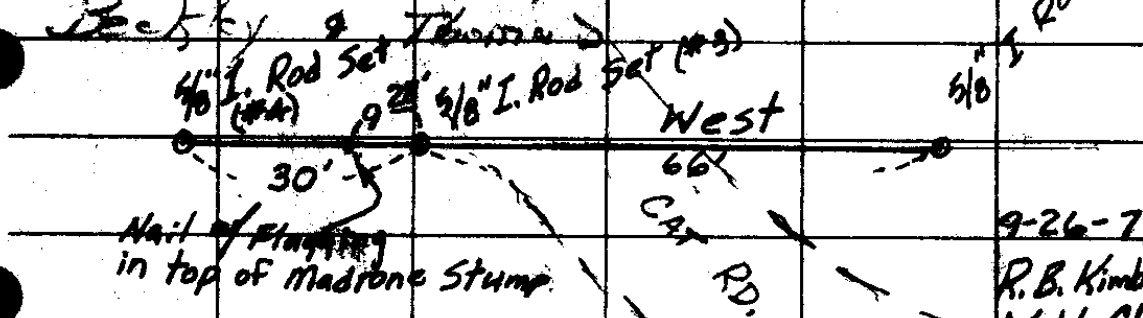
Reston-Terrace Rd.

7235 RBW

S 23 / S 29

Cor Referred out for

Becky & Thomas



Removed Brass cap & tied same to 5/8" I Rod 50W 70'

~~11/19-53~~

11-29-72

~~59/30~~

~~LE 21~~

REF. NOTED.

L.L.