

T 315 R 4 W

DATE: MARCH 30, 1981

1/4 $\frac{S18}{S19}$

Condition Report Only
 Not Found
 Renewed
 Unrecorded
 Surveyed In
 Referenced Out

Previous Renewal #'s 85, 122 ALSO CS FILE 59/30 (CORNERS REFERENCED)

Monument(s) Found: (Condition and Source) ORIGINAL CORNER TREE

MONUMENT NOT FOUND, 1/2" X 40" IRON ROD FROM RENEWAL #85

NOT FOUND, 1" X 36" IRON PIPE WITH BRASS CAP STAMPED COUNTY SURVEYORS

OFFICE T 315 R 4 W 1/4 $\frac{S18}{S19}$ 1966" FOUND REMOVED FROM RENEWAL #122.

CAP HAS BEEN REMOVED FROM CORNER POSITION AND ~~SET~~ PLACED AT A POSITION SAFE

FROM ROAD CONSTRUCTION, AS ROAD CONSTRUCTION HAS BEEN COMPLETED

WE SET A TEMPORARY MARKER AT POSITION OF 1/4 CORNER BY USING

REFERENCES AS NOTED ~~ON~~ IN CS FILE ~~59/30~~ AND CHECK FOR

BEARING TREES AS FOLLOW

Accessories Found: (Condition and Source) ORIGINAL¹⁾ 14" FIR N34°W 11⁰

FEET IS DOWN, HAS PARTIALLY HEALED DOUBLE BLAZE. ORIGINAL SW BT NOT FOUND

REN. #85²⁾ A CEDAR 8 NOW 14" DIA. WITH PARTIALLY HEALED DOUBLE BLAZE BEARS

N 68°E 22° FT ~~TO FACE~~ (BEARING OK TO FACE) BASE OF TREE BEARS

N 72 1/2° E 22° FEET. NO OTHER TREES FOUND FROM THIS RENEWAL.

REN. #122³⁾ A D. FIR 40" DIA BEARS N 88°W 78³ FEET (REC. WEST 80² FT)

TREE HAS WELL HEALED DOUBLE BLAZE.

#167 ✓

RENEWAL

Monument Set: (Procedure and Description) AS THE CORNER POSITION
NOW FALLS ON NORTH CUTBANK OF ROAD WE BUILT STONE WALL AROUND
BASE OF CORNER POSITION 5 1/2 FEET LONG 3 FEET HIGH. ALSO THE BANK ABOVE
CORNER IS TERRACED AND ROCKS SET IN TO STOP EROSION. SET FOUND BRASS
CAP AT CORNER POSITION AND STAMP "RESET 1981".

New Accessories: (Description)

- 8" DIA I CEDAR BEARS N 40° W 178 FEET, DOUBLE BLAZED, SCRIBED "4518 CS ET"
- 11" DIA D FIR BLAZE N 1 1/2° E 398 FEET, DOUBLE BLAZED, SCRIBED "4518 CS BT"
- 12" DIA I CEDAR BEARS S 61 1/2° E 1172 FT, DOUBLE BLAZED, SCRIBED "4519 CS BT"

Location and Comments:

OTHER
NO TREES AVAILABLE
IN SECTION 9 FOR
SCRIBING

19° EAST

DCSO

LARRY E. MONREAN

Larry E. Monrean

TERRIE R. PLOUFF

Compass Declination

Agency

Party Chief

Notekeeper

Witnesses

OK
[Signature]

REFERENCE $\frac{1}{4}$ COR $\frac{18}{19}$ T315 R4N

FOUND 1" IRON PIPE WITH BRASS CAP
SET 18" ABOVE GROUND, MARKED

COUNTY SURVEYORS OFFICE

T315 R4N

$\frac{1}{4}$ S19

$\frac{1}{4}$ S19

1966

WITH A 1" BAR (STEEL WITH EYE AT
TOP) AT NORTH EDGE.

OBT'S: A 11" NOW 12" DIA. FIR SNAG, 30 FT
HIGH, BEARS S19 1/4° W 6 1/2 FT., WITH
A WELL HEALED DOUBLE BLAZE.

A 14" NOW 15" DIA. FIR IS UPROOTED,
ORIGINAL POSITION APPROX. N34° W
11 1/2 FT., WITH A WELL HEALED BLAZE.

REN. #85 A 8" NOW 9" DIA. CEDAR IS UPROOTED,
(UNABLE TO TELL ORIGINAL POSITION) WITH
VISIBLE SCRIBING "1/4 S19 BT" IN A
DOUBLE BLAZE.

DIA.

A 14" NOW 16" MADRONE (LAUREL) STUMP
BEARS S46° W 19 1/2 FT. WITH VISIBLE
SCRIBING IN PARTIALLY HEALED BLAZE.

A 8" NOW 12" DIA. CEDAR BEARS N68° E
20 1/2 FT. (REC. 22 1/2 FT. IS GOOD TO FACE
OF BLAZE OF CROOKED TREE) WITH VISIBLE
SCRIBING IN ALMOST HEALED BLAZE.
DOUBLE

REN. #122 A 40" DIA. D. FIR BEARS N87° W
78 1/2 FT. (REC. WEST 80° FT.) WITH VISIBLE
SCRIBING "CS" IN PARTIALLY HEALED
DOUBLE BLAZE.

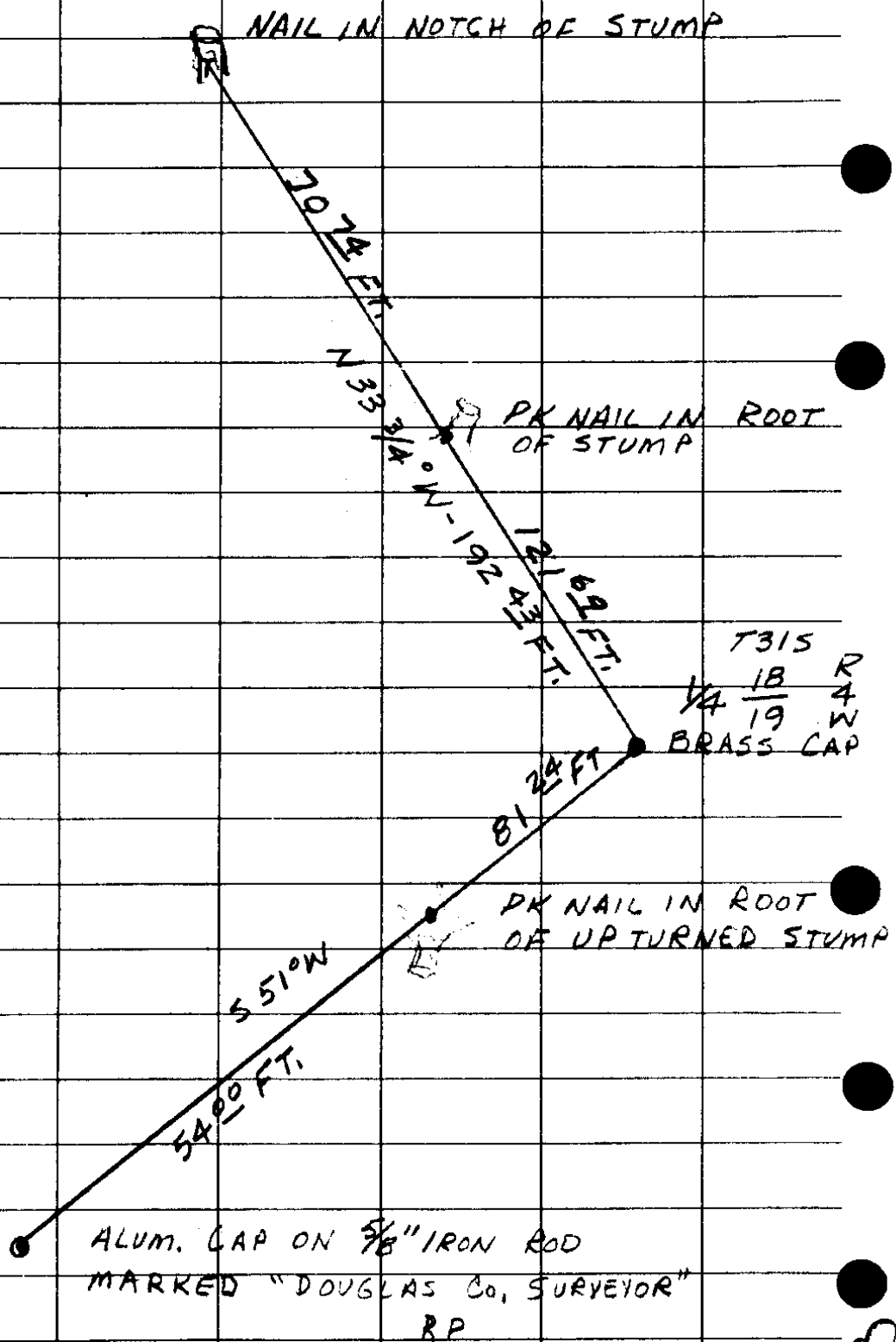
DIETZGEN NO. 385-6

✓ J.L.

6/19-67

G. S. File No. ~~385-6~~

REFERENCED $\frac{1}{4}$ COR $\frac{518}{519}$ T315 RAW



(P.L. EARLE)

1-30-78

OK *[Signature]*
R.P. Kimbrell