

DATE: Aug 25, 1980

Condition Report Only
 Not Found
 Renewed
 Unrecorded
 Surveyed In
 Referenced Out

T265 K4W

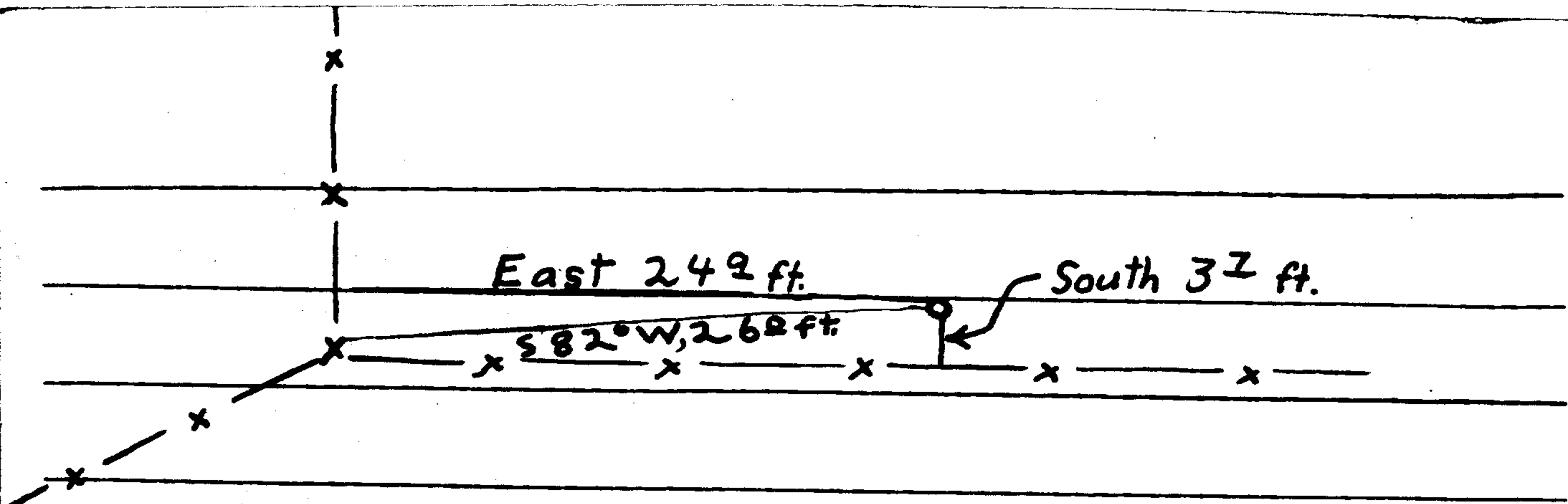
$\frac{1}{4}$ $\frac{530}{531}$

Previous Renewal #'s none, possible reference to monument
in DCSO records Vol ~~84~~ 84, Sunshine Ranch PLATA
Monument(s) Found: (Condition and Source) _____

A 1" (inside diam) by 28" long iron pipe firmly set and protruding 10" from ground. (were able to remove pipe to check length, then replace in same hole).

According to Wade survey M83-72 this found iron pipe is very close to expected position for $\frac{1}{4}$ corner. Although the record is unclear the Sunshine Ranch PLATA map may be recording this monument as a $\frac{3}{4}$ " x 12" iron pipe. ^{Vol 84} ^{Plat 4}

Accessories Found: (Condition and Source) A fence corner
from which random fence lines run $S45^{\circ}W$, North, and East bears $S82^{\circ}W, 26^{\circ}$ ft. from the monument. The monument is 3° ft. North of the random East fence line. The monument is 24° ft. East of the random North fence line. (see sketch, over)



RENEWAL

Monument Set: (Procedure and Description) _____

New Accessories: (Description) _____

Location and Comments: _____ 17° E _____ Compass Declination
 _____ DCSO _____ Agency
Deputy Stephen John Flause _____ Party Chief
Stephen John Flause _____ Notekeeper
Bill Stewart _____ Witnesses

OKD