

T 215

1/4 529/528

R4W

DATE: 3/3/80

- Condition Report Only
- Not Found
- Renewed
- Unrecorded
- Surveyed In
- Referenced Out

Previous Renewal #'s — corners proportioned in by surveys M 79-7 and M 82-14  
 Monument(s) Found: (Condition and Source) 5/8" I.R. protruding approximately 0.5 ft from ground, set by BHW Engineering and Surveying, Inc. as according to survey filed under DCSO file M 79-7. From this iron rod bears N 21° E, 3.3 ft another 5/8" I.R. protruding approx 0.5 ft from ground set by Eimstad and Associates as according to DCSO survey file M 82-14.

Accessories Found: (Condition and Source) For rod set in survey M 79-7 we find a 24" cedar, which bears N 56° E, 4.2 ft. (as per record) scribed "1/4 529 BT"; and a 12" Hemlock S 76° W, 6.5 ft (record S 66° W, 6.2 ft) scribed "1/4 528 BT".  
 For rod set in Survey M 82-14 we find an 8" fir N 26° E, 14.7 ft (as per record) scribed "W 1/4 528 BT";

(SEE REN. # 122) ✓

and a 16" fir bears N 46° W, 17<sup>25</sup> ft (as per record)  
scribed "E 1/4 S28 BT".

RENEWAL (see sketch)

Monument Set: (Procedure and Description) We check creek  
calls of original notes <sup>by measuring</sup> from 5/8" IR set in survey  
M 79-7 and assuming no great change of stream beds  
we find stream to south at 35<sup>25</sup> chains to be 58<sup>2</sup>

feet to distant and stream to north at 47 chains to be  
23 ft to close. Checking stream convergence and computing  
using original distances we mark a temporary position  
New Accessories: (Description) for 1/4 corner with a Flagged  
(See sketch) nail.

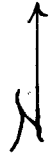
From our flagged nail a fence corner (described  
by property owner Goins as long having marked  
1/4 corners approximate position) with <sup>old</sup> fences running  
North-South and East and a new fence running slightly  
north of East bears S 54° W, 4<sup>8</sup> ft; and a once scribed  
tree, now a badly rotted stump (as identify by property owner Goins)

Location and Comments:	19°E	Compass Declination
which is possibly	DCSO	Agency
35" Hemlock stump	Dept. Stephen John Flouse	Party Chief
mentioned by	Ed Monrean	Notekeeper
Byron in CS file # 49/68	Terry Plouff	Witnesses
bears N 79 1/2° E, 44 <sup>8</sup> ft.	Shawn Means	

1213  
 1/4 S29 | S28  
 R4W

Field work 3/3/80  
 (no scale)

Stream S75°W  
 N67°E  
 stream



462.8 ft NORTH  
 457.2 ft

BHW Iron Rod

(Computing from convergence of streams we find position for 1/4 cor.)

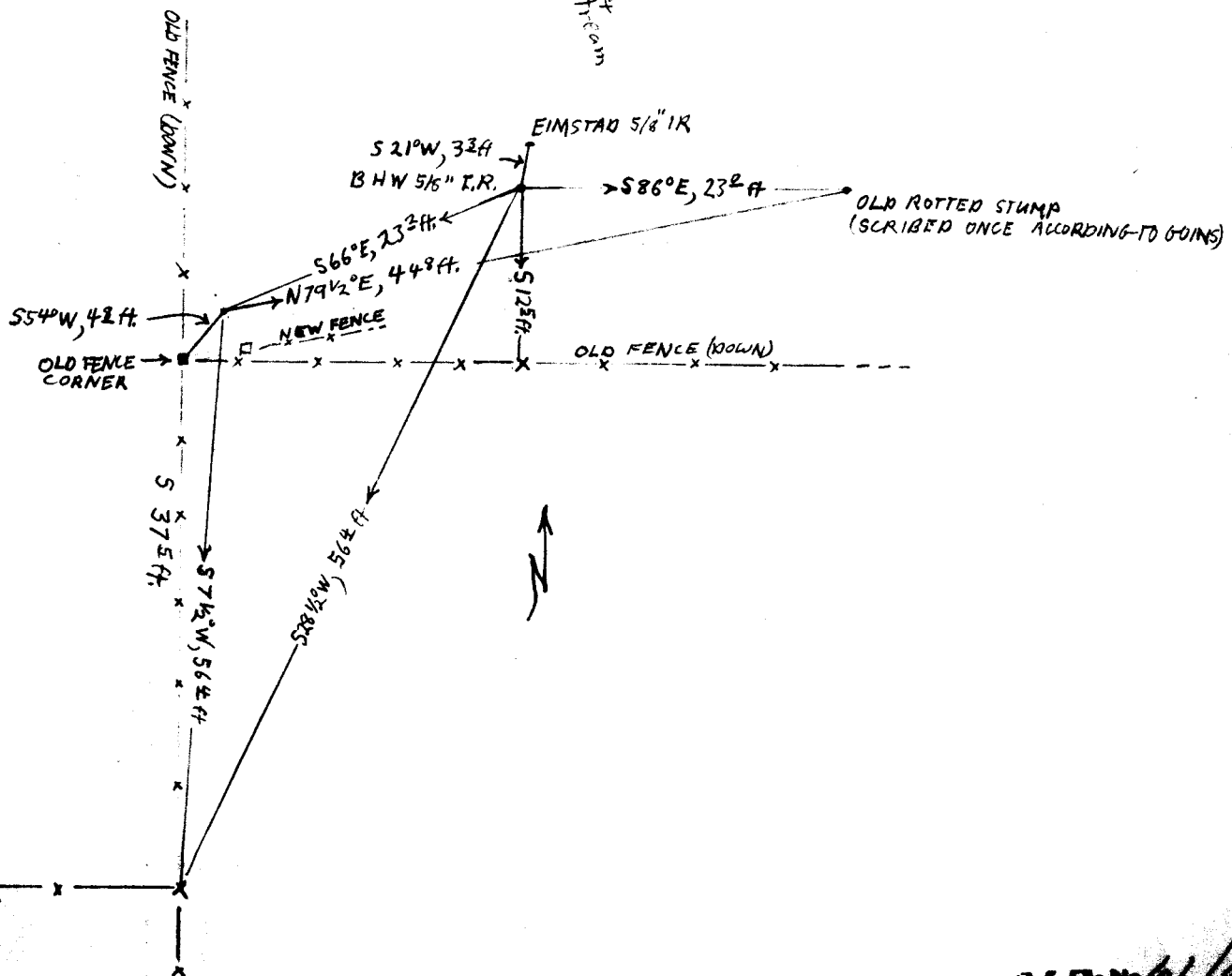
S65.86°W 23.23 ft

(- N9.54. - E 21.2 ft.)  
 components of difference of original 1/4 cor position and BHW 5/8 I.R.

313.5 ft  
 378.2 ft  
 100 ft stream

S42°E 49.4 ft

S13°E 100 ft stream





EXISTED

SECTION COENER  
1/4 Sec 29  
1329  
1/4" pipe & bearing  
in evidence

85 5/8 E

589° 52' 45" E  
132521

525980  
131497

N0° 02' 29" E

#122

132103  
PROPORTIONED  
1/4 COENER SECTIONS 29 & 28  
Set 3/4" re-bar  
16" fir N 46° W 17.95 1/4 S. 29 BT  
8" fir N 26° E 14.3 1/4 S. 28 BT

TYPE

262985

