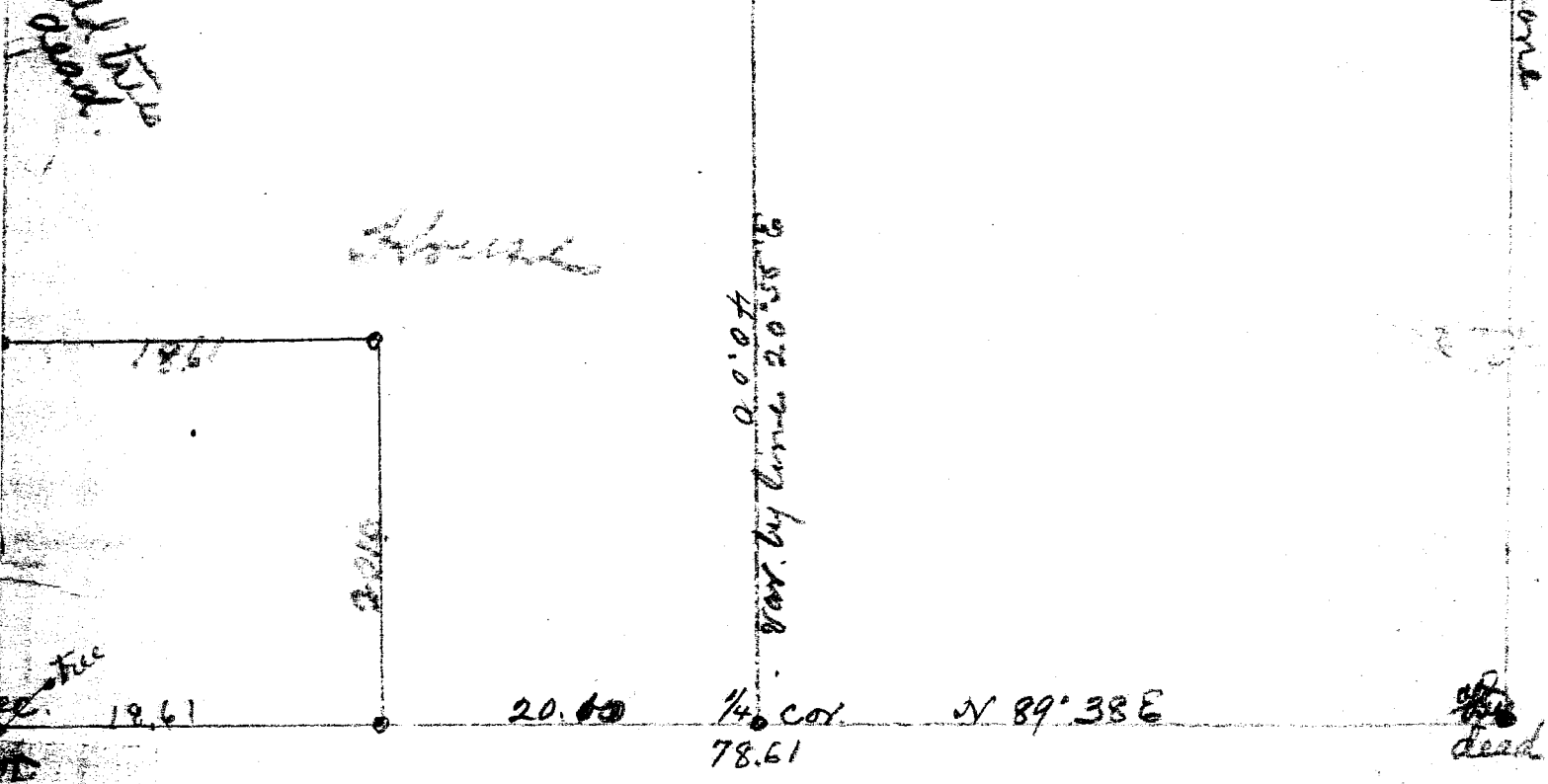


James Krueger Tp. 23 S R 5 W 11-22-23 1938
 20.00 1993 1993



Begin at the center of sec 6 cedar post in place marked a wh. oak 4' 8" W. 5 Run west from cor Nov 21 to 20.00 old stake S. of line 19.10 to 1/4 cor old fence post in place. mark on bed stump found. The tree falls south from cor. acc 5.00 very steep desc. 15.00 top 20.00 top cor. 25.00 top desc.

Begin at the 1/4 cor. of S. side of 6 ac. old cedar corner in place. old tree standing. Run West with top 21 1/2 15.80 top of ridge E 8 E. 70 W. stake desc 20.10 to 50' for cor. marked 1/4 S. B.T. corner stands W slope of ridge to S. of old blazed line. North from corner to top of ridge E 8 W. 20.10 dog wood post marked in wood 8" S W. 20 maple 15 S 27 E. 12. Run from corner steep asc 1.40 top of ridge. desc 18.61 to old land of line. S. of maple post only marked maple 1/2 N 19 for 24 S 1 1/2 E. 47. At this corner marked S. of camp peg 90. 90 70 27 20.00