

DATE: 9-20-79

T 215

S1
S12

R10W

Condition Report Only
 Not Found
 Renewed
 Unrecorded
 Surveyed In
 Referenced Out

Previous Renewal #'s 32, 1919 RESURVEY

Monument(s) Found: (Condition and Source) FOUND DISTURBED, A 1 1/2 INCH
DIAMETER IRON PIPE FILLED WITH CONCRETE, LEANING, WITH UPPER 1 FOOT
WITH ATTACHED BRASS CAP RUSTED OFF AND LYING ALONG SIDE MONUMENT.

CAP IS STAMPED " T 215 "

S1
S12

 R10W
 1919

THIS MONUMENT IS LOCATED IN AN AREA WHERE OLD CAT WORK HAS
 DISLODGED BOULDERS AND CAUSED THE GROUND TO SHIFT AND SLIDE.

TREES FROM 1919 RESURVEY

Accessories Found: (Condition and Source) 1) A D.FIR 36 NOW 48 INCH DIAMETER
BEARS N 10° W 24.4 FEET (MEASURED 24.6 FEET AT -8° SLOPE) THE 1919 RECORD SHOWS TREE
BEARING N 10° W 43 LINKS OR 28 1/2 FEET. WE PARTIALLY OPEN WELL HEALED BLAZE

AND FIND SCRIBING " S1 B " . 2) A DEAD, LEANING, FIR SNAG WITH APPROXIMATELY
10 FEET OF BOTTOM COVERED BY SLIDE. WE ARE NOT ABLE TO DETERMINE
THE CENTER OF THE BASE OF THE TREE NOR CAN WE LOCATE A BLAZE
OR SCRIBING. THE TREE HAS A B.L.M. BEARING TREE TAG INDICATING

#50 X

SHEET Page 1 of 2

C.S. File No. 60/34 -14 C

THAT IT BEARS S 33° W 42² FEET. POWELL INDICATED THAT THE TREE

FIT RECORD BEARING AND DISTANCE AND THAT IT WAS LOCATED ON TOP OF RIDGE

AND WOULD BE TAKEN OUT BY NEW ROAD IN HIS RENEWAL NUMBER 32. WE FIND

THE TREE TO BEAR S 74 1/2° W 43² FEET, AND THAT 43 FEET NORTH OF THE RIDGE AND 31 FEET LOWER THAN RIDGE. ALL BEARINGS AND DISTANCES TAKEN TO PORTION OF TREE VISIBLE ABOVE SLIDE MATERIAL.

3) (RENEWAL NO. 32) A D. FIR 17 NOW 24 INCH DIAMETER BEARS N 57 3/4° E 39 3/4 FEET (REC. N 59 1/2° E 40 3/4 FT) RENEWAL TREE HAS WELL HEALED BLAZE.

Monument Set: (Procedure and Description) THIS MONUMENT IS TO BE DESTROYED

BY A LOGGING LANDING CONSTRUCTION. AS ~~X~~ THE MONUMENT HAS BEEN DISTURBED WE SET A PK

NAIL IN STONE AT THE RECORD BEARING AND DISTANCE ^V OF THE TRUE CORNER POSITION FROM THE 1919 36 NOW 48 INCH DIAM.

D. FIR BEARING N 10° W 28 1/4 FEET AS DESCRIBED IN ACCESSORIES FOUND NO. 1. FROM WHICH

THE DISTURBED 1919 MONUMENT BEARS N 8° W 4⁰ FEET.

New Accessories: (Description) AS THE CONSTRUCTION WILL DESTROY

THE CORNER MONUMENT AND ANY NEARBY ACCESSORIES, WE REFERENCE

THE PK NAIL AT THE TRUE CORNER POSITION AS RECORDED ON FOLLOWING

SHEET.

Location and Comments: 19° EAST Compass Declination

DOUGLAS COUNTY SURVEYORS OFFICE Agency

LARRY E. MONROE Party Chief

Jerry L. Monahan Notekeeper

PETER L. EARLE Witnesses

FRANK SILAGY

OK
[Signature]

TO REFERENCE

T 21 S

9-20-79

S 1

L. E. MONHEAN

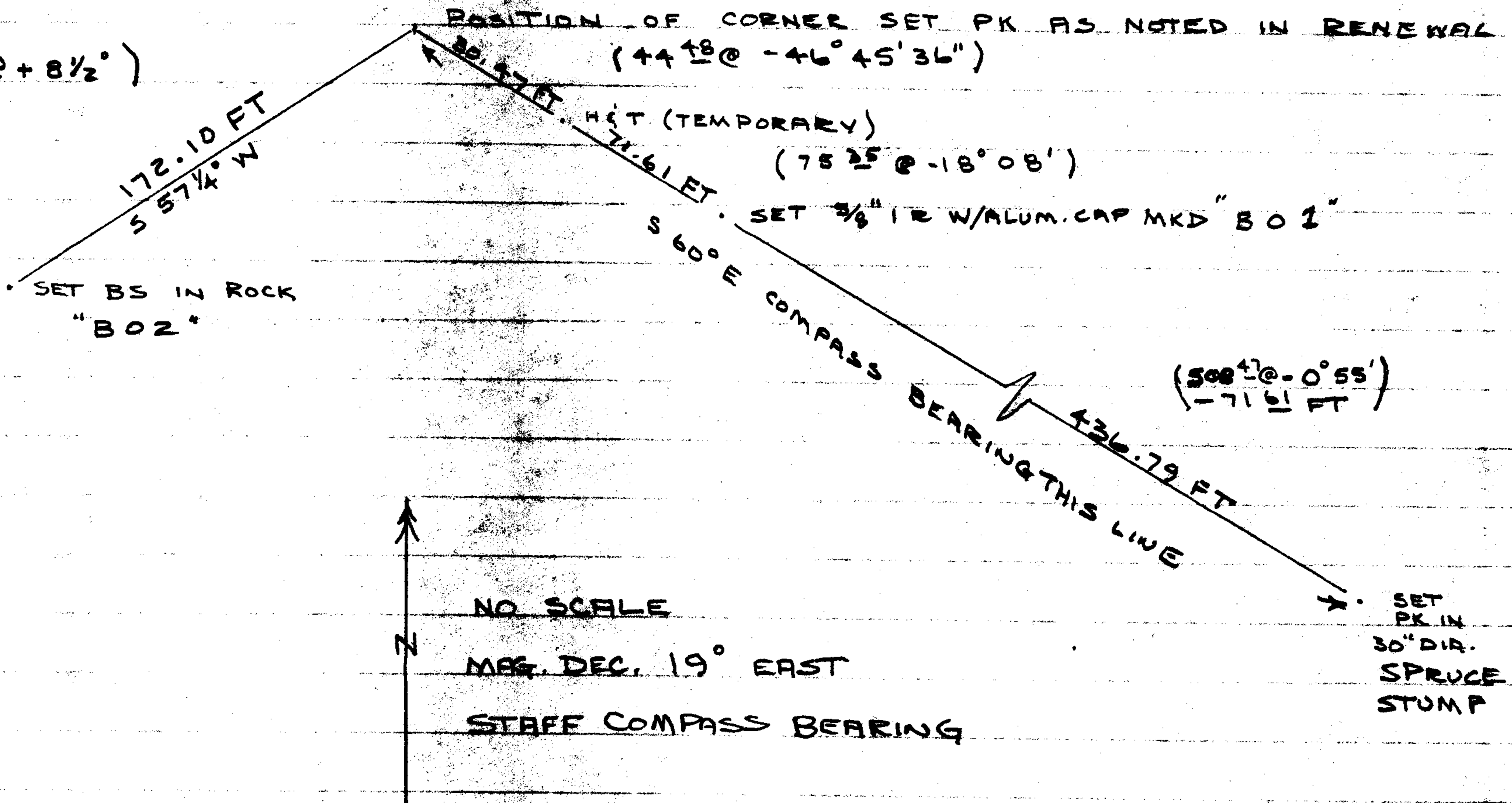
S 12

P. L. EARLE

F. C. SILAGY

R 10 W

(174' @ +8 1/2°)



#50