

COUNTY SURVEYORS FILE DATE  
DO NOT REMOVE FROM OFFICE

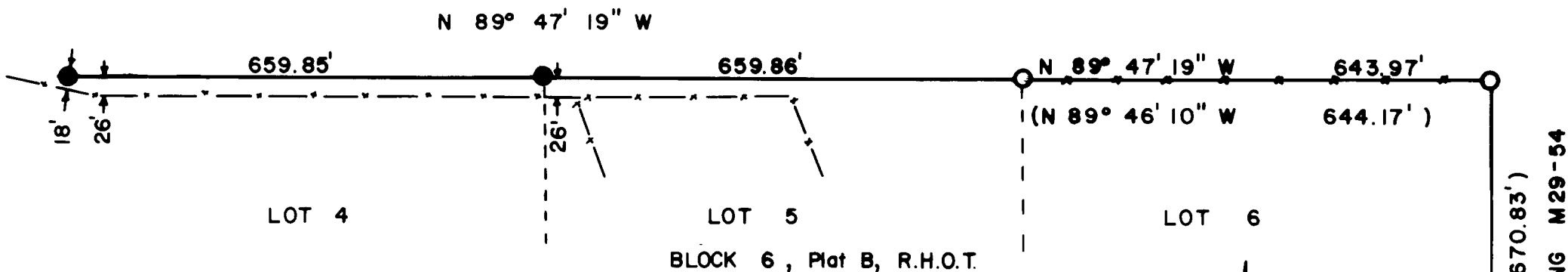
FILED *d*  
RECEIVED *dh*

APR 16 1979

COUNTY SURVEYOR  
DOUGLAS COUNTY, ORE  
*uw*

NOTE: This Survey is a Retracement  
of Part of M 29 - 54.

- Fd. 3/4" I.R.
- Set 5/8" I.R.
- ( ) Record



SURVEY FOR DOUGLAS COUNTY PARKS DEPT.  
IN

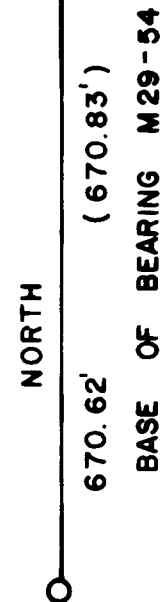
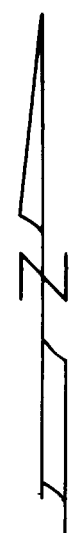
SEC. 32, T. 26 S., R. 6 W., W.M.

SURVEYED BY DOUGLAS CO. SURVEYOR'S OFFICE

FRANCIS L. INGRAM      COUNTY SURVEYOR

APRIL 1979

SCALE 1" = 200'



REGISTERED  
PROFESSIONAL  
LAND SURVEYOR

*Francis L. Ingram*

OREGON  
JULY 11, 1969  
FRANCIS L. INGRAM  
902

C.S. File No. *60/27*

CS FILE FOLDER

CONTAINS

MORE

INFORMATION