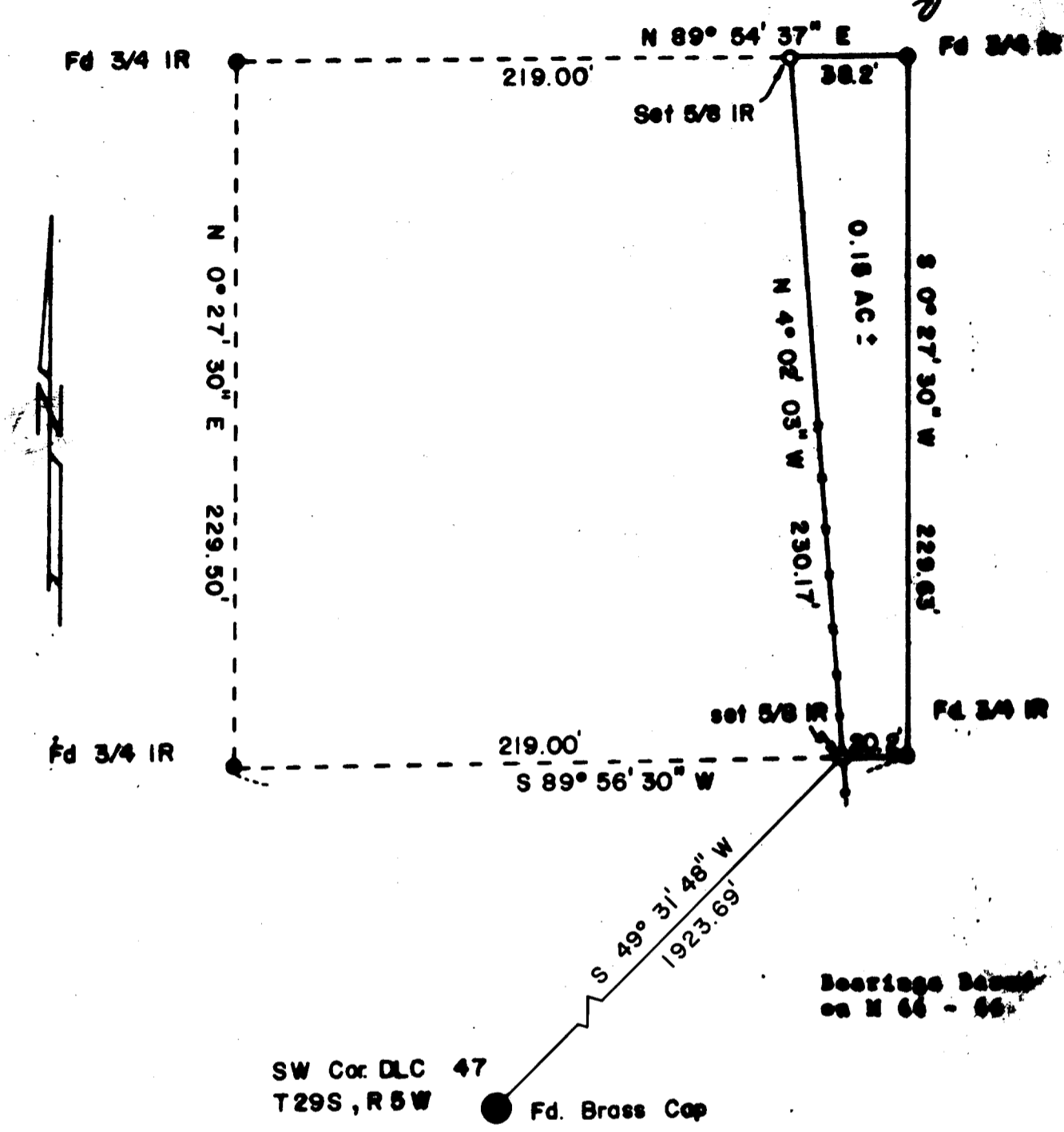


RECEIVED *DK*

MAR 8 1979

COUNTY SURVEYORS FILE DATA
DO NOT REMOVE FROM OFFICE

COUNTY SURVEYOR
DOUGLAS COUNTY, OREGON



SURVEY FOR CHARLES BURNETT
 SECTION 26, T.29S. R.5W. N.M.
 SURVEY BY DOUGLAS COUNTY SURVEYOR'S OFFICE
 FRANCIS L. INGRAM, COUNTY SURVEYOR
 MARCH 1979 SCALE 1"=50'

REGISTERED
 PROFESSIONAL
 LAND SURVEYOR

Francis L. Ingram

OREGON
 JULY 11, 1969
 FRANCIS L. INGRAM
 902

CS FILE FOLDER

CONTAINS

MORE

INFORMATION