

DATE: 4-18-79

NW COR. DLC 42 AND  
A WIT. COR. TO NW  
COR DLC 42 T265 R6W

Condition Report Only  
 Not Found  
 Renewed  
 Unrecorded  
 Surveyed In  
 Referenced Out

\* SEE ATTACHED SKETCH

Previous Renewal #'s 19, 61, 124

Monument(s) Found: (Condition and Source) A 1" x 3/8" I. PIPE WITH  
BRASS CAP MARKED "COUNTY SURVEYORS OFFICE"  
T265  
R6W

LEANING AGAINST SE BT.

NW DLC 42
-----------------

(REN 124)  
1964

I DO NOT FIND 1954 B.C (REN 61) OR A 1 1/2" I. PIPE,  
(REN 19)

Accessories Found: (Condition and Source) \_\_\_\_\_

A 24" B. OAK, NOW 26", BEARS S. 24° W., 75.7 FT  
WITH WELL HEALED DOUBLE BLAZE (REN 61)

A 20" B OAK BEARS S. 15° E., 30.5 FT WITH WELL  
HEALED DOUBLE BLAZE. (REN 124)

A N. S. FENCE BEARS WEST, 39° FT. (REN 124  
DIST 40° FT)

#180 X

RENEWAL

Monument Set: (Procedure and Description) 5/8" x 30" I. ROD WITH

ALUM. CAP MARKED " DOUGLAS COUNTY SURVEYOR "

NW DCC 42 1979

AT PROPER BEGS & DIST FROM FD BTS - BURIED 6"

BELOW SURFACE. 1" x 36" I. PIPE WITH BRASS CAP MARKED

" COUNTY SURVEYOR'S OFFICE " SET WEST, 30' FT. FROM

T26S  
R6W

New Accessories: (Description) I. ROD

WC  
EAST 30 FT  
NW  
DCC 42  
1979

20" B.O.N.K (REN 124) BEARS S 54° E, 48' FT FROM

WIT. COR.

Location and Comments: 19° EAST Compass Declination

COR FALLS IN GRAVEL  
DRIVE.

DCCG

Agency

KAREN REED

Party Chief

Karen Reed

Notekeeper

P.L. EAKLE

Witnesses

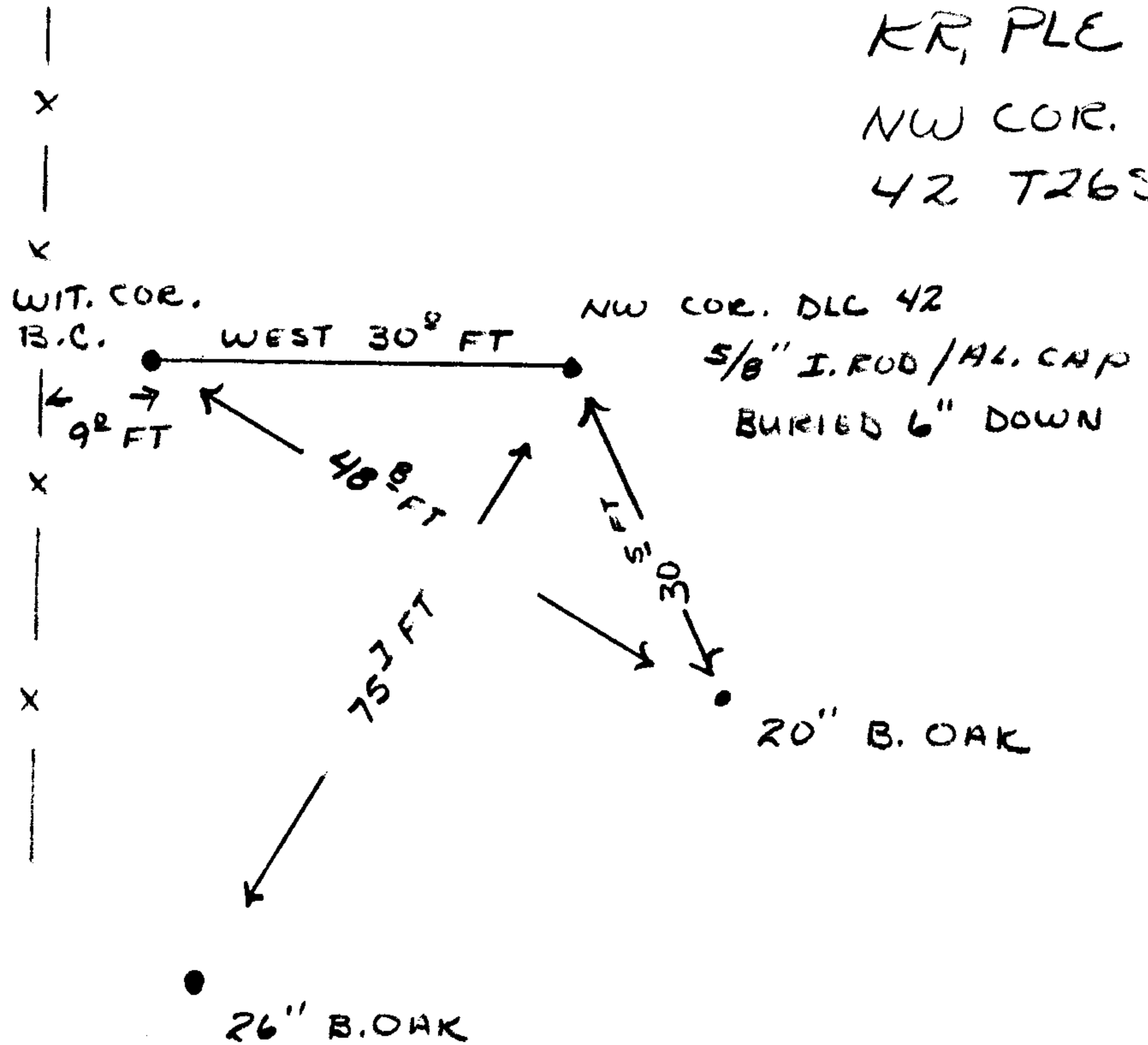
*OK [Signature]*

4-18-79

KR, PLE

NW COR. DLC

42 T26S R6W



C.S. 60/24