

DLC 45 | T 29 S R 5 W  
| SW COR DLC 47  
| EXT. L DLC 46

IN SEC. 26

DATE: 3-6-79

Condition Report Only  
 Not Found  
 Renewed  
 Unrecorded  
 Surveyed In  
 Referenced Out

Previous Renewal #'s 38 SEE ALSO \*964\* 150 CS 40/5 M 11-39 M 23-35 M 54-8 M 66-66  
CS 40/1

Monument(s) Found: (Condition and Source) NO MONUMENT FOUND. FOUND HOLE

IN GROUND BELIEVE THIS TO BE POSITION OF BYRON'S 1962

MONUMENT AS IT WAS REPORTED FOUND BY RUPPERT IN 1977 ON

M 66-66 (SEC 129A)

Accessories Found: (Condition and Source) ORIGINAL 14" BLACK OAK

BEARS N 65° E 153 ± FEET (REC. 151 ± FT.) TREE NOW A 26" DIAMETER

WITH BOTTED CENTER WITH PARTIALLY HEALED PREVIOUSLY OPENED BLAZE. FOUND

REVERSE SCRIP MARK "B" WHICH WE REPLACED IN BOTTED OUT

CENTER OF TREE. BEARING TREE PER RENEWAL #38 A

14 INCH NOW 15 INCH TRUNK OF FORKED WHITE OAK MEASURING

12" x 28" AT BASE BEARS S 71 1/2° E 85 ± FEET (REC. S 70 3/4° E)

SHEET  
Page 1 of 1

#198 ✓  
C.S. File No. 60/29-14 C

TREE HAS FAINT DOUBLE BLAZE.

NOTE: FD. BRASS CAP AT LOCATION AS DETERMINED BY BYRON 1962

(OF DCSO RECORDS M 23 35 PEN. # 150) BEARS N 80 1/2° W 113 1/4 FT BYRON RECORDS N 80 1/2° W 113 1/4 FT AND ORIGINAL RECORDS SHOW CORNER AT N 82 1/2° W 113 1/4 FT. CAP TO 1/4 S 27 | S 26.

RENEWAL

Monument Set: (Procedure and Description) WE SET A 1" X 30" GAL.

ABOVE

IRON PIPE WITH ATTACHED BRASS CAP AT RECORDED POSITION. CAP IS

DOUGLAS CO. SURVEYOR

MARKED

T 29 S R 5 W

DLC 45

DLC 47

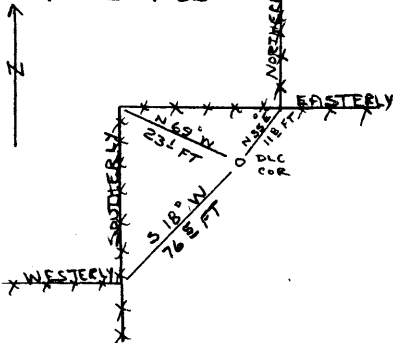
DLC 46

1979

SET CAP FLUSH WITH GROUND, MOUND STONE AROUND 2 1/2 FOOT DIAMETER AT BASE 1/2 FOOT ABOVE GROUND.

New Accessories: (Description)

Location and Comments:



20° EAST

DOUG. CO. SURV. OFF.

GARY L. LANGLITZ

LARRY E. MONREAN

LARRY E. MONREAN

F. C. SILAGY

S. J. FLAUSE

Compass Declination

Agency

Party Chief

Notekeeper

Witnesses

*OK [Signature]*