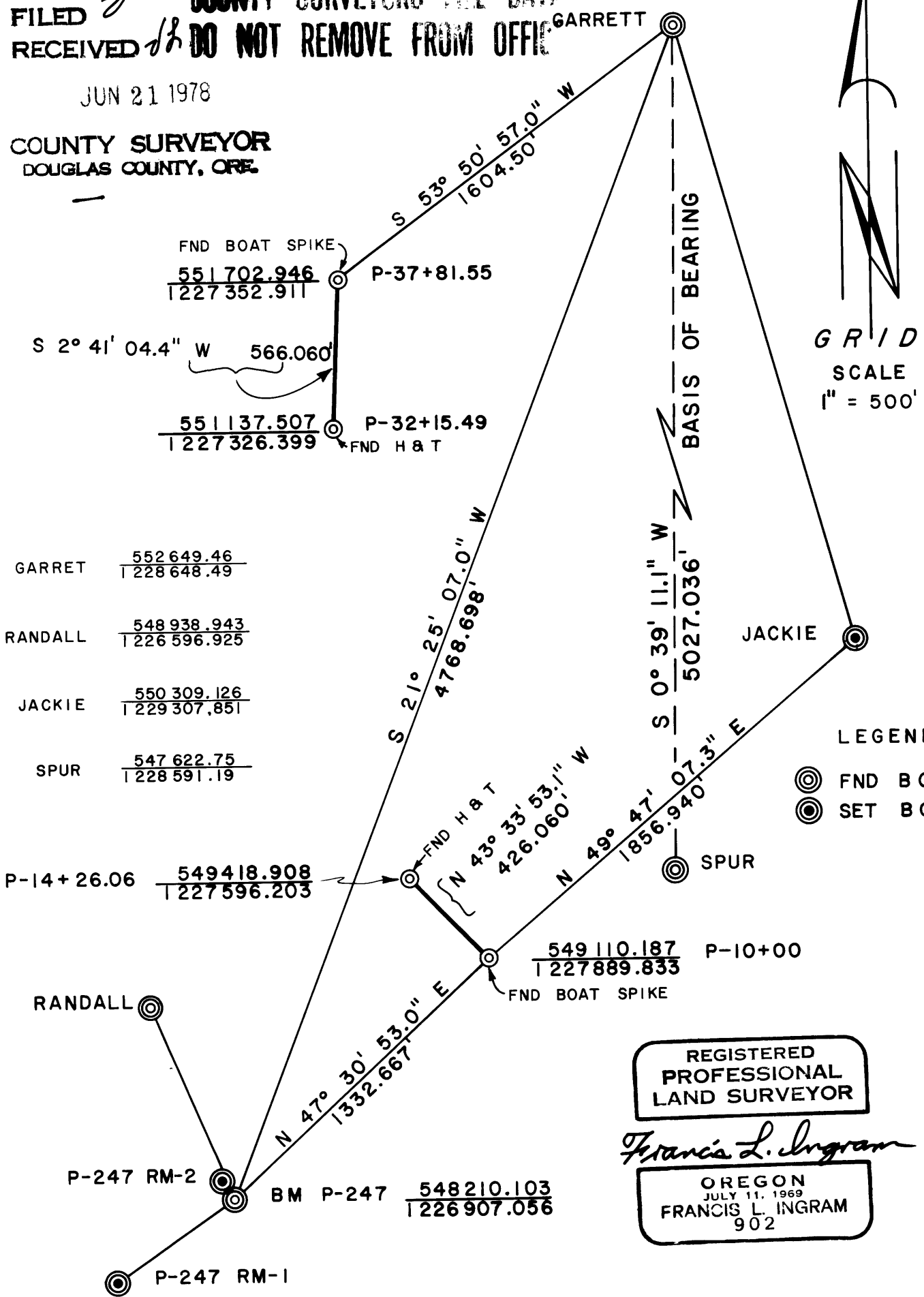


FILED *2* COUNTY SURVEYORS FILE DATA
 RECEIVED *1/2* DO NOT REMOVE FROM OFFICE

JUN 21 1978

COUNTY SURVEYOR
 DOUGLAS COUNTY, ORE.



GARRET	$\frac{552\,649.46}{228\,648.49}$
RANDALL	$\frac{548\,938.943}{226\,596.925}$
JACKIE	$\frac{550\,309.126}{229\,307.851}$
SPUR	$\frac{547\,622.75}{228\,591.19}$

LEGEND:
 (circle with dot) FND BC
 (circle with cross) SET BC

REGISTERED
 PROFESSIONAL
 LAND SURVEYOR

Francis L. Ingram

OREGON
 JULY 11, 1969
 FRANCIS L. INGRAM
 902

SURVEYED FOR
 DOUGLAS COUNTY DEPT. OF PUBLIC WORKS
 (ROAD CONTROL)

SEC. 10, 15, T. 28 S., R. 6 W., W.M.

SURVEYED BY DOUGLAS COUNTY SURVEYOR'S OFFICE
 FRANCIS L. INGRAM COUNTY SURVEYOR
 DRAWN BY BILL STEWART JUNE 1978

NOTE: All data shown based upon the Oregon State
 Plane Coordinate System, South Zone