

FILED
RECEIVED LC

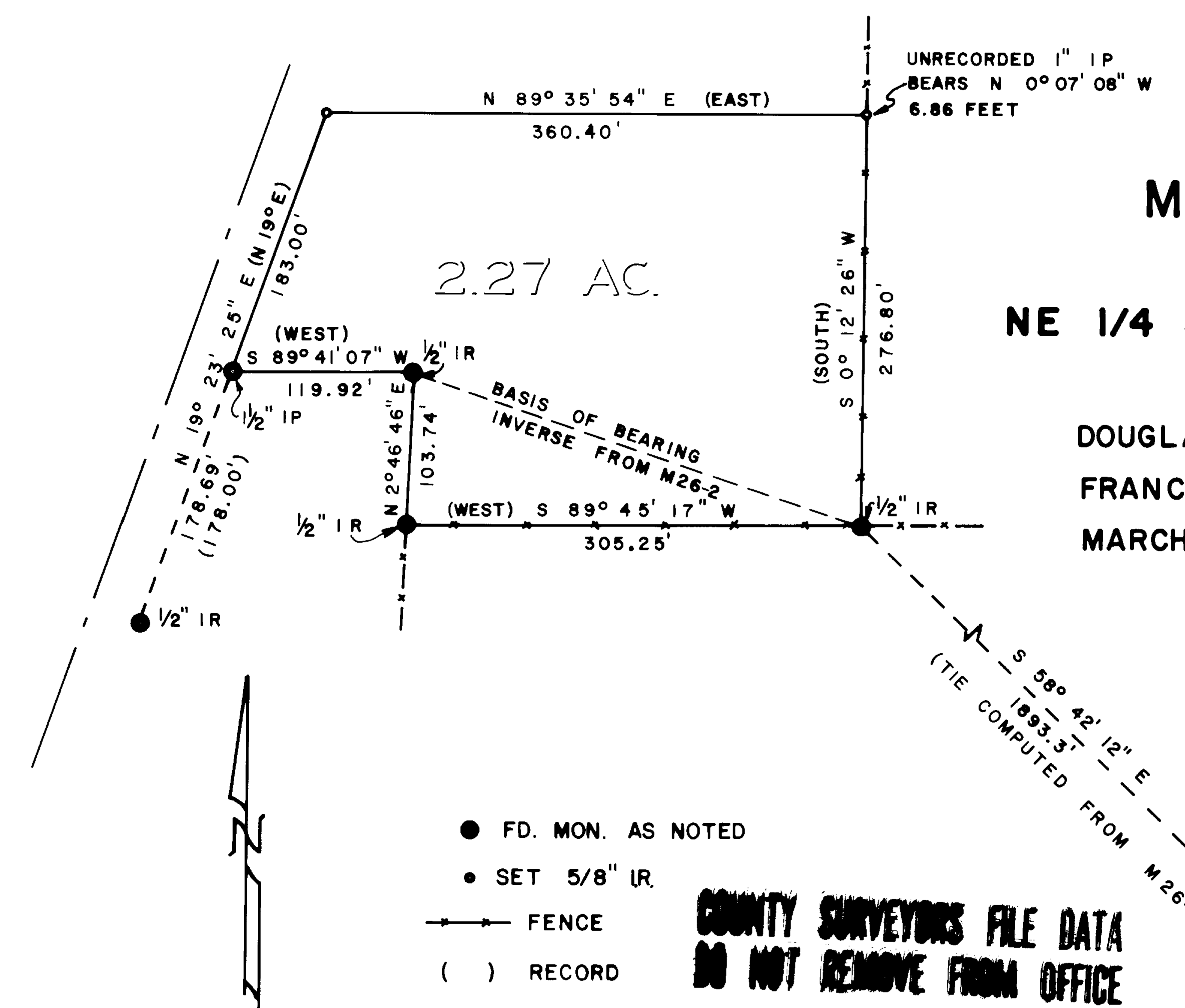
MAR 24 1978

COUNTY SURVEYOR
DOUGLAS COUNTY, ORE.

SURVEY FOR MOORE RENTALS

IN
NE 1/4 SEC. 33, T. 29 S., R. 5 W., W.M.

BY
DOUGLAS COUNTY SURVEYORS OFFICE
FRANCIS L. INGRAM COUNTY SURVEYOR
MARCH 1978 SCALE 1" = 100'



- FD. MON. AS NOTED
- SET 5/8" IR.
- +— FENCE
- () RECORD

**COUNTY SURVEYORS FILE DATA
DO NOT REMOVE FROM OFFICE**

REGISTERED
PROFESSIONAL
LAND SURVEYOR

Francis L. Ingram

OREGON
JULY 11, 1969
FRANCIS L. INGRAM
902

1/4 | 34
● | 1 3/4" I.P.
33 | COR.

CS FILE FOLDER

CONTAINS

MORE

INFORMATION