

T305

DATE: FEB 27, 1978

R 511
I 514 1/4
W

Condition Report Only
 Not Found
 Renewed
 Unrecorded
 Surveyed In
 Referenced Out

Previous Renewal #'s #152

Monument(s) Found: (Condition and Source) A 7"x 11"x 14" STONE,
 APPARENTLY SET BUT NO MARKS OR RECORD, FROM WHICH A
 1"x 36" IRON PIPE WITH BRASS CAP BEARS N 48° E 24⁰ FT., SET
 8" ABOVE GROUND AND MARKED "DOUGLAS CO. SURVEYOR"

T305 RIW
 511 1/4
 514
 1976

BRASS - CAP IS AT RECORD BEARING AND DISTANCE FROM
 ORIGINAL PINE BEARING TREE.

Accessories Found: (Condition and Source) A 12" NOW 18" DIA. B. OAK
 BEARS N 78° E 20³ FT. (REC. N 89° E 19⁰ FT.), WITH A COMPLETELY
 ROTTED OUT BLAZE. A 40" NOW 48" ^{DIA.} PINE STUMP BEARS S 78° E
 23¹ FT. WITH AN OPENED DOUBLE BLAZE AND SCRIBING "BT".

REN. #152 - A 36" NOW 24" DIA. B. OAK BEARS S 25° E
 32⁰ FT. (REC. S 3° W 46³ FT.) WITH SCRIBING "1/4 514 CS BT" IN
 A SINGLE BLAZE. A 14" DIA. D. FIR BEARS N 43° E 35¹ FT.

#169 X

C

(REC. N32°E 112 FT.)

WITH SCRIBING "1/4 S11 CS BT" IN A PARTLY HEALED

SINGLE BLAZE.

RENEWAL

Monument Set: (Procedure and Description) RESET BRASS CAP AT INTERSECTION OF RECORD DISTANCES FROM FACE OF BLAZES.

THIS LOCATION LINES UP WITH APPROX. 50 YR. OLD FENCES TO SOUTH AND WEST, CAUSES SECTION LINE TO FALL BETWEEN

BEARING TREES, AND FALLS IN CENTER OF UNRECORDED BUT APPARENTLY SET STONE AND BLAZES FROM BOTH DBT'S FACE IT, 1 RESET STONE AT WEST EDGE OF BRASS CAP

New Accessories: (Description) NONE

BRASS CAP IS 3" ABOVE GROUND AND MARKED "DOUGLAS CO. SURVEYOR"

T305 RIW
511 1/4
514

RESET 1978
1976

A PROPORTIONED CORNER (STONE & TACK) BEARS N4W 22 FT.

1 SET A 5/8" X 30" IRON ROD WITH ALUM. CAP 5" ABOVE GROUND AND MARKED "DOUGLAS CO. SURVEYOR" AT OLD LOCATION OF B.C. RP

Location and Comments:

20°E

Compass Declination

DCSO

Agency

R.B. KIMBERLING

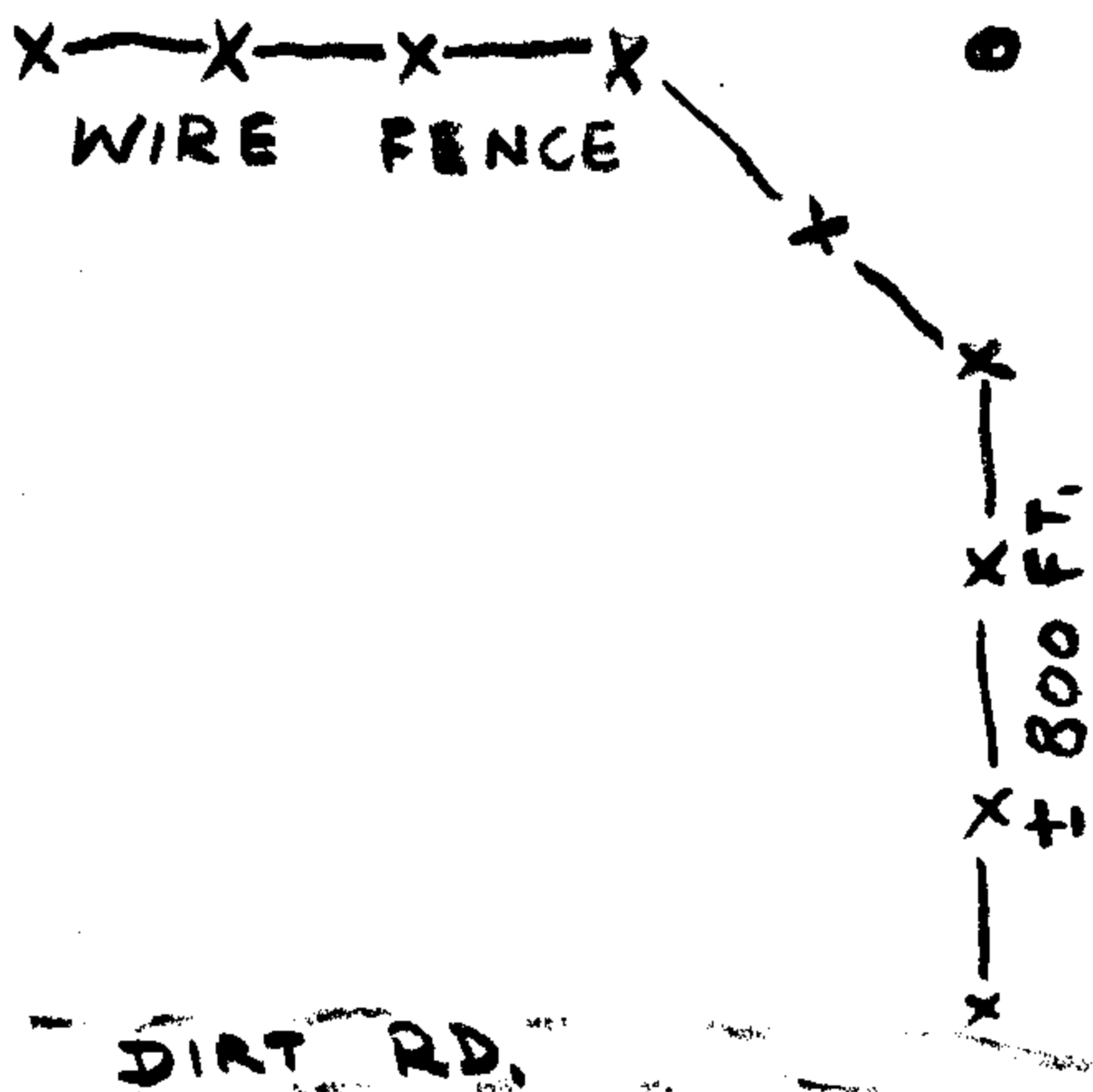
Party Chief

R.B. Kimberling

Notekeeper

P.L. EARLE

Witnesses



RECOVERY NOTES

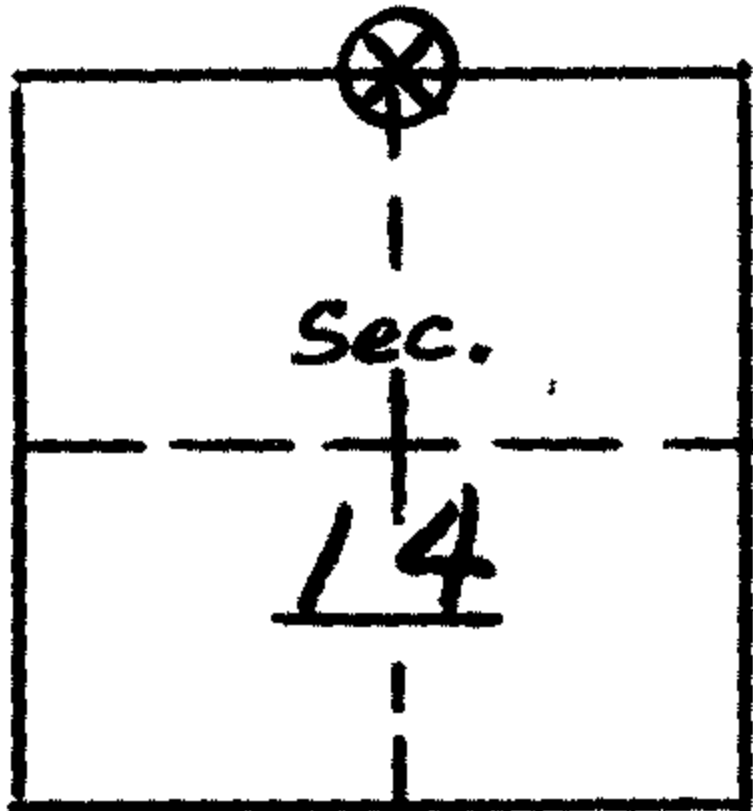
PROPERTY CORNER INVESTIGATION

LOCATION

T. 30S R. 1W

Mer. WILL. State ORE.

Forest UMPR Dist. TILLER



LEGEND

- Corner searched-no evidence
- ⊗ Corner or accessory found
- Corner marked by perm. mon.

DESCRIPTION OF FOUND CORNER

MATERIAL: STONE SIZE: 6" x 6" x 8"

HEIGHT ABOVE GROUND: 3" CONDITION: GOOD

MARKINGS: NONE - NOT OF RECORD.

SET LOOSELY AT APPROX. COR. LOCATION.

DESCRIPTION OF FOUND ACCESSORIES

A 48" POND. PINE STUMP BEARS S74°E, 21.78'. OPEN DOUBLE BLAZES & FIND FAINT SCRIBING & REVERSE. (RECORD BEARING IS S14°E).

A 16" OAK BEARS N89°E, 19.8'. UPPER BLAZE IS ROTTED OUT. HAS A HEALED LOWER BLAZE.

NOTE: Indicate full investigative details on back of form.

PHOTO IDENTIFICATION

Symbol & date _____ Line or Roll _____ Exposure _____

How Identified _____ Where filed _____

RECOVERED BY: Thomas J. Layton

DATE: July 28, 1976 TITLE: Civil Eng. Tech.

Form R6-3680-180 (4/61)-19

U. S. File No. 59/465 See Back

I PLACED A U.S.F.S. BEARING TREE
SIGN ON BOTH THE STUMP AND
THE OAK B.T.

A 4 STRAND BARBED WIRE
FENCE WHICH BEARS NORTH &
SOUTH LIES 70' ± WEST OF THE
CORNER.

Dennis J. Hayford

$\frac{1}{4}$ $\frac{311}{314}$

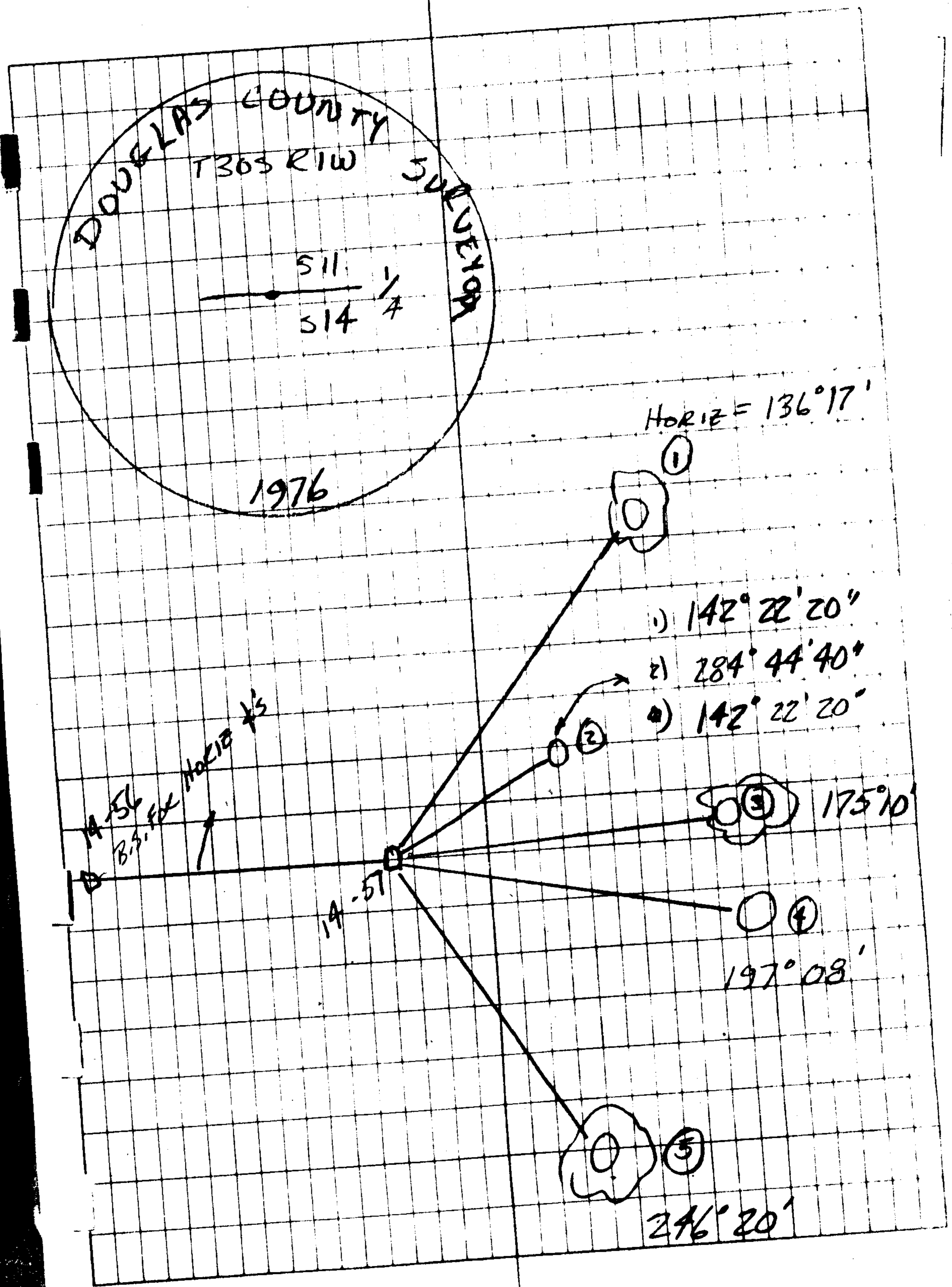
- ① 1 FD. 15" D. FIR WITH VISIBLE SCRIBE " $\frac{1}{4}$ 311 CS, BT."
N 46° E (MAG), 33² FT FROM MY POINT # 14-57
- ② 1 FD A 1" PIPE WITH A 2 $\frac{1}{2}$ " BRASS CAP MARKED AS SHOWN 22⁶ FT FROM MY POINT # 14-57
- ③ 1 FOUND A 20" B. OAK, PREVIOUSLY OPENED AND ROTTEN IN THE CENTER, N 86° E (MAG) ~~20~~ 20⁴ FT. RING COUNT SHOWED AT LEAST 30 YEARS TO ROTTN PORTION. (POSSIBLE ORIGINAL B.T.?)
- ④ 1 FOUND ORIGINAL PINE BT., NOW 48" PINE STUMP, S 72° E (MAG), 24⁰ FROM MY POINT # 14-57. VISIBLE SCRIBING "BT", FACES # 14-57.
- ⑤ 1 FOUND "
S 23° E (MAG), 35³ FT WITH VISIBLE SCRIBING " $\frac{1}{4}$ 314 CS, BT"

No. 302

Weatherproof

J. L. DARLING CORP
TACOMA WASH. U.S.A.

L3LA



C.S. 59/46-19