

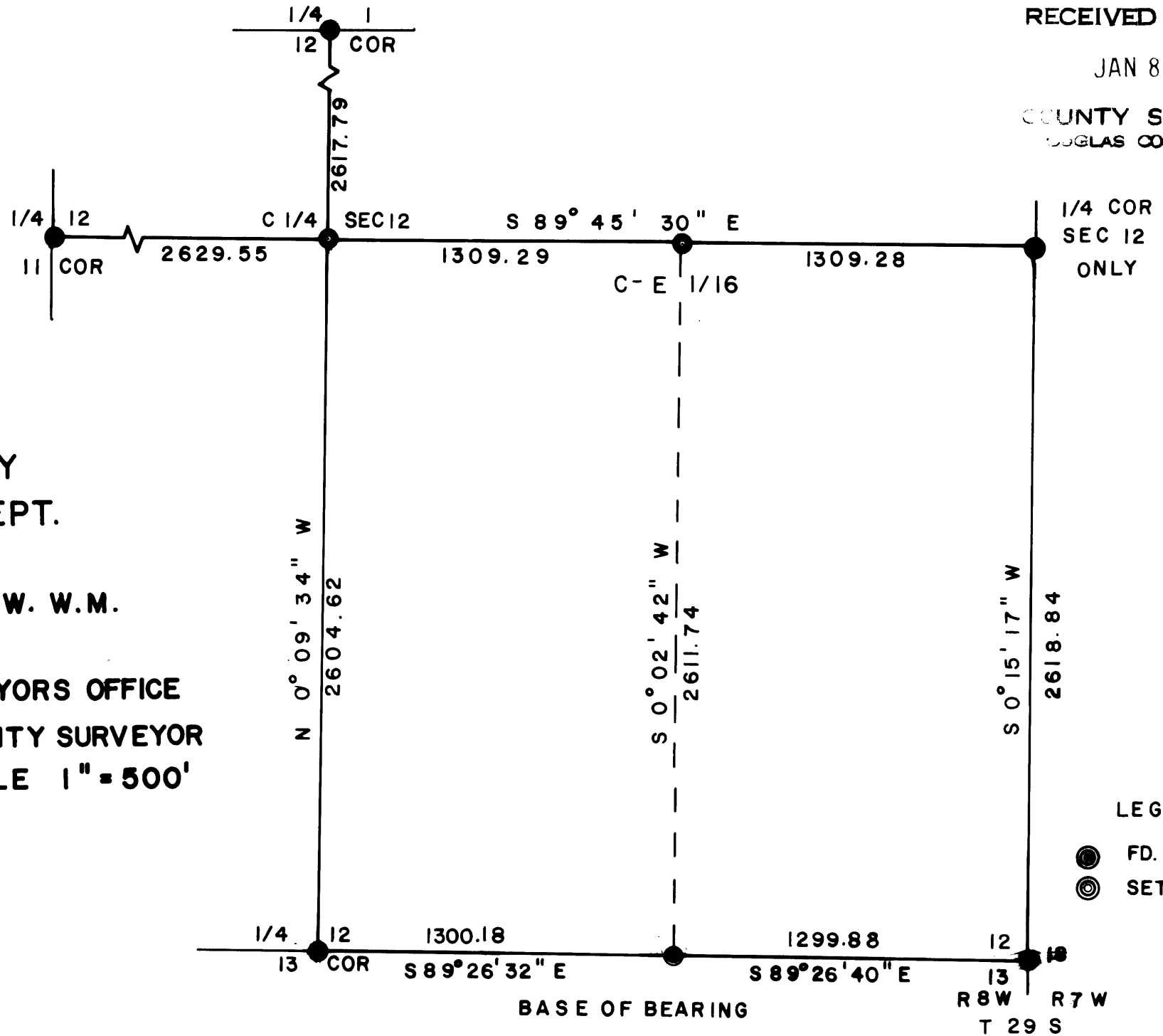
COUNTY SURVEYORS FILE DATA
DO NOT REMOVE FROM OFFICE

FILED ✓
RECEIVED *dh*

JAN 8 1979

COUNTY SURVEYOR
DOUGLAS COUNTY, ORE.

TH



SURVEY FOR
DOUGLAS COUNTY
PUBLIC WORKS DEPT.
IN

SE 1/4 SEC 12; T 29 S; R 8 W. W.M.

BY

DOUGLAS COUNTY SURVEYORS OFFICE
FRANCIS L. INGRAM COUNTY SURVEYOR
NOV. 1978 SCALE 1" = 500'

REGISTERED
PROFESSIONAL
LAND SURVEYOR

Francis L. Ingram

OREGON
JULY 11, 1969
FRANCIS L. INGRAM
902

LEGEND

- FD. BRASS CAP
- ⊙ SET BRASS CAP

BEARINGS BASED ON RM 3-8

C. S. File No. *59/41*

NARRATIVE OF SURVEY

LOCATION:

Survey located in Section 12, Township 29 South, Range 8 West, Willamette Meridian, Douglas County, Oregon.

PURPOSE:

The purpose of this survey was to establish the North - South centerline of the Southeast 1/4 of Section 21, T.29S., R.8W., Willamette Meridian.

PROCEDURE:

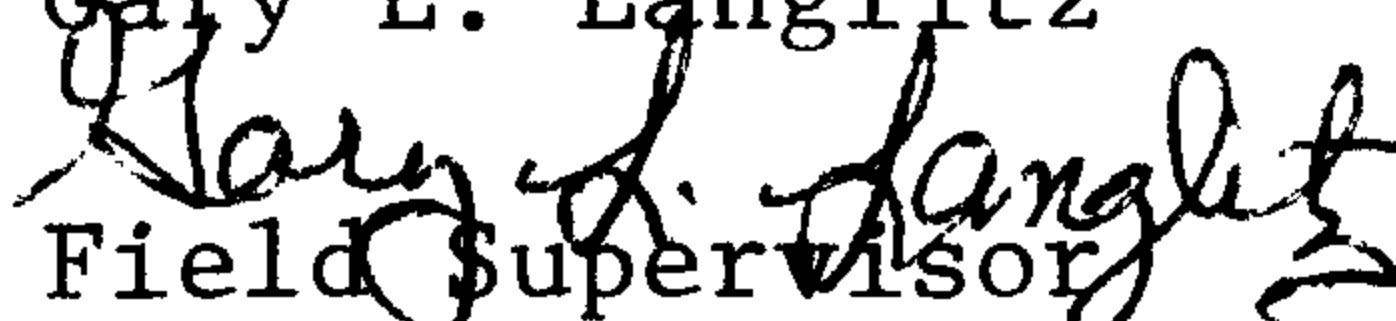
All existing 1/4 section corners on the perimeter of Section 12 were found. These corners were evaluated and rehabilitated. Records of these corner rehabilitations were placed on file in the Douglas County Surveyor's Record of Government Corners Renewed. (See also Douglas County Surveyor's Map File RM 3-8 for additional information.) Basis of Bearing for this survey is the Oregon State Plane Coordinate System, South Zone, using control established in connection with the survey shown in Douglas County Surveyor's Map File RM 3-8. The exterior 1/4 corners of Section 21 were tied by traverse and Oregon State Plane Coordinates, South Zone were computed for these points. The position of the center 1/4 corner of Section 12 was established at the intersection of straight lines between opposite exterior 1/4 corners. The position of the C-E 1/16 corner was established halfway between the center 1/4 corner and the East 1/4 corner and on the E-W centerline of the section. The C 1/4 and C-E 1/16 corners in Section 12 were established in the field and monumented with 1" iron pipes and brass caps. Corner accessories were marked and complete notes were filed in the Douglas County Surveyor's Record of Government Corners Renewed. Previously set monuments were found near the C 1/4 and C-E 1/16 corner positions. We were unable to find any record of the establishment of these monuments and therefore did not accept them as controlling locations. Redundant field angular measurements were taken with a onesecond theodolite. All distances were measured electronically with the exception of some short ties which were measured by steel tape. All field observations were reduced to their proper equivalents on the Oregon State Plane Coordinate System, South Zone. All computations were based on this coordinate system and the final values shown on the map of this survey are the true equivalents of the corresponding coordinate system values.

This survey was started on September 28, 1978 and completed on December 18, 1978.

Persons present in the field during various phases of the survey include the following:

Gary L. Langlitz, Larry E. Monrean, Karen Reed, Peter L. Earle, Stephen J. Flause, Frank C. Silagy, Terrie Plouff, Deloris Keady, Virginia Laugen.

This narrative was prepared on January 11, 1979 by:

Gary L. Langlitz

Field Supervisor
Douglas County Surveyor's Office