

# SURVEY FOR DOUGLAS COUNTY DEPT. OF PUBLIC WORKS

(ROAD CONTROL - CLEVELAND HILL RD. # 59)

SEC. 25, T. 26 S., R. 7 W., W.M.

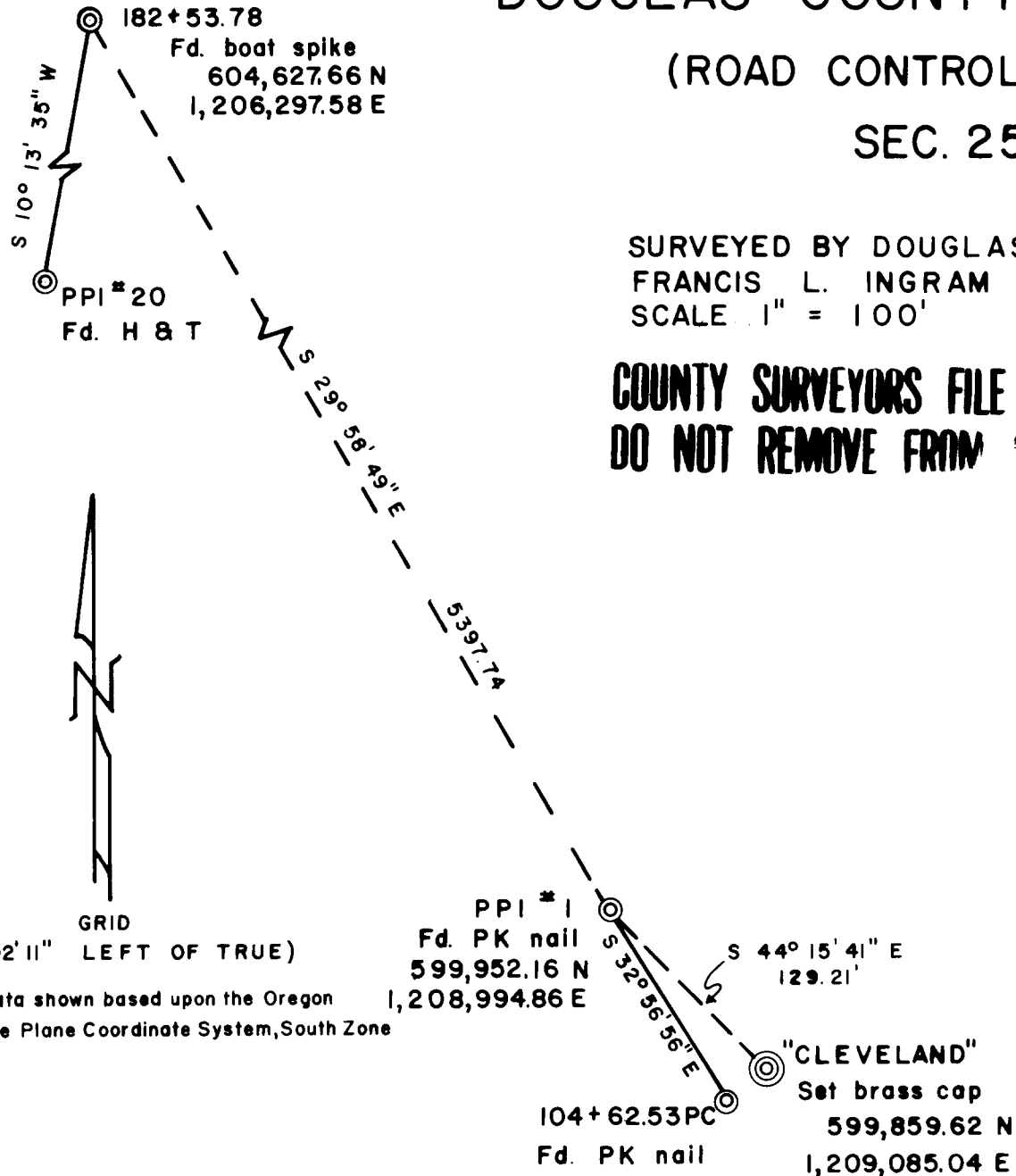
FILED  
RECEIVED *ALS*

JUN 02 1976

COUNTY SURVEYOR  
DOUGLAS COUNTY, ORE.

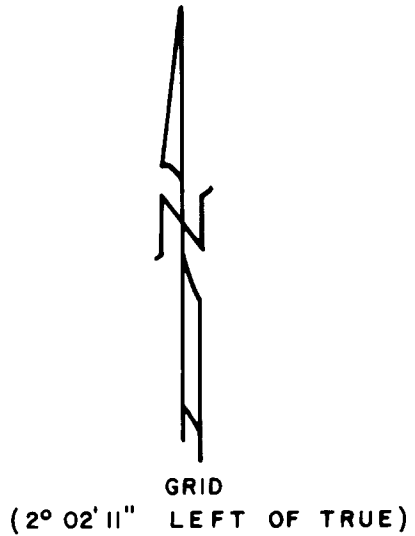
SURVEYED BY DOUGLAS COUNTY SURVEYOR'S OFFICE  
FRANCIS L. INGRAM  
SCALE 1" = 100'  
COUNTY SURVEYOR  
MAR., 1976

**COUNTY SURVEYORS FILE DATA  
DO NOT REMOVE FROM OFFICE**



CONTROL STATIONS

UW - 5		UW - 6	
605,194.62	N	605,739.17	N
1,209,717.94	E	1,207,753.55	E



NOTE: All data shown based upon the Oregon State Plane Coordinate System, South Zone

REGISTERED  
PROFESSIONAL  
LAND SURVEYOR

*Francis L. Ingram*

OREGON  
JULY 11, 1969  
FRANCIS L. INGRAM  
902

CS FILE FOLDER

CONTAINS

MORE

INFORMATION