

M 97-48

FILED
RECEIVED

11/23 1984

OREGON CORNER RESTORATION FORM

Section 32 Township 21S Range 5W

County Douglas Date 11/2/1984

COUNTY SURVEYOR
DOUGLAS COUNTY, ORE.

Corner Designation

E 1/16 Corner on South Line

- Condition Report Only
- Not Found
- Renewed
- Unrecorded
- Surveyed In
- Referenced Out

Previous Renewals/Surveys, etc.

Floyd J. Cole 10/18/1915

(SEE C.S. F.O. 49 P. 2 & Vol. 3 P. 176)

Monument(s) & Accessories Found: (Condition and Source)

1 1/2" x 36" Iron Pipe

42" Fir stump S 20 W 7.0' (1915) Axe marks and scribing visible on rotten stump

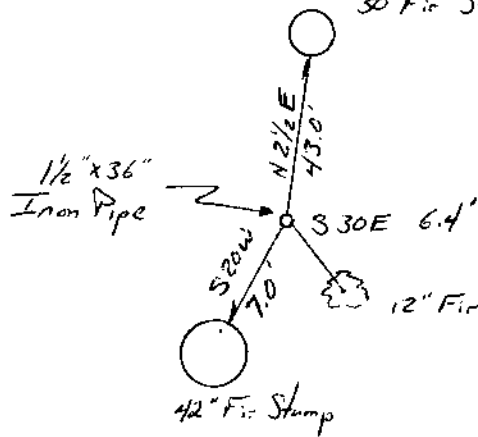
30" Fir stump N 2 1/2 E 43.0' (1915) Axe mark visible on rotten stump

12" Fir BT of unknown origin bears S 30 E 6.4' to center of tree

Monument Detail

30" Fir Stump

Sketch



Monument Set (Procedures and Description)

New Accessories

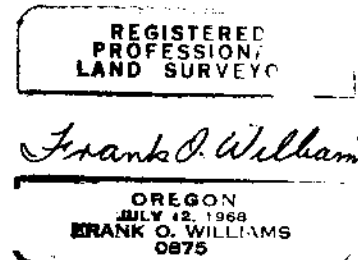
Location & Comments

Monument lies approxi-
mately 300' west of ridge
line on 75% side slope.

Compass Declination 20° E
Firm/Agency Weyerhaeuser Company

Surveyor's Seal

Address P. O. Box 275
Springfield, Oregon 97477
Party Chief D. Wellman
Notes _____
Witness L. Thiede



C.S. File No. 58/300-2

4