

SURVEY TO ESTABLISH PROPERTY CORNERS FOR DEED DESCRIPTION

in the SE 1/4 of Section 33 T. 24 S. R. 6 W., W.M.

June, 1984

Scale: 1"=400'

FILED
RECEIVED *BS*

JUL 19 1984

For: Josephine Carlson
722 Old Garden Valley Rd.
Roseburg, OR. 97470

By: Baughman Technical Services
5157 N. Umpqua Hwy.
Roseburg, OR. 97470

COUNTY SURVEYORS FILE DATA
DO NOT REMOVE FROM OFFICE

COUNTY SURVEYOR
DOUGLAS COUNTY, ORE. *BS*

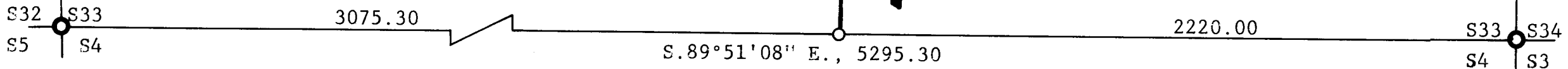
S.89°51'08" E., 2220.00

Narrative:

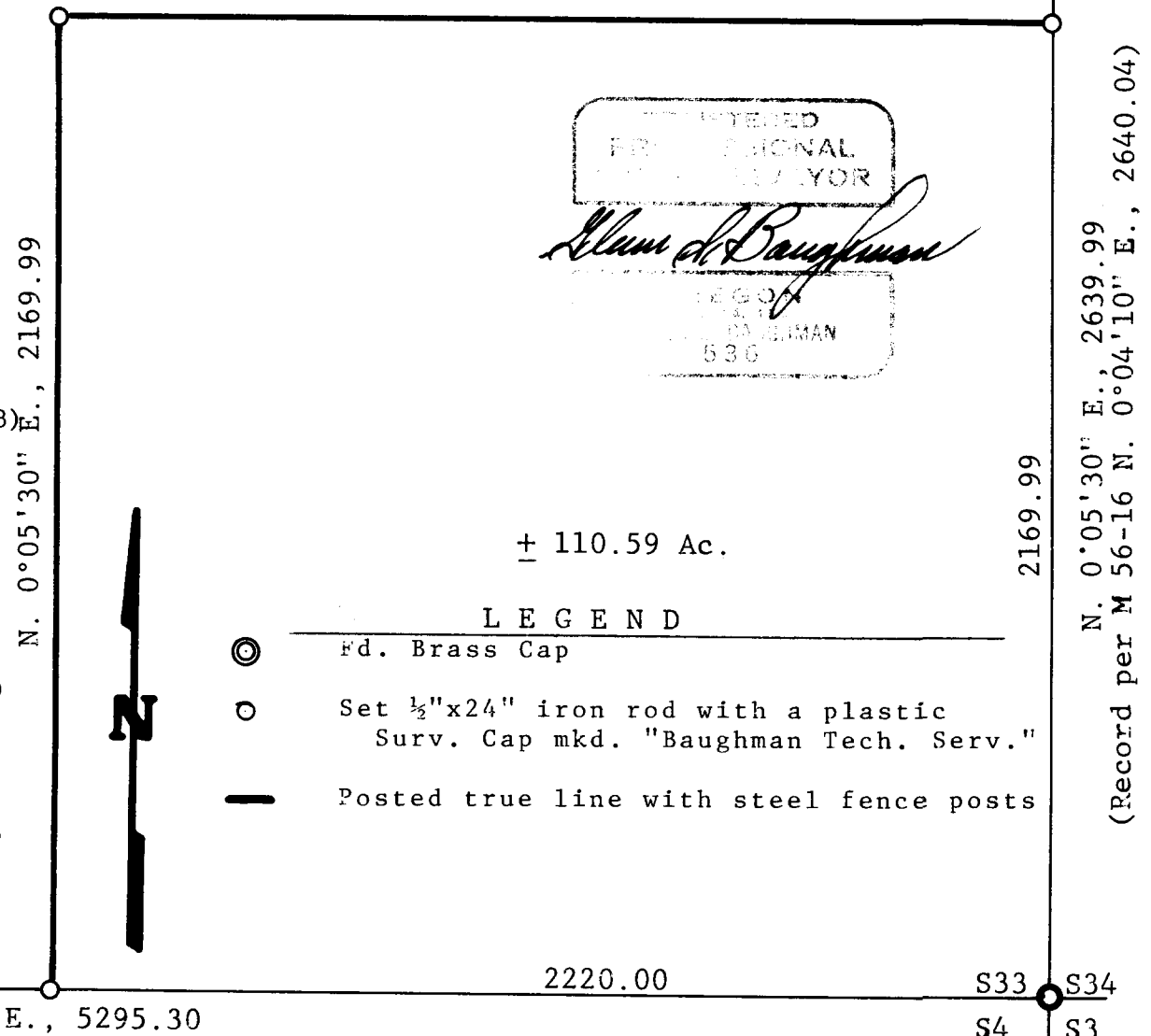
The purpose of this survey was to survey, monument and describe a 110.59 acre parcel to be retained from the South 1/2 of Section 33, T. 24 S. R. 6 W., W.M. Controlling corners found were the Southeast, Southwest and the East 1/4 Section Corners of Section 33. A closed loop random line traverse was run tying all controlling corners and around the North and West boundaries of the 110 acre parcel. The said North and West boundaries were posted with steel fence posts by computed offsets from random line traverse points. The basis of bearings was a solar observation taken near the N.W. Corner of the 110.59 acre parcel on June 11, 1984. Project personnel were Glenn S. Baughman, Project Supervisor, Kristian O. DeGroot, Project Surveyor and B. Lewis Baughman chainman. Equipment used was a Leitz TM 20-C Theodolite, a Precision International Beetle 1000 and Hewlett Packard 3805 E.D.M.

Corner Descriptions:

- S32 | S33 Fd. 1" iron pipe with brass cap per renewal #79(C.S. File 49/123)
S5 | S4 From which bearing trees by Godfrey in 1962:
A 7" madrone bears N. 44° W., 24.8 ft. with healed blaze.
A 13" D. fir bears N. 75° E., 24.7 ft. with healed blaze.
A 15" W. fir bears S. 78° E., 67.0 ft. with healed blaze.
A 10" madrone bears S. 78° W., 54.4 ft. with healed blaze.
S33 | S34 Fd. a 1 1/2" U.S.B.L.M. standard brass capped monument as set by
S4 | S3 Cadastral Surveyors Albright and Bowder in a 1972 Resurvey.
From which a bearing tree by Stewart in 1922:
A 35" D. fir bears N. 7° W., 9.7 ft. with healed blaze.(Rec. N.16° W.,9.2 ft.)
and bearing trees by Godfrey in 1962:
A 15" & 12" Twin W. oak, the 15" bears S. 74° W., 63.5 ft. with healed blaze.
A 20" D. fir bears N. 30° E., 35.4 ft. with healed blaze.(Rec. N. 28° E.)
A 11" W. oak bears S. 32° E., 9.5 ft. with healed blaze.
1/4 Fd. 1" iron pipe with brass cap per renewal #88(C.S. File 52/102)
S33 | S34 From which bearing trees by Tracy in 1969:
A 16" W. fir bears N. 40° W., 37.3 ft. with healed blaze.
A 15" D. fir bears S. 19° E., 11.4 ft. with healed blaze.



(Record per M 72-61, S.89°06'30" E., 5295.24)



REGISTERED
PROFESSIONAL
SURVEYOR
Glenn S. Baughman
REG. NO. 536
GLENN S. BAUGHMAN

± 110.59 Ac.

LEGEND

- ⊙ Fd. Brass Cap
- Set 1/2"x24" iron rod with a plastic Surv. Cap mkd. "Baughman Tech. Serv."
- Posted true line with steel fence posts