

M 98-17

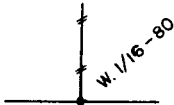
OREGON CORNER RESTORATION FORM

Section 30 Township 19S Range 8W

County Douglas Date 1-15-85

Corner Designation

West 1/16-80 Corner
South Line Sec. 30



- Condition Report Only
- Not Found
- Renewed
- Unrecorded
- Surveyed In
- Referenced Out

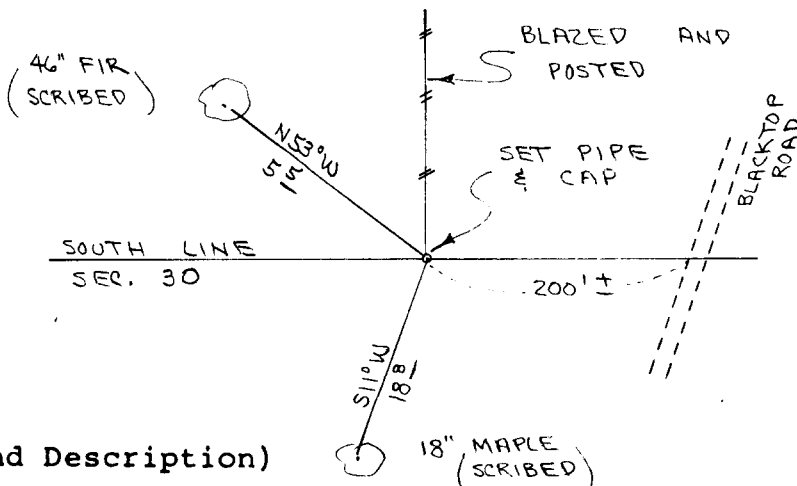
(3)

Previous Renewals/Surveys, etc. None

Monument(s) & Accessories Found: (Condition and Source)

Monument Detail

Sketch



Monument Set (Procedures and Description)

Set $2\frac{1}{2}$ " x 30' Aluminum pipe and cap. Buried purple magnetic marker under aluminum pipe. See filed survey in Section 30.

New Accessories

18" Maple, S11W, 18.8' (Painted/Scribed/Aluminum washer)

46" Fir, N53W, 5.5' (Painted/Scribed/Aluminum washer)

Set metal fence post beside aluminum pipe. Wired land survey monument sign to fence post.

Location & Comments

Corner lies on S.E. slope about 200' West of blacktop road.

Compass Declination 20 $\frac{1}{2}$
Firm/Agency Roberts Surveying Inc.
Address 29 West 29th St. Eugene, Oregon 97405
Party Chief Ted Baker
Notes Stu Duce
Witness _____

Surveyor's Seal

