

M 90-53

FILED
RECEIVED *BJ*
APR 11 1984

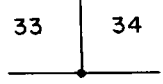
OREGON CORNER RESTORATION FORM

COUNTY SURVEYOR
DOUGLAS COUNTY, ORE.

Section 34 Township 20S Range 9W
County Douglas Date 2-14-84

Corner Designation

S.W. Corner
Section 34



- Condition Report Only
- Not Found
- Renewed
- Unrecorded
- Surveyed In
- Referenced Out

Previous Renewals/Surveys, etc. Thomas A. Tillman and Joseph S. Gawron G.L.O. Survey in 1953-1954. Peterson's Cadastral survey in 1966-1967.

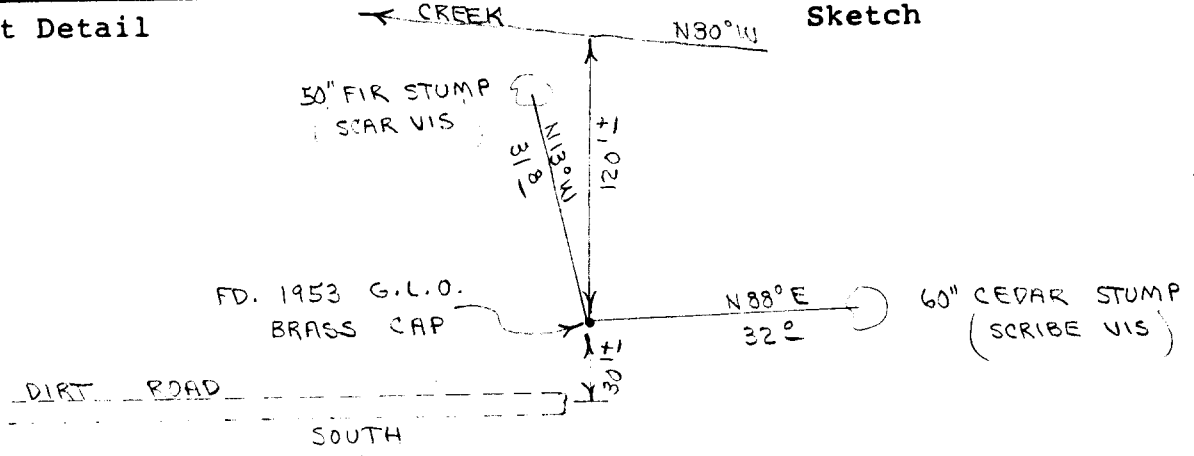
Monument(s) & Accessories Found: (Condition and Source)

Found 1953 G.L.O. Brass Cap bent over from logging. I straightened pipe and re-set in ground. Buried purple magnetic marker under 36" pipe.

50" Fir Stump, N13W, 31.3' (Scar Vis.), 1877 BT. Rec. N14W, 30.4' Theil's NE, SE and SW Bt.'s set in 1877 and found in 1953 have been destroyed by logging.

60" Cedar Stump, N88E, 32.0' (Scribe Vis.), 1953 BT. Record N83 1/2 E, 31.7'

Monument Detail



Monument Set (Procedures and Description)

New Accessories

Set metal fence post beside brass cap. Wired survey attention sign to fence post.

Location & Comments

Corner lies on flat ground about 120' South of creek. Creek bears N30W. Corner is at end of dirt road in alder reproduction.

Compass Declination 20 1/2
Firm/Agency Roberts Surveying Inc.
Address 29 West 29th St. Eugene, Oregon 97405
Party Chief Les Roberts
Notes Ted Baker
Witness Stu Duce

Surveyor's Seal

