

M 96-30

FILED RECEIVED *RS*

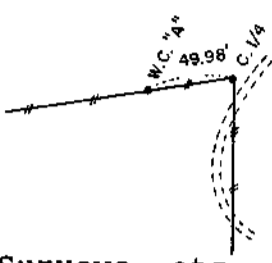
APR 10 1984

OREGON CORNER RESTORATION FORM
Section 5 Township 21S Range 9W
County Douglas Date 3-27-84

COUNTY SURVEYOR
DOUGLAS COUNTY, ORE.

Corner Designation

Witness Corner
to $C\frac{1}{4}$ Corner
Section 5

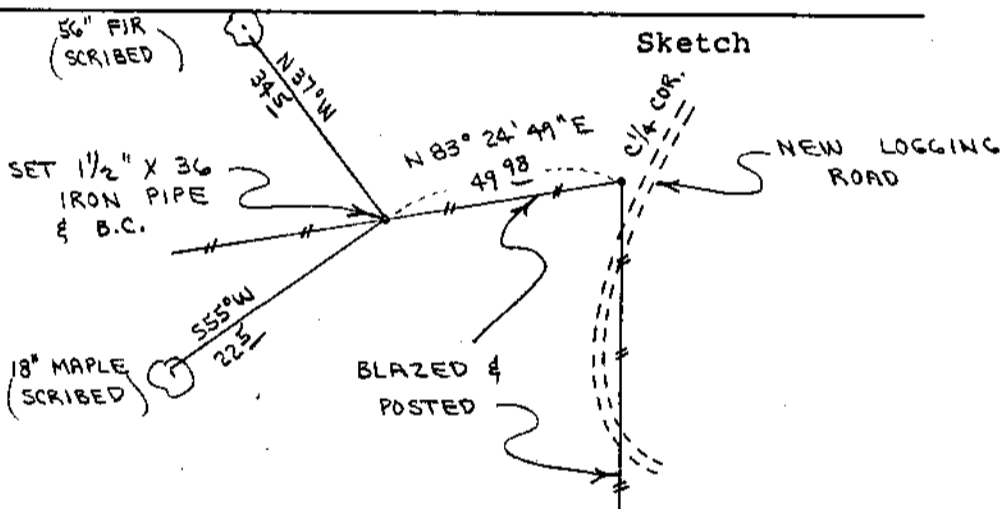


- Condition Report Only
- Not Found
- Renewed
- Unrecorded
- Surveyed In
- Referenced Out

Previous Renewals/Surveys, etc. See survey M90-30 by Roberts
Surveying dated December 21, 1982.

Monument(s) & Accessories Found: (Condition and Source)

Monument Detail



Monument Set (Procedures and Description)
Set $1\frac{1}{2}$ " x 36" Iron Pipe and Brass Cap. Buried orange magnetic
marker under 36" pipe. True center $\frac{1}{4}$ corner bears $N83^{\circ}24'49''$ E,
49.98'. Brass Cap stamped S-T-R, date and P.L.S. No. 1039.

New Accessories
18" Maple, S55W, 22.5' (Scribed/Painted/Brass Washer)
56" Fir, N37W, 34.5' (Scribed/Painted/Brass Washer)

Location & Comments
Corner falls on East slope in light stand of 150 year old green timber.
Compass Declination $20\frac{1}{2}$
Firm/Agency Roberts Surveying Inc.
Address 29 West 29th St. Eugene, Oregon 97405
Party Chief Les Roberts
Notes Stu Duce
Witness Marion Hunter

Surveyor's Seal

REGISTERED PROFESSIONAL LAND SURVEYOR

Les Roberts

OREGON
AUGUST 22, 1975
L. D. ROBERTS
1039