

SURVEY TO MONUMENT PART OF LOT 1, BLOCK 1, WHARTON ACRES  
 Located in SW 1/4 of Section 13, T.27S., R.6W.W.M.  
 Scale 1"=40' December 1983

Surveyed for:  
 Jennie G. Wharton  
 287 S.E. Claire St.  
 Roseburg, OR.

Surveyed By:  
 Baughman Technical Service Inc.  
 5157 North Umpqua Hwy.  
 Roseburg, OR. 97470  
 Phone 673-0966

**COUNTY SURVEYORS FILE DATA  
 DO NOT REMOVE FROM OFFICE**

**LEGEND**

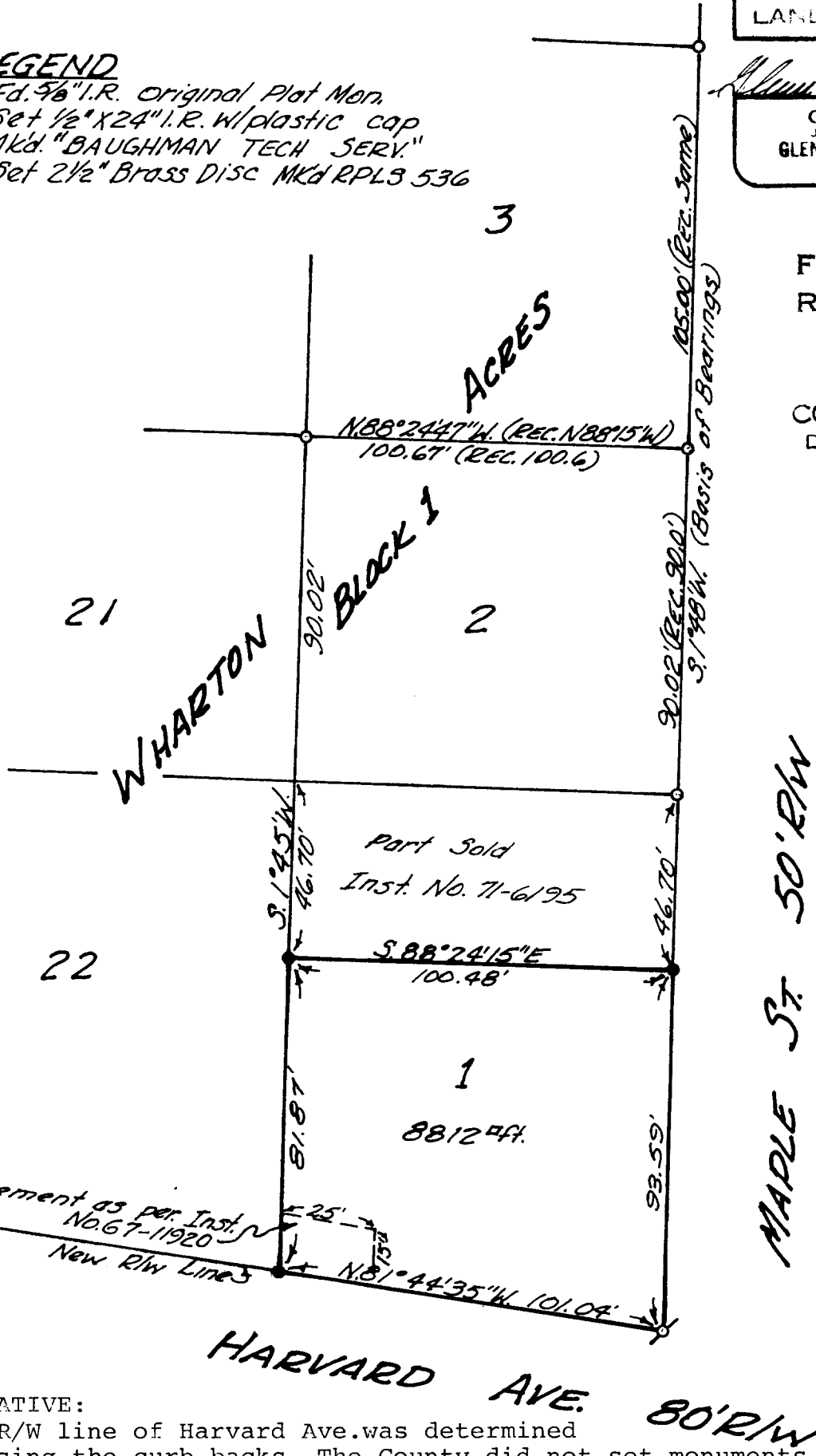
- Fd. 9/8" I.R. Original Plat Mon.
- Set 1/2" X 24" I.R. w/ plastic cap MK'd. "BAUGHMAN TECH SERV."
- ⊕ Set 2 1/2" Brass Disc MK'd RPL3 536

PROFESSIONAL  
 LAND SURVEYOR  
*L. Baughman*  
 ORDER NO.  
 GLENN S. STELLMAN  
 536

FILED ✓  
 RECEIVED ✓

JAN 10 1984

COUNTY SURVEYOR  
 DOUGLAS COUNTY, ORE.



Easement as per Inst. No. 67-11920  
 New R/W Lines

**NARRATIVE:**  
 The R/W line of Harvard Ave. was determined by using the curb backs. The County did not set monuments at the time of R/W acquisition. All other lines were determined by found original monuments. Field work was performed by K. DeGroot and L. Baughman, using a Lietz TM20C theodolite and Beetle 1000 EDM. Office work was performed by G. Baughman.