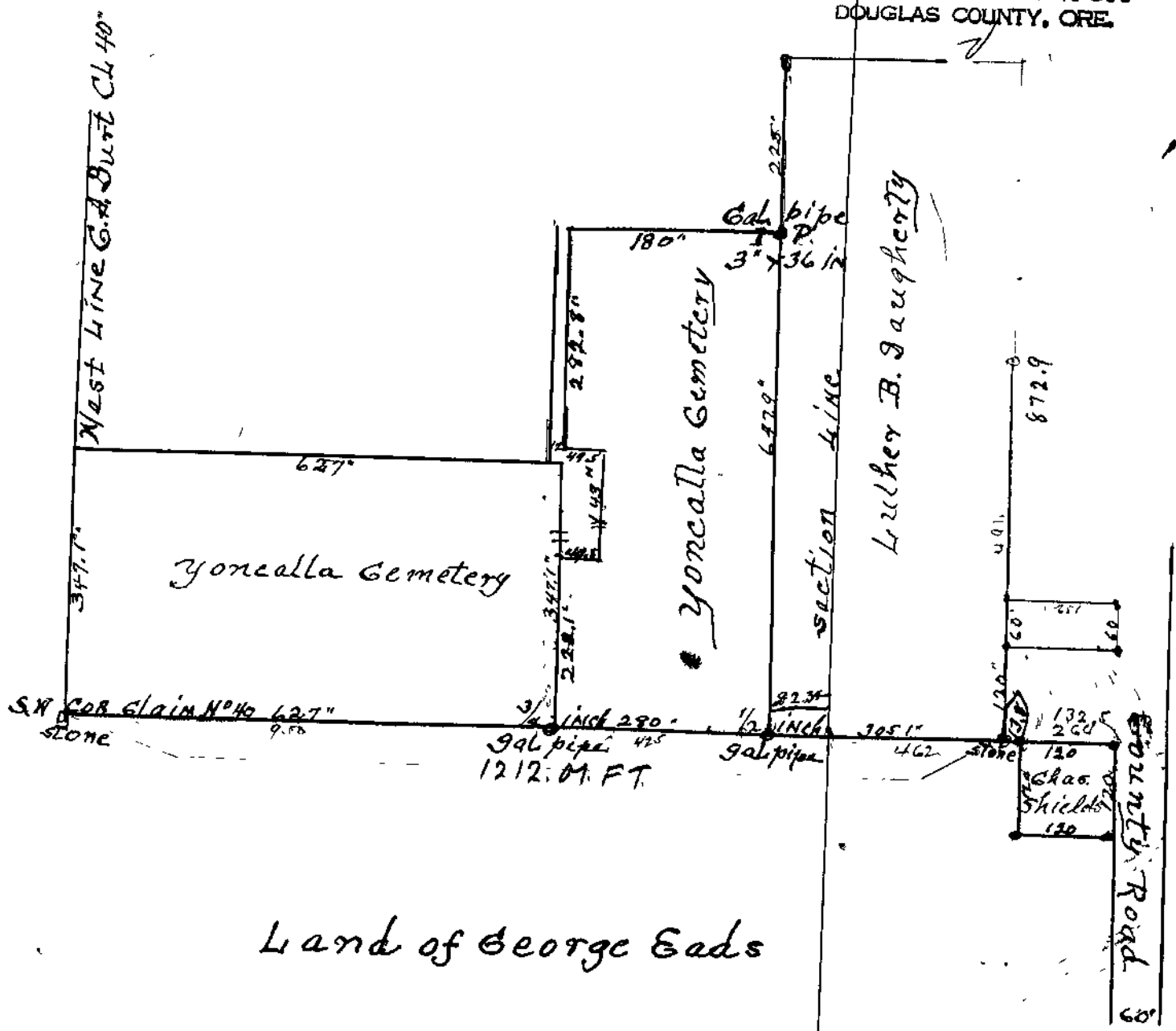


FILED
 RECEIVED
 MAR 21 1984
 COUNTY SURVEYOR
 DOUGLAS COUNTY, ORE.



Land of George Eads

scale 1" = 200 Feet. = 3 1/2" = 1000
 1/2" = 20

T. 23-5 Sec 4-00
 THEIL 3 CC
 See ALSO OLD FIELD BOOK 4 P 2

C.S. File No. 58/286-9