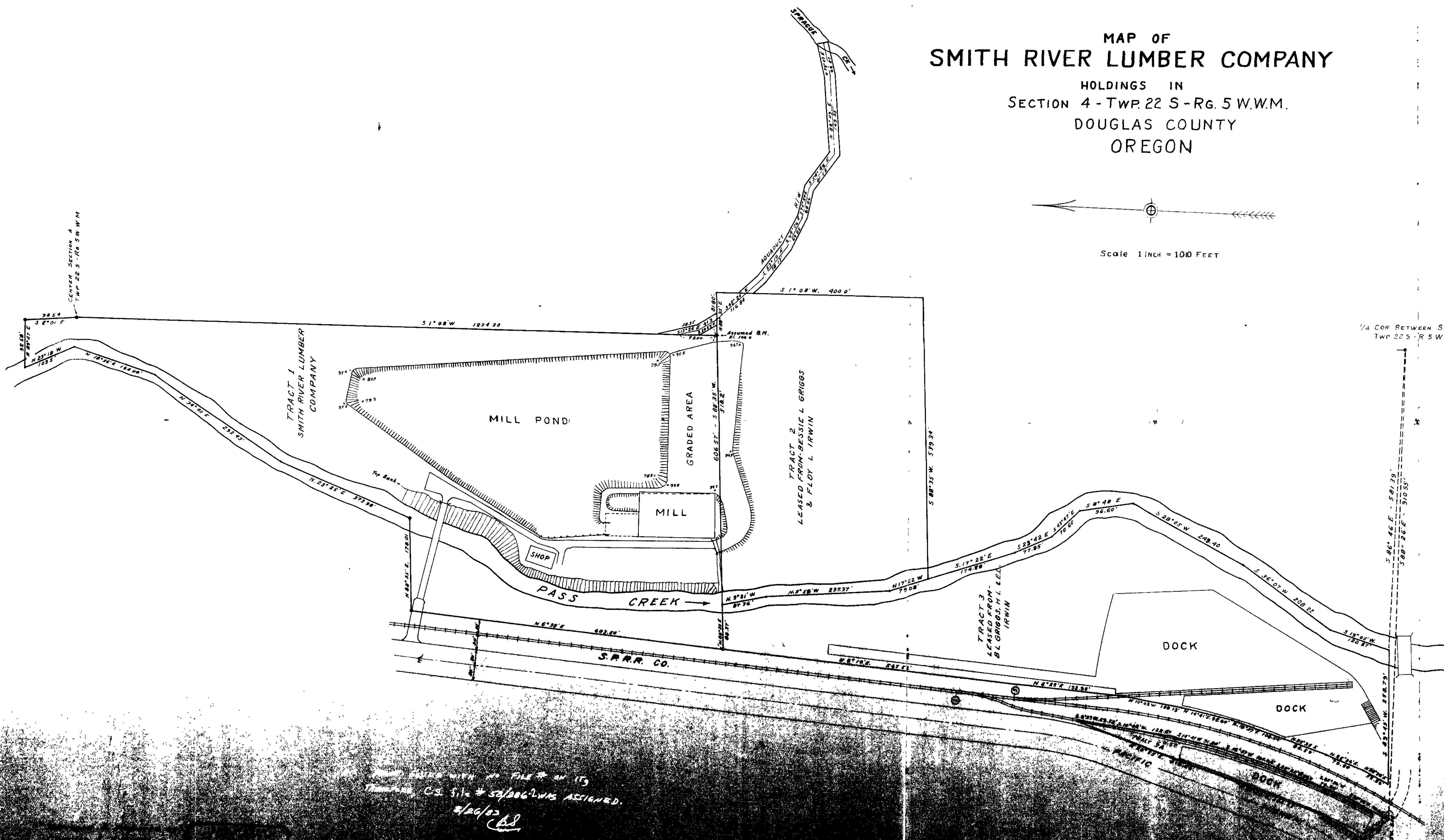


MAP OF  
**SMITH RIVER LUMBER COMPANY**  
 HOLDINGS IN  
 SECTION 4 - TWP. 22 S - R. 5 W. W. M.  
 DOUGLAS COUNTY  
 OREGON



Scale 1 INCH = 100 FEET

1/4 COR BETWEEN SECS 4 & 9  
 TWP 22 S - R 5 W W. M.



FILED WITH NO. FILE # 15  
 TWP. 22 S. R. 5 W. W. M. ASSIGNED.  
 1/20/02

C.S. 5/20