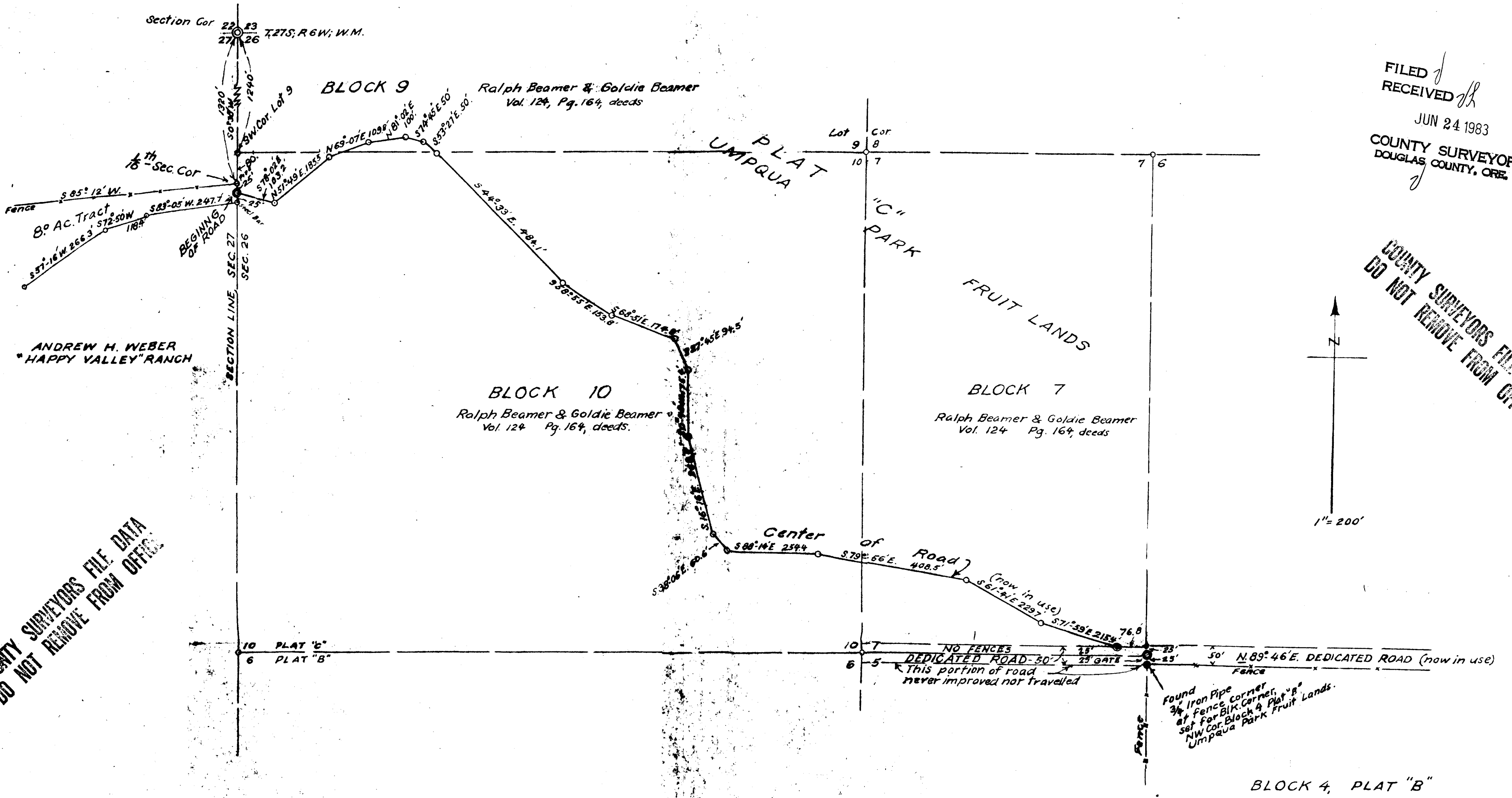
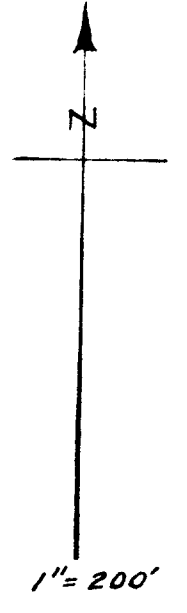


FILED
RECEIVED
JUN 24 1983
COUNTY SURVEYOR
DOUGLAS COUNTY, ORE.

COUNTY SURVEYORS FILE DATA
DO NOT REMOVE FROM OFFICE



COUNTY SURVEYORS FILE DATA
DO NOT REMOVE FROM OFFICE

COUNTY SURVEYORS FILE DATA
DO NOT REMOVE FROM OFFICE

Copies Rec'd FROM R. WARE FROM
A Copy He Rec'd FROM PACIFIC NW
BELL. J.H.

ROAD ALIGNMENT
THROUGH BLOCKS 7, 9 & 10,
PLAT "C,"
UMPQUA PARK FRUIT LANDS.
IN SEC. 26, T.27S; R. 6 W, W.M;
DOUGLAS COUNTY, OREGON.
AUG 1954 A.B. 1" = 200'

N. Line should be approximately here

COUNTY SURVEYORS FILE DATA
DO NOT REMOVE FROM OFFICE

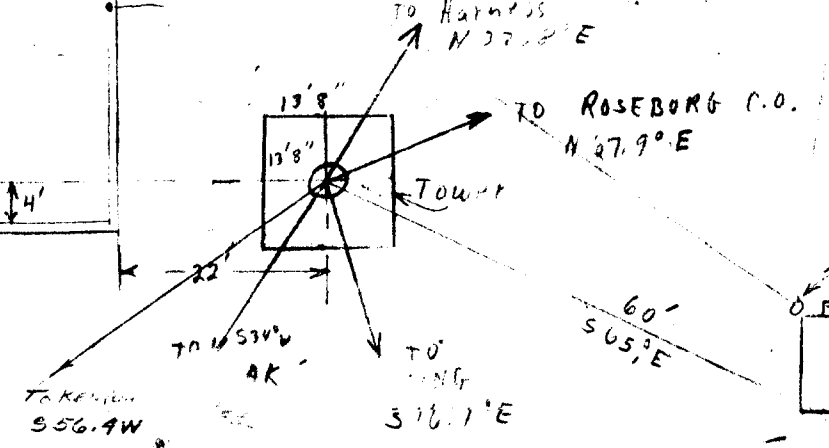
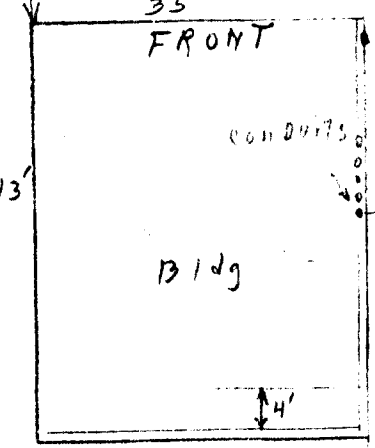
1320' to NE Cor. Sec. 27

FILED
RECEIVED
JUL
COUNTY
DOUGLAS

500 GH
100 CR
100 SALV

COUNTY SURVEYORS FILE DATA
DO NOT REMOVE FROM OFFICE

Parking Lot



COUNTY SURVEYORS FILE DATA
DO NOT REMOVE FROM OFFICE

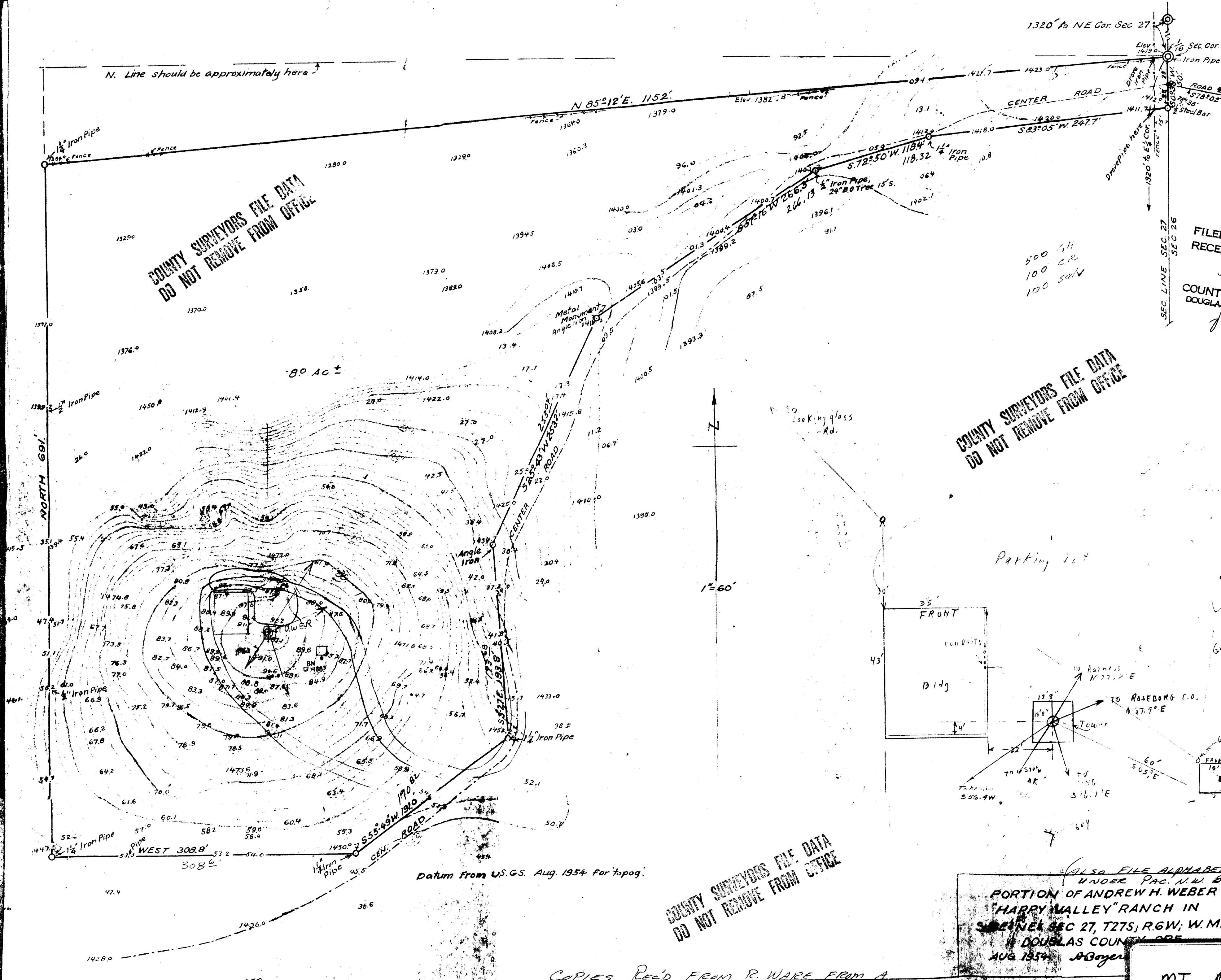
ALSO FILE ALPHABETICALLY
UNDER PAC. N.W. BE
PORTION OF ANDREW H. WEBER
"HARRY VALLEY" RANCH IN
SECTION 27, T27S, R.6W; W.M.,
DOUGLAS COUNTY, ORE.
AUG 1854 ABayer

COPIES REC'D FROM R. WARE FROM A
COPY HE REC'D FROM PACIFIC N.W. BELL.
Z.R.

MT NEBO ROSE

MT N

U.S. File No.



Datum From U.S.G.S. Aug. 1954 for topog.