

FILED
RECEIVED *JH*

NARRATIVE OF SURVEY TO CONFORM TO PARAGRAPH 209.250
OREGON REVISED STATUTES

JUN 14 1983

COUNTY SURVEYOR
DOUGLAS COUNTY, ORE.

SURVEY FOR: Boise Cascade Timberlands of Oregon
Post Office Box 100
Medford, OR 97501

CONTRACT: Hog Ranch Survey

LOCATION: Sections 26, 27, 34 and 35, Township 32 South, Range
7 West, Willamette Meridian, Oregon

BASIS OF BEARINGS: Solar Observation

PURPOSE: To establish the property lines between Boise Cascade
Timberlands of Oregon and the Bureau of Land Management.

PROCEDURE: The survey was done by random traverse using a Topcon
GTS-2 Guppy Total Station. Survey work was done by
Ron Quimby, Darrell Jones, Philip Pieske, Jim Artman,
and David Buhl. The office computations were done by
Eugene Bloom. The drafting was done by Debra Hopkins.
Equipment used on the survey included:

Topcon GTS-2 Total Station
Hewlett-Packard 3800 E.D.M.
Wild T-2 01" Theodolite

During the course of this survey, we tied the section corner common to sections 22, 23, 26, and 27, the 1/4 corner common to sections 26 and 27, the standard corner common to sections 34 and 35 on the township line, the section corner common to sections 27, 28, 33, and 34. The 1/4 corner common to sections 27 and 34, and the 1/4 corner common to sections 34 and 35 could not be found. The double proportion location of the section corner common to sections 26, 27, 34 and 35 would not fit the original ridge call to the west, by approximately 100 feet. In the original calls along the north lines common to sections 34 and 35, there appears to be a blunder, as the north line of section 34 is short, and the north line of section 35 is long. The blunder appears to be along the north line of section 35, as topography calls along the north line of section 34 matched well.

We established the location of the section corner common to sections 26, 27, 34 and 35, from the original pine bearing tree, now a stump, which had been previously opened (no scribes were found), by using this stump, two madrona clumps which match record bearing and distance, and by using the ridge call to the west, which matches the original location, and checks with old north-south cutting line as well. From searching the County notes and visiting the section corner common to sections 22, 23, 26, and 27, it appears that the original trees were most likely bark scribed.

The 1/4 corner common to sections 26 and 27 was determined from original bearing trees. The SW. pine is now a 56" (record, 30") pine (swelled butt, measured above swell) which is burned out on the NE. face. The pine to the NE. is now a 30" (record, 14") which shows a face. We opened this tree and found no face inside (this tree was most likely bark scribed). The location of this corner closely matches the mid-point between corners.

REGISTERED
PROFESSIONAL
LAND SURVEYOR

Ronald A. Quimby
OREGON
JULY 14, 1978
RONALD A. QUIMBY
1654

C. E. No. 58/287-1A

FILED
RECEIVED *JH*

JUN 14 1983

COUNTY SURVEYOR
DOUGLAS COUNTY, ORE.

~~FILED *BS*
RECEIVED *BS*~~

Page 2 of 3

~~MAY 3 1983~~

~~COUNTY SURVEYOR
DOUGLAS COUNTY, ORE.~~

The 1/4 corner common to sections 34 and 35 was proportioned in as no trace of the original location could be found. The original bearing trees were madrona.

The 1/4 corner common to sections 27 and 34 was also proportioned, as no evidence could be found.

The location of the section corner common to sections 26, 27, 34, and 35, and the 1/4 corner common to sections 26 and 27 was discussed with the Medford District of the Bureau of Land Management. They agreed with the procedure we used to establish this location, as it was the best evidence available, and fits very old cutting lines that agree with locally accepted corner position.

May 25, 1983

AA Surveying Service, Inc.
P.O. Box 130
Roseburg, OR 97470

Ronald A. Quimby
Registered Land Surveyor
Oregon Certificate No. 1654

REGISTERED
PROFESSIONAL
LAND SURVEYOR

Ronald A. Quimby
OREGON
JULY 14, 1978
RONALD A. QUIMBY
1654

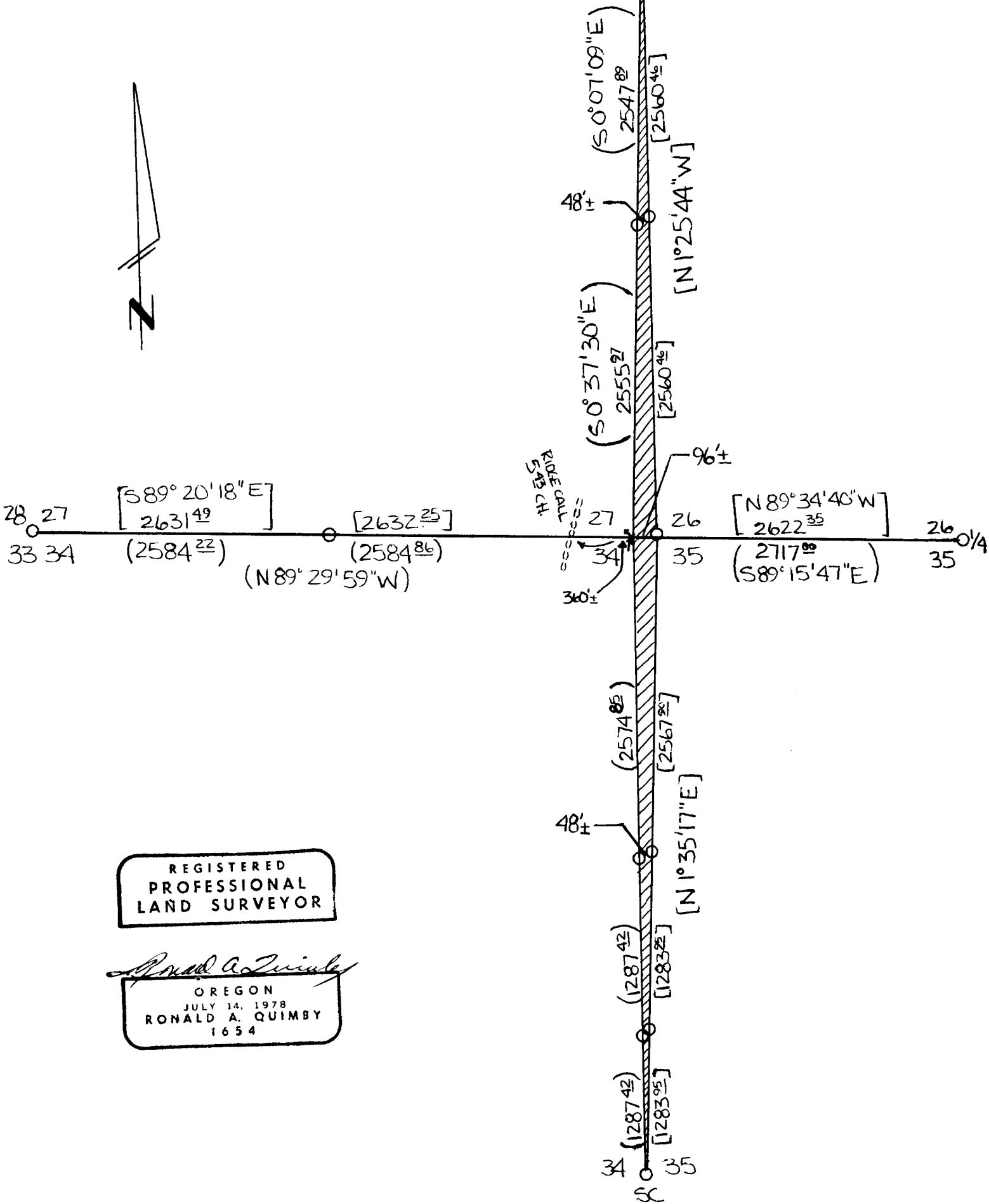
C. S. File No. 58/284 -1b (u)

[By double proportion of sec. cor.]
(By acceptance of cor. information)
///// Area that would have been in trespass if cor. set by double proportion

FILED
RECEIVED *jh*

JUN 14 1983

COUNTY SURVEYOR
DOUGLAS COUNTY, ORE.



REGISTERED
PROFESSIONAL
LAND SURVEYOR

Ronald A. Quimby
OREGON
JULY 14, 1978
RONALD A. QUIMBY
1654

C. L. No. 58/284-10 N