

— Indicates line blazed and posted

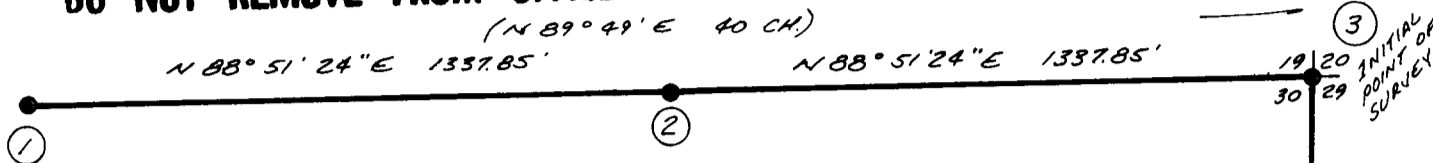
FILED *BS*  
RECEIVED *BS*

MAY 10 1983

**COUNTY SURVEYORS FILE DATA  
DO NOT REMOVE FROM OFFICE**

**COUNTY SURVEYOR  
DOUGLAS COUNTY, ORE.**

JOB NO. 583-09



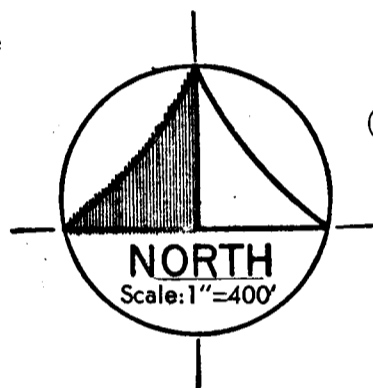
- ① 1/4 - S19, S30, T21S, R9W  
Set 1 1/4" X 36" I.P. with 2 1/2" Brass Cap marked as above  
Found Fir Stump S18°E 16.5 Ft. ("B.T." visible)  
Found Stump Hole N42°E 9.9 Ft.  
Scribed 6" Fir N24°E 11.2 Ft.  
Scribed 7" Hemlock S9°E 8.5 Ft.

- ② E 1/16, S19, S30, T21S, R9W  
Set 1 1/4" X 36" I.P. with 2 1/2" Brass Cap marked as above  
Scribed 36" Cedar N8°W 15.5 Ft.  
Scribed 12" Hemlock S76°E 38.0 Ft.

- ③ SECTION CORNER - S19, S20, S29, S30  
Found Brass Cap and accessories of record

- ④ N 1/16, S29, S30, T21S, R9W  
Set 1 1/4" X 36" I.P. with 2 1/2" Brass Cap marked as above  
Scribed 6" Fir N13°W 12.1 Ft.  
Scribed 8" Fir N56°E 13.4 Ft.

- ⑤ 1/4 - S29, S30, T21S, R9W  
Set 1 1/4" X 36" I.P. with 2 1/2" Brass Cap marked as above  
Found Fir Stump S41°W (S41°E) 9.9 Ft. ("1/4 S BT" visible on NE Face)  
Found Stump Hole N79°E 19.1 Ft.  
Scribed 12" Fir S40°E 13.2 Ft.  
Scribed 6" Hemlock N89°W 8.8 Ft.



1267.80'  
5 0° 36' 20" W  
1267.80' (NORTH 40 CH.)

This survey was conducted to locate and mark the lines defining International Paper Co. ownership along a portion of the North and East lines of Section 30. All controlling corners were found as shown and the 1/16 corners were established in the prescribed manner. Bearings are based on solar observation. All distances to bearing trees were measured to the side and center of the tree at the root crown. All bearings to accessories are magnetic; mean magnetic variation is 19° 30' East. All Brass Caps set are marked PLS 1093, 1983.

<b>PLANTS &amp; ASSOCIATES</b> PROFESSIONAL ENGINEERS & LAND SURVEYORS 54 CENTENNIAL LOOP, EUGENE, OREGON (503) 686-9211 510 KINGWOOD STREET, FLORENCE, OREGON (503) 997-8411	
PROJECT	BOUNDARY SURVEY
CLIENT	INTERNATIONAL PAPER CO.
LOCATION	NE 1/4, SECTION 30, T21S, R9W, W.M. DOUGLAS COUNTY, OREGON
DRAWN BY: EMW	MARCH 28, 1983

REGISTERED  
PROFESSIONAL  
LAND SURVEYOR

*Eugene M. Wobbe*

OREGON  
JULY 30, 1976  
EUGENE M. WOBBE  
1093

58281-  
C. S. File No.

JOB NO.