

M 96-20

FILED
RECEIVED *BS*

OREGON CORNER RESTORATION FORM

MAR 22 1984

Section 26 Township 20S Range 9W

COUNTY SURVEYOR
DOUGLAS COUNTY, ORE.

County Douglas Date 3-02-84

Corner Designation

C.S. 1/16
Corner
Section 26

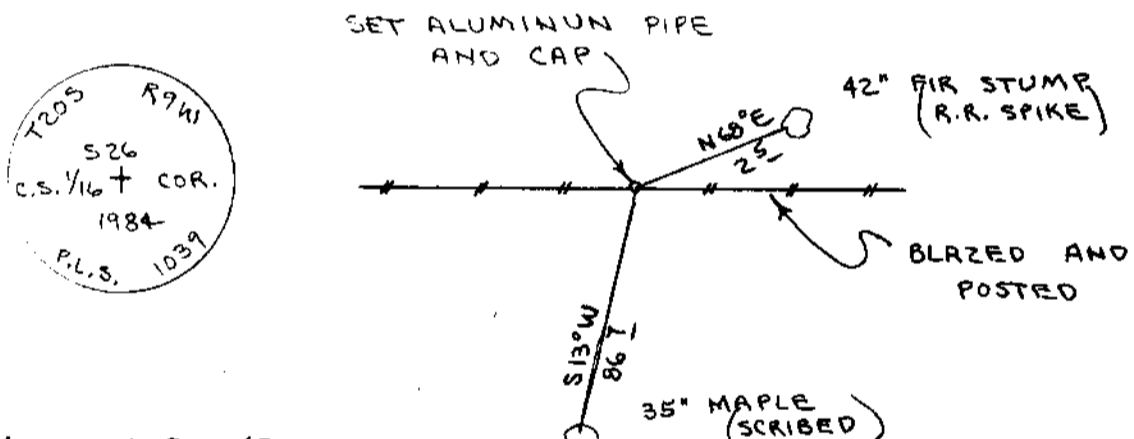
- Condition Report Only
- Not Found
- Renewed
- Unrecorded
- Surveyed In
- Referenced Out

Previous Renewals/Surveys, etc. None

Monument(s) & Accessories Found: (Condition and Source)

Monument Detail

Sketch



Monument Set (Procedures and Description)

Set 2" x 36" Aluminum pipe and cap. Cap stamped S-T-R, date and P.L.S. No. 1039. Buried purple magnetic marker under 36" pipe. See filed survey for survey procedures.

New Accessories

35" Maple, S13W, 86.7' (Scribed/Painted Red/Brass Washers)
Set R.R. Spike in side of 42" Fir Stump. N68E, 2.5' to spike.
Set metal fence post, with land survey monument sign wired to, beside aluminum pipe.

Location & Comments

Corner lies on East slope in old logging unit. Logging about 12-15 years old.

Compass Declination 20 $\frac{1}{2}$
 Firm/Agency Roberts Surveying Inc.
 Address 29 West 29th St. Eugene, Oregon 97405
 Party Chief Ted Baker
 Notes Stu Duce
 Witness Buzz Moisan

Surveyor's Seal



C.S. File No. 58/200-71