

M 96-20

FILED
RECEIVED *BS*

OREGON CORNER RESTORATION FORM

MAR 22 1984

Section 25 Township 20S Range 9W

COUNTY SURVEYOR
DOUGLAS COUNTY, ORE.

County Douglas Date 3-01-84

Corner Designation

West 1/16
Corner

26

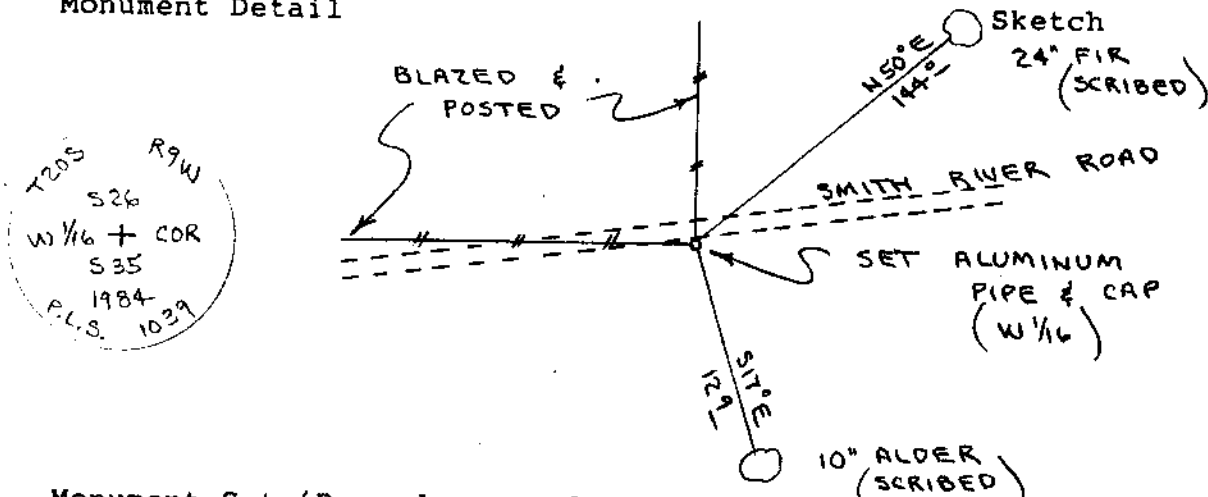
35

- Condition Report Only
- Not Found
- Renewed
- Unrecorded
- Surveyed In
- Referenced Out

Previous Renewals/Surveys, etc. None

Monument(s) & Accessories Found: (Condition and Source)

Monument Detail



Monument Set (Procedures and Description)

Set 2" x 36" Aluminum pipe and cap. Buried purple magnetic marker under 36" pipe. See filed survey for survey procedures.

New Accessories

- 10" Alder, S17E, 12.9' (Barked Scribed/Painted Red/Brass Washer)
- 24" Fir, N50E, 144.0' (Scribed/Painted Red/Brass Washer)
- Set metal fence post with land survey monument sign wired to, beside aluminum pipe.

Location & Comments

Corner lies on South- Compass Declination 20 1/2
erly gravel shoulder Firm/Agency Roberts
of Smith River Access Surveying Inc.
Road. Address 29 West 29th St.
Eugene, Oregon 97405
Party Chief Ted Baker
Notes Stu Duce
Witness Buzz Moisan

Surveyor's Seal

REGISTERED
PROFESSIONAL
LAND SURVEYOR

L. D. Roberts

OREGON
AUGUST 22, 1975
L. D. ROBERTS
1039

C.S. File No. 53/280 ¹⁸ _(u)