

M 90-52

FILED  
RECEIVED *BS*

MAR 22 1984

OREGON CORNER RESTORATION FORM

Section 22 Township 22S Range 9W

COUNTY SURVEYOR  
DOUGLAS COUNTY, ORE.

County Douglas Date 9-19-83

Corner Designation

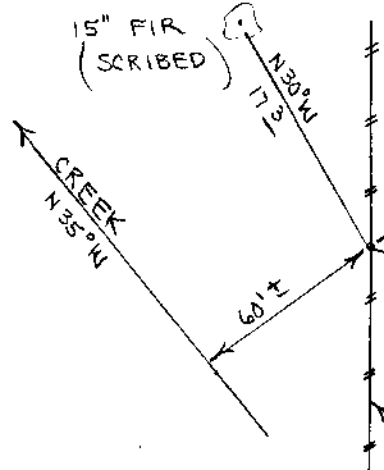
C.E. 1/16 Corner  
Section 22

- Condition Report Only
- Not Found
- Renewed
- Unrecorded
- Surveyed In
- Referenced Out

Previous Renewals/Surveys, etc. None

Monument(s) & Accessories Found: (Condition and Source)

Monument Detail



Sketch

SET 1/2" X 36" IRON PIPE AND BRASS CAP

9" FIR (SCRIBED)

BLAZED & POSTED

Monument Set (Procedures and Description)

Set 1/2" x 36" Iron Pipe and Brass Cap. Cap stamped S-T-R, date and P.L.S. No. 1039. No orange magnetic marker buried under 36" pipe. See filed survey for survey procedures.

New Accessories

- 9" Fir, S73E, 44.7' (Scribed/Painted/Brass Washer)
- 15" Fir, N30W, 17.3' (Scribed/Painted/Brass Washer)

Location & Comments

Corner lies on gentle North slope about 60' Northeastly of creek.

Compass Declination 20 1/2

Firm/Agency Roberts Surveying Inc.

Address 29 West 29th St. Eugene, Oregon 97405

Party Chief Ted Baker

Notes Stu Duce

Witness \_\_\_\_\_

Surveyor's Seal

