

M 96-24

FILED  
RECEIVED *BS*

OREGON CORNER RESTORATION FORM

MAR 28 1984

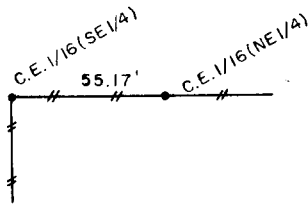
Section 21 Township 22S Range 9W

COUNTY SURVEYOR  
DOUGLAS COUNTY, ORE.

County Douglas Date 10-12-83

Corner Designation

C.E. 1/16 Corner  
For SE $\frac{1}{4}$  Only  
Section 21



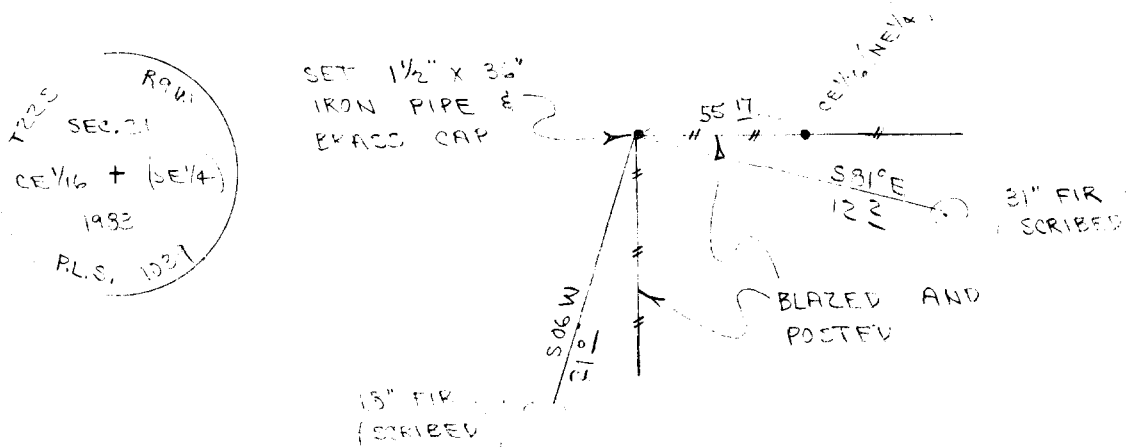
- Condition Report Only
- Not Found
- Renewed
- Unrecorded
- Surveyed In
- Referenced Out

Previous Renewals/Surveys, etc. None

Monument(s) & Accessories Found: (Condition and Source)

Monument Detail

Sketch



Monument Set (Procedures and Description)

Set 1 1/2" x 36" Iron Pipe and Brass Cap. Cap stamped S-T-R, date and P.L.S. No. 1039. Buried orange magnetic marker under 36" pipe. See filed survey for survey procedures.

New Accessories

- 18" Fir, S06W, 21.0' (Scribed/Painted/Brass Washer)
- 31" Fir, S81E, 12.2' (Scribed/Painted/Brass Washer)

Location & Comments

Corner lies on S.E. slope in stand of heavy green timber

Compass Declination 20 1/2  
 Firm/Agency Roberts Surveying Inc.  
 Address 29 West 29th St. Eugene, Oregon 97405  
 Party Chief Ted Baker  
 Notes Stu Duce  
 Witness \_\_\_\_\_

Surveyor's Seal

*Les Roberts*

C.S. File No. 58/280 (u)