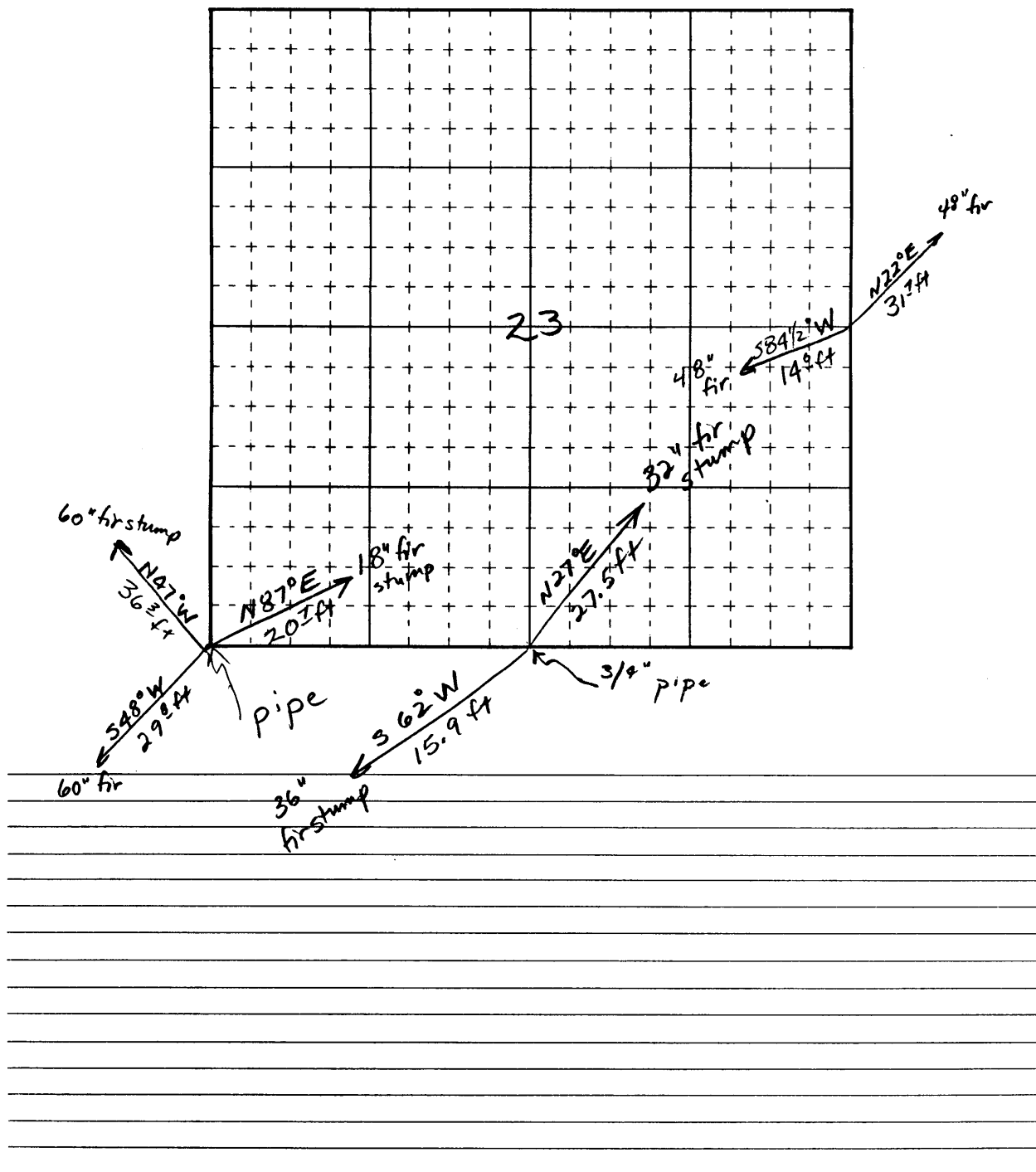




Weyerhaeuser Company

Section 23 Township 27 S. Range 8 W.



G. S. Ellis No. 58/27/1-7

The attached corners were visited by Douglas County crews with insufficient evidence available for re-monumenting the corners. Weyerhaeuser information was not based on "found" original evidence and the County crew disagreed with many of Weyerhaeuser's bearings and distances to their set monument.

July, 1983

V. Laugen

C.S. 58/271

CS 58/271 S thru 15